

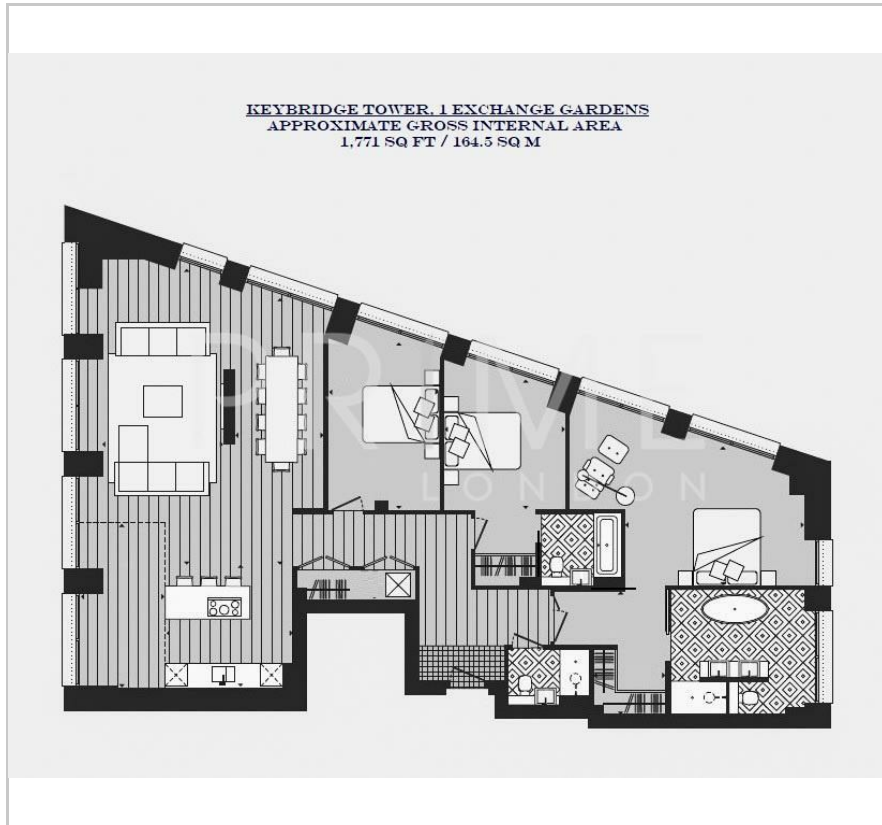
## Keybridge Tower

1 Exchange Gardens, Vauxhall, SW8 1BN

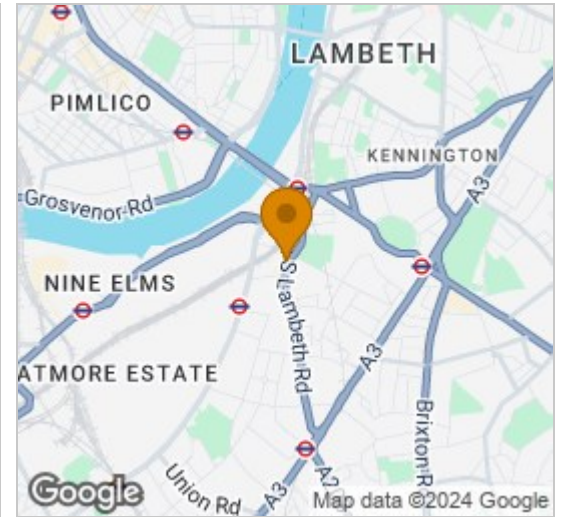
Asking Price £1,795,000



## Floor Plan



## Area Map



## Energy Efficiency Graph



## Viewing

By appointment. Contact us on 0207 928 6663 if you wish to arrange a viewing appointment for this property, or require further information.

- Warehouse style three bedroom apartment
- Chain free and EWS1
- Gym, pool, spa, sauna and steam room
- Next to the new Nine Elms Northern Line tube station
- 24-hour concierge service and residents' Club Lounge

This impressive warehouse style three bedroom apartment, set on a higher floor within the highly desirable Keybridge development, is available for chain free sale through Prime London. The property also comes with a secure parking space.

The property is an excellent size at 1,771 sq ft (164.5 sq m) and is located in the UK's tallest brick tower, which is also surrounded by 1 acre of landscaped open space. Comprising of a dual aspect open plan reception room, smart integrated kitchen, three large double bedrooms with great storage, and three luxury bathrooms (two en suite, and one with free standing bath overlooking the city). The apartment is well designed to be lived in and enjoyed.

Residents of Keybridge benefit from a 24 hour concierge service, 15 metre swimming pool, a club lounge and communal gardens, all within walking distance of Zone 1 transport links.



These particulars, whilst believed to be accurate are set out as a general outline only for guidance and do not constitute any part of an offer or contract. Intending purchasers should not rely on them as statements of representation of fact, but must satisfy themselves by inspection or otherwise as to their accuracy. No person in this firm's employment has the authority to make or give any representation or warranty in respect of the property.