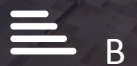


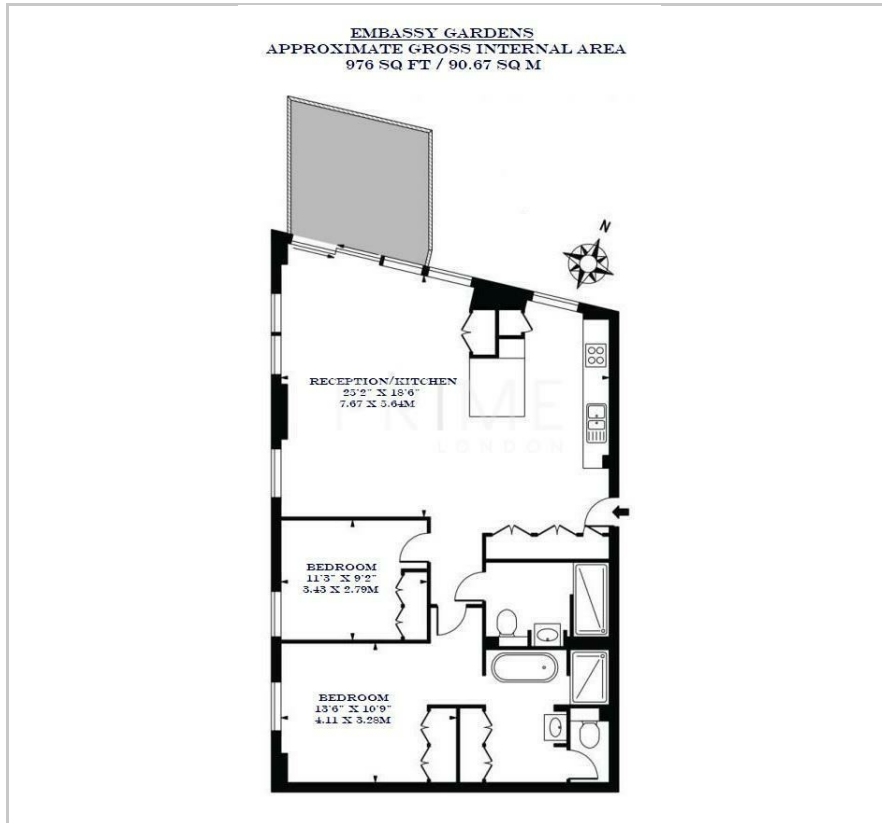
## Capital Building

Embassy Gardens, SW11 7AR

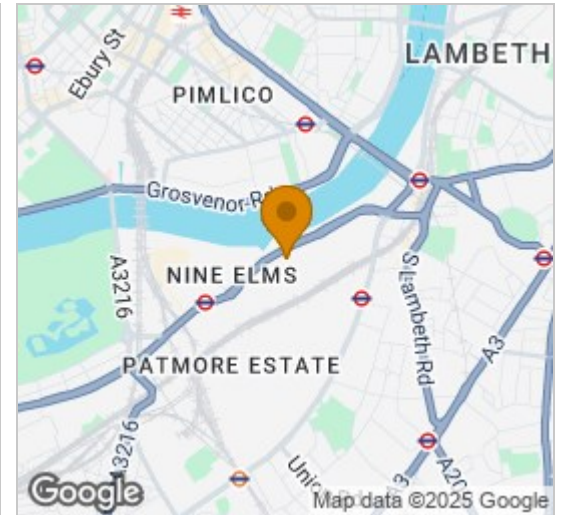
£1,175,000



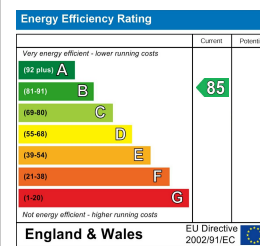
## Floor Plan



## Area Map



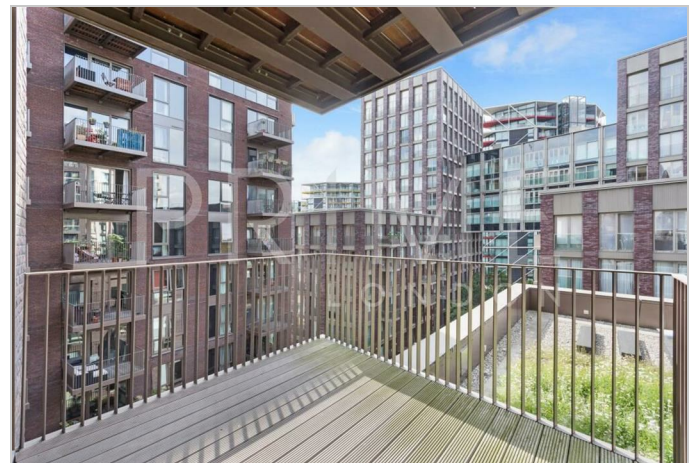
## Energy Efficiency Graph



## Viewing

By appointment. Contact us on 0207 928 6663 if you wish to arrange a viewing appointment for this property, or require further information.

- Two bedroom two bathroom ■ 976 sq ft / 90.67 sq m apartment
- Private balcony ■ Swimming pool, gym, sauna, cinema & lounge
- Chain free ■ 24 hr concierge service



This well-positioned contemporary two bedroom two bathroom apartment, set within the sought after Capital Building, Embassy Gardens, is available for chain free sale through Prime London.

The apartment an excellent living space at 976 sq ft / 90.67 sq m, and comprises an open plan kitchen and living area, two bedrooms with ample built in storage, a main bathroom, ensuite bathroom and floor to ceiling windows.

Designed to the highest specification, the apartment boasts comfort cooling and abundant natural light reminiscent of a Manhattan loft apartment.

Located on the banks of the Thames and near London's cultural South bank, residents not only enjoy a wealth of the Capital's finest attractions and amenities practically on their doorstep but also premium residents facilities including an exclusive private club and health spa.



These particulars, whilst believed to be accurate are set out as a general outline only for guidance and do not constitute any part of an offer or contract. Intending purchasers should not rely on them as statements of representation of fact, but must satisfy themselves by inspection or otherwise as to their accuracy. No person in this firm's employment has the authority to make or give any representation or warranty in respect of the property.