



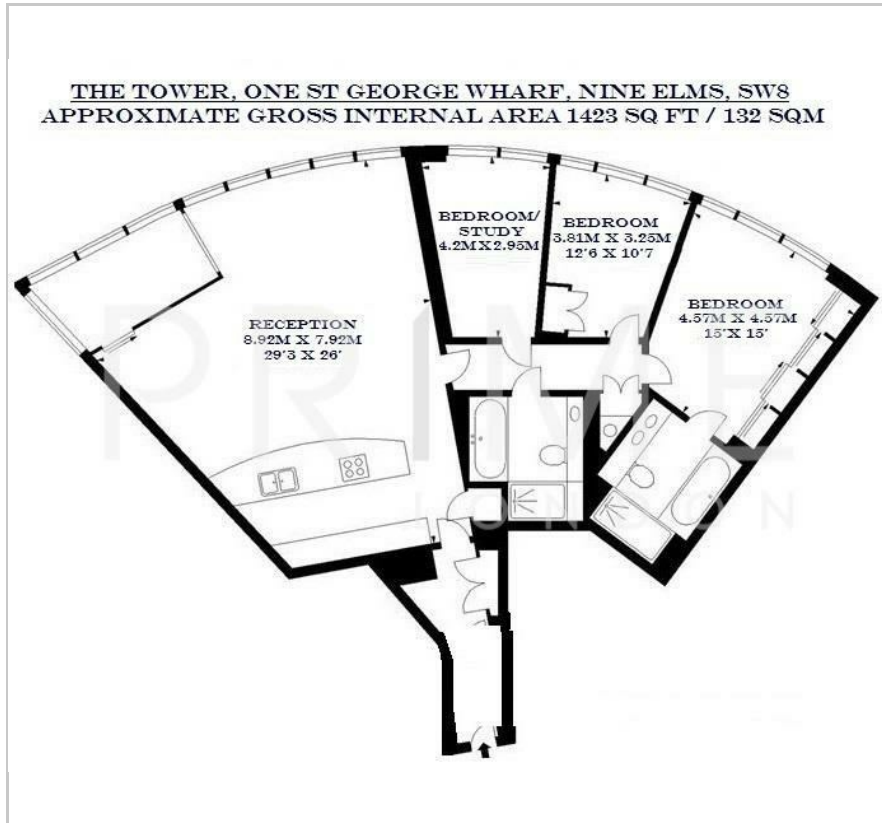
The Tower

One St George Wharf, SW8 2DU

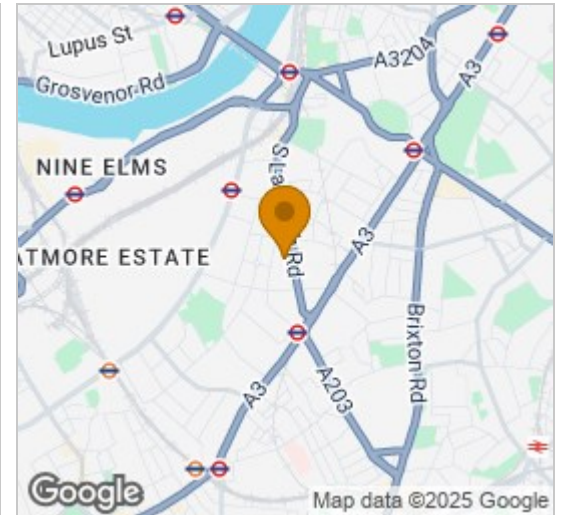
Asking Price £1,999,950



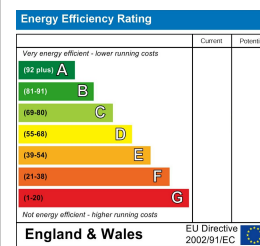
Floor Plan



Area Map



Energy Efficiency Graph

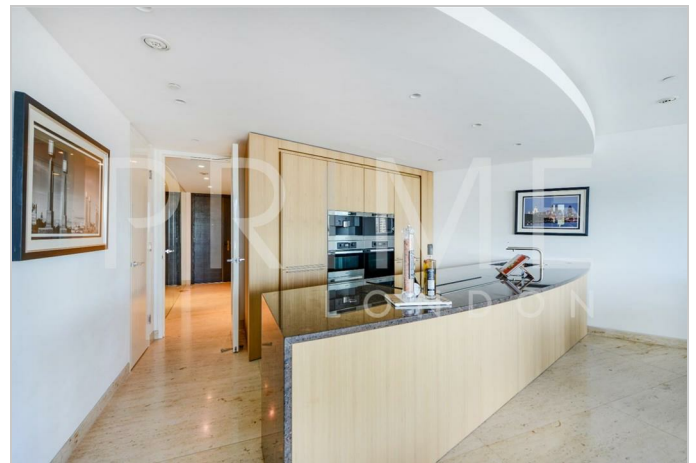


Viewing

By appointment. Contact us on 0207 928 6663 if you wish to arrange a viewing appointment for this property, or require further information.

- Beautifully designed
- 1,423 sq ft (132 sqm)
- High specification bathrooms with exquisite tiling
- Automated controls
- 24 hour concierge
- Directly over the river
- Fully integrated kitchen with Miele appliances
- Comfort cooling
- Valet parking
- Full Leisure suite

A beautifully designed apartment, directly over the river and with views to Westminster, totalling 1,423 sq ft (132 sqm), available for sale through Prime London. The apartment offers a fully integrated kitchen with Miele appliances, high specification bathrooms with exquisite tiling and fittings, comfort cooling, touch panel controls, recessed lighting and automated winter garden. The property is offered with a brand new inventory of furnishings, soft furnishings, linen and kitchenware. This exclusive development offers a valet parking service, and also a dedicated door service, 24 hour concierge, private health club with gym, infinity hydro pool, sauna and steam room, business facilities including a boardroom with conference facility, a business lounge and a private screening room and landscaped exterior gardens.



These particulars, whilst believed to be accurate are set out as a general outline only for guidance and do not constitute any part of an offer or contract. Intending purchasers should not rely on them as statements of representation of fact, but must satisfy themselves by inspection or otherwise as to their accuracy. No person in this firm's employment has the authority to make or give any representation or warranty in respect of the property.