



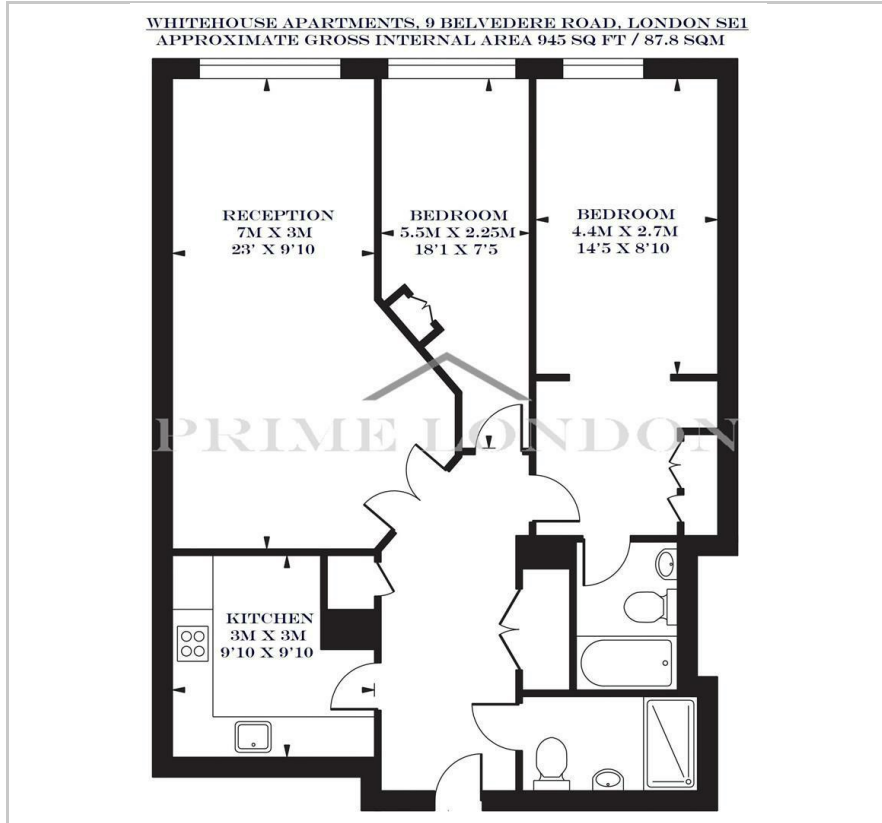
## Whitehouse Apartments

9 Belvedere Road, South Bank, SE1 8YT

Best Offers Over £865,000



## Floor Plan



## Area Map



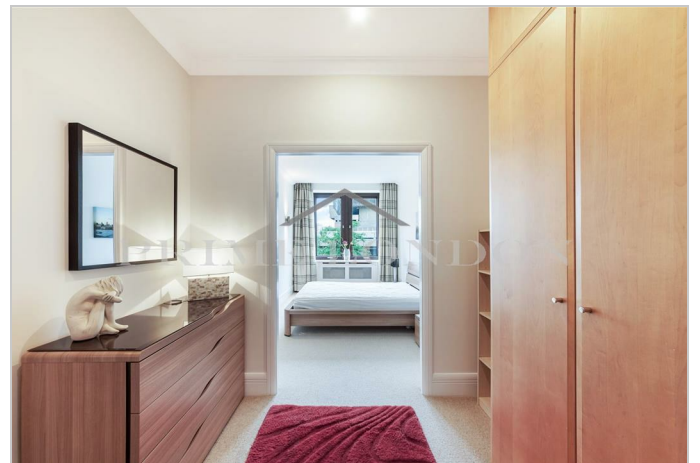
## Energy Efficiency Graph



## Viewing

By appointment. Contact us on 0207 928 6663 if you wish to arrange a viewing appointment for this property, or require further information.

- 945 sq ft
- Pool, Gym and Health Spa
- Secure Underground Parking
- Turnkey home
- 24 Hour Concierge
- Communal Roof Garden



With 945 sq ft of space, this turnkey home in Whitehouse Apartments perfectly suits those seeking an excellently placed executive apartment, and is available chain free exclusively through Prime London.

This property offers a spacious reception room, fully fitted kitchen, two bedrooms (master with en suite and dressing area), and separate shower room.

Additionally, residents enjoy exclusive access to the spa and fitness centre complete with fully equipped gymnasium, heated swimming pool, steam room and sauna.

The Whitehouse Apartments further features a 24 hour concierge service and communal roof terrace. Positioned moments from the South Bank, the location offers an array of some of London's finest cultural attractions, restaurants, cafes and shops.

Nearby Waterloo station provides superb transport links via the Bakerloo, Jubilee, Northern and Waterloo & City lines.



These particulars, whilst believed to be accurate are set out as a general outline only for guidance and do not constitute any part of an offer or contract. Intending purchasers should not rely on them as statements of representation of fact, but must satisfy themselves by inspection or otherwise as to their accuracy. No person in this firm's employment has the authority to make or give any representation or warranty in respect of the property.