



The Corniche

23 Albert Embankment, SE1 7GG

Asking Price £2,750,000



3



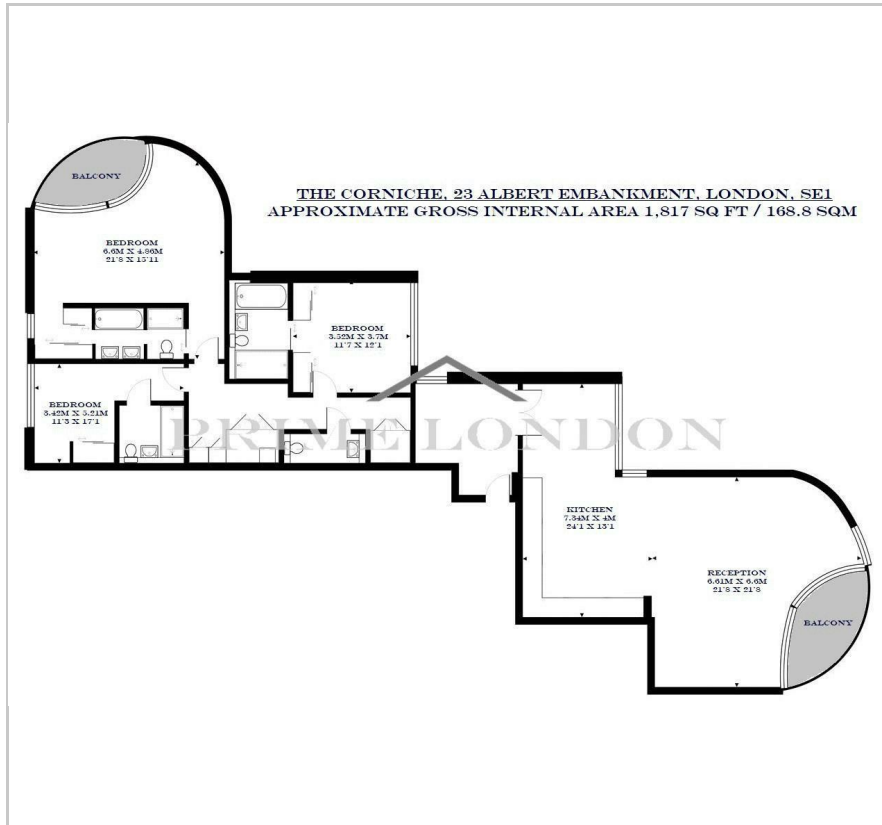
3



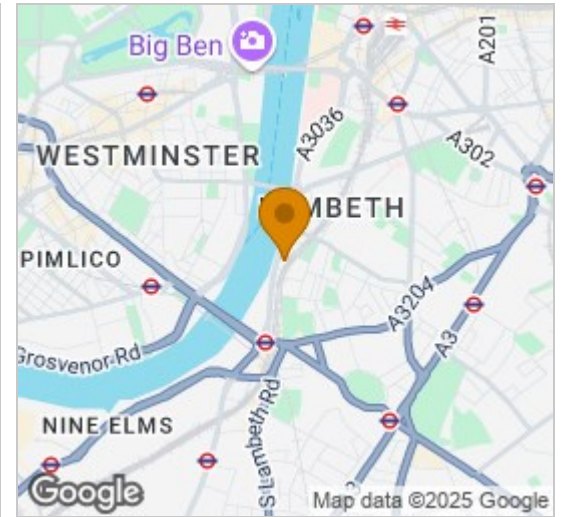
1



Floor Plan



Area Map



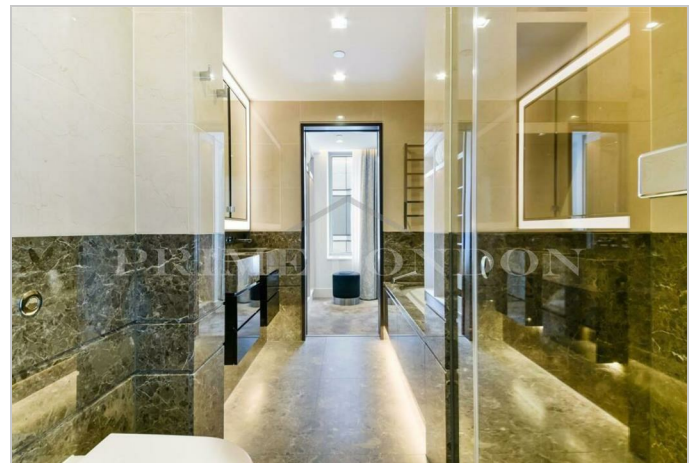
Energy Efficiency Graph



Viewing

By appointment. Contact us on 0207 928 6663 if you wish to arrange a viewing appointment for this property, or require further information.

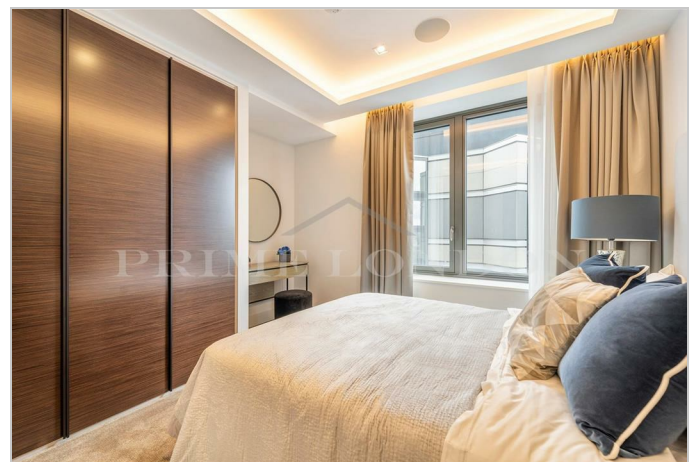
- Interior designed
- Chain free
- Gym, Spa, Pool and Cinema
- 1,817 sq ft (168.8 sqm)
- Extensive residents' facilities
- Residents' club lounge



This interior-designed apartment in The Corniche, totalling some 1,817 sq ft (168.8 sqm) of lateral space and with three aspects capturing some of London's most exquisite views, is available chain free exclusively through Prime London.

Located in an enviable position on the bank of the River Thames, The Corniche includes extensive residents' facilities including a Gym, Spa, Pool and Cinema.

The development also features a residents' club, offering views from the nineteenth floor of the Houses of Parliament and the River Thames, the Tate Britain, London Eye and the City beyond.



These particulars, whilst believed to be accurate are set out as a general outline only for guidance and do not constitute any part of an offer or contract. Intending purchasers should not rely on them as statements of representation of fact, but must satisfy themselves by inspection or otherwise as to their accuracy. No person in this firm's employment has the authority to make or give any representation or warranty in respect of the property.