



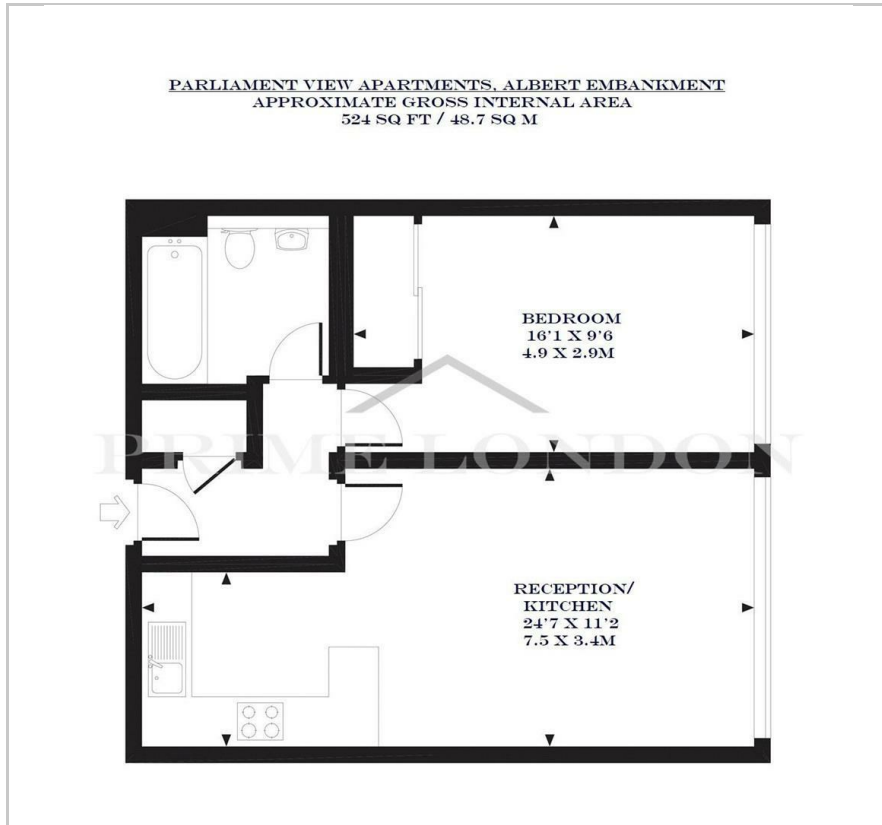
Parliament View Apartments

1 Albert Embankment, SE1 7XN

Asking Price £699,000



Floor Plan



Area Map



Energy Efficiency Graph



Viewing

By appointment. Contact us on 0207 928 6663 if you wish to arrange a viewing appointment for this property, or require further information.

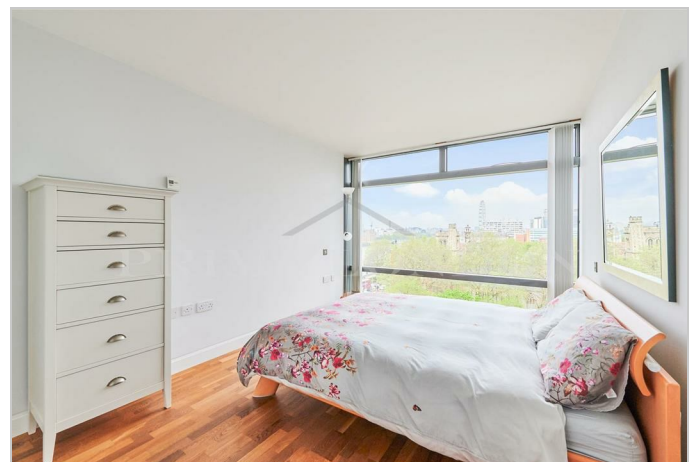
- Modern one bedroom apartment
- 524 sq ft / 48.7 sq m
- Iconic views of the River Thames and Houses of Parliament
- Larger than average parking space
- Fully upgraded apartment
- Residents' gymnasium
- Located next to The River Thames
- 24 hour concierge service

Rare property - Set in the best position within the development, this fully refurbished one bedroom apartment with iconic views of the Houses of Parliament and River Thames, totalling 524 sq ft (48.7 sqm), is available for chain free sale through Prime London.

The property also comes with a larger than the average parking area. The apartment comprises a bright reception with floor to ceiling windows and unparalleled views, an upgraded open plan kitchen with breakfast bar, a spacious bedroom with built in storage, separate modern family bathroom, wooden flooring, and air cooling.

Parliament View itself offers a 24 hour concierge service, residents' gymnasium and an excellent location on the river between Lambeth and Vauxhall Bridge.

As a result the development is within easy reach of the West End, Westminster, the City and South Bank. Vauxhall rail and underground station.



These particulars, whilst believed to be accurate are set out as a general outline only for guidance and do not constitute any part of an offer or contract. Intending purchasers should not rely on them as statements of representation of fact, but must satisfy themselves by inspection or otherwise as to their accuracy. No person in this firm's employment has the authority to make or give any representation or warranty in respect of the property.