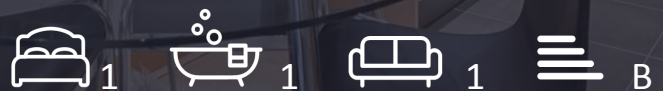




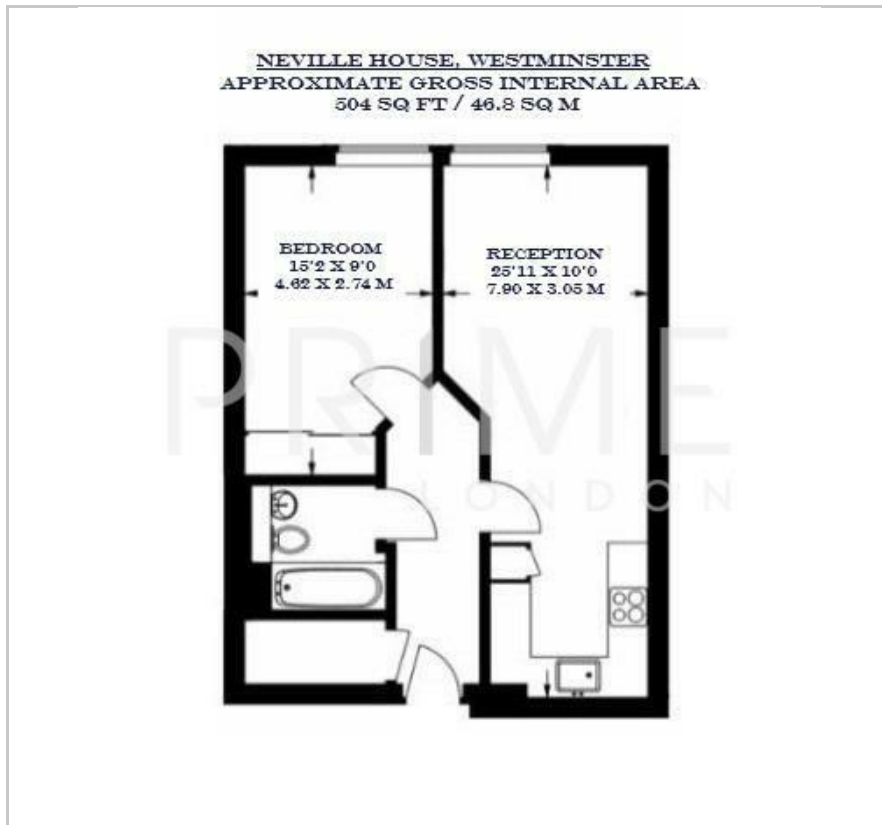
## Neville House

19 Page Street, Westminster, SW1P 4JX

£620 Per Week



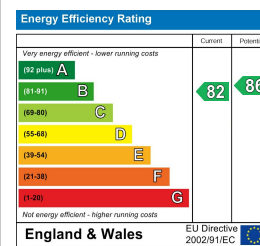
## Floor Plan



## Area Map



## Energy Efficiency Graph



## Viewing

By appointment. Contact us on 0207 052 1075 if you wish to arrange a viewing appointment for this property, or require further information.

- Modern apartment
- 504 sq ft (46.8 sq m)
- Overlooking a garden square
- Located in the heart of Westminster
- Local parks include Green Park and St James's Park
- 24 hour concierge

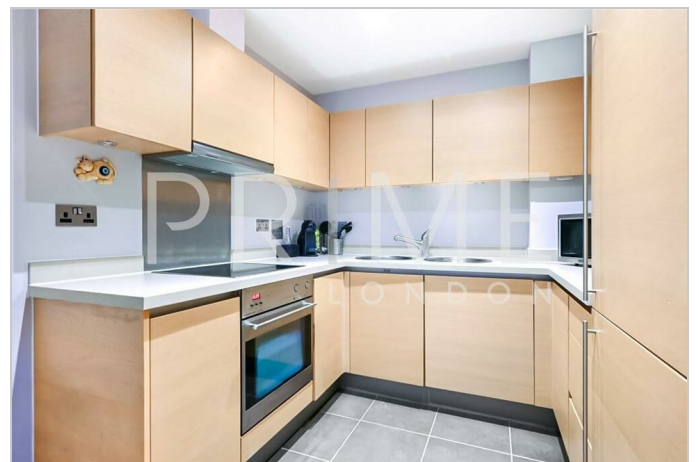
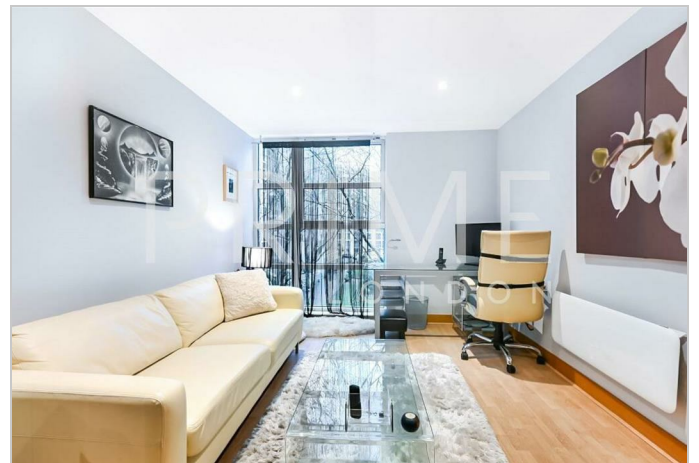
Available 20th January.

This fully furnished 504 sq ft (46.8 sq m) one-bedroom apartment, situated within Neville House, is available for lease through Prime London.

This contemporary apartment, overlooking the gardens of St. John's Square, comprises an open-plan reception room/kitchen, and a recently redecorated bedroom with built-in storage. Neville House is an elegant purpose-built development located in the heart of Westminster, to the south of St James Park and east of Victoria.

The area includes some of London's most iconic landmarks and yet retains a surprisingly village-like atmosphere. Furthermore, residents of Neville House benefit from a 24 hour concierge service.

Transport links are convenient, with the Jubilee Line (Westminster) and Circle & District Lines (St James Park), both approximately 0.5 miles away.



These particulars, whilst believed to be accurate are set out as a general outline only for guidance and do not constitute any part of an offer or contract. Intending purchasers should not rely on them as statements of representation of fact, but must satisfy themselves by inspection or otherwise as to their accuracy. No person in this firm's employment has the authority to make or give any representation or warranty in respect of the property.