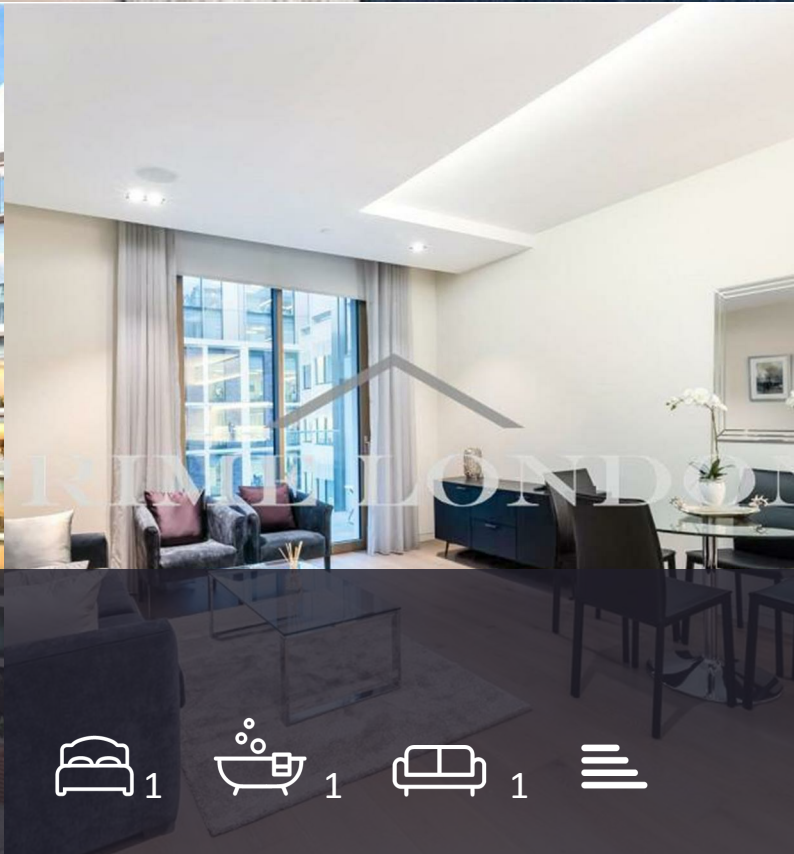




3 Pearson Square

Fitzroy Place, W1T 3BG

£700 Per Week



1



1

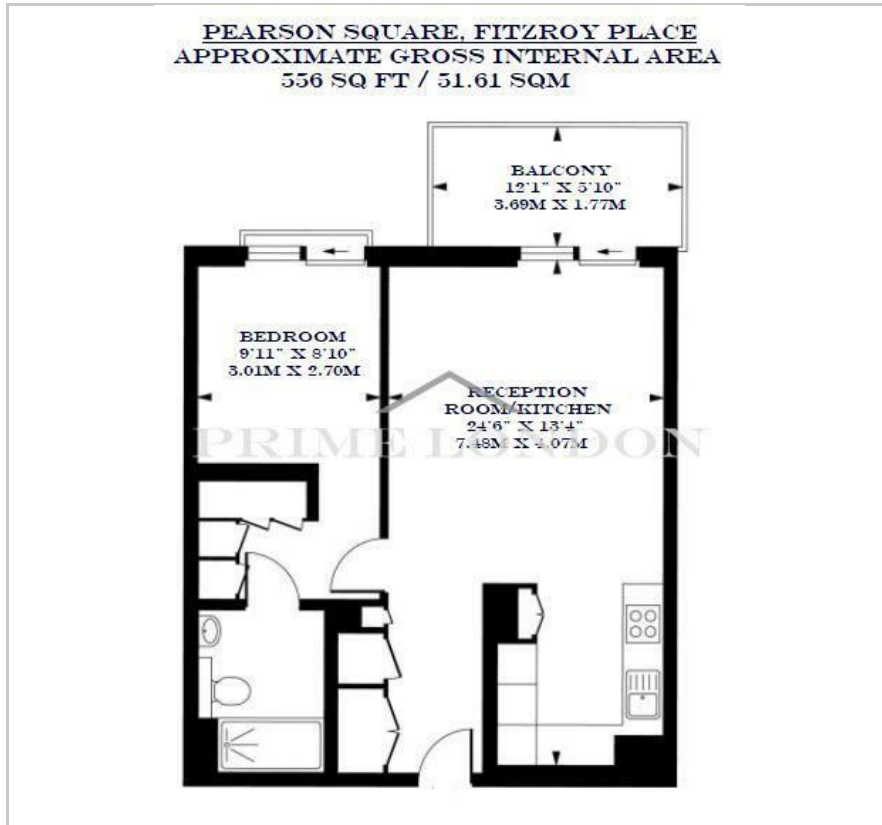


1





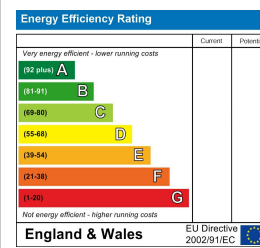
## Floor Plan



## Area Map



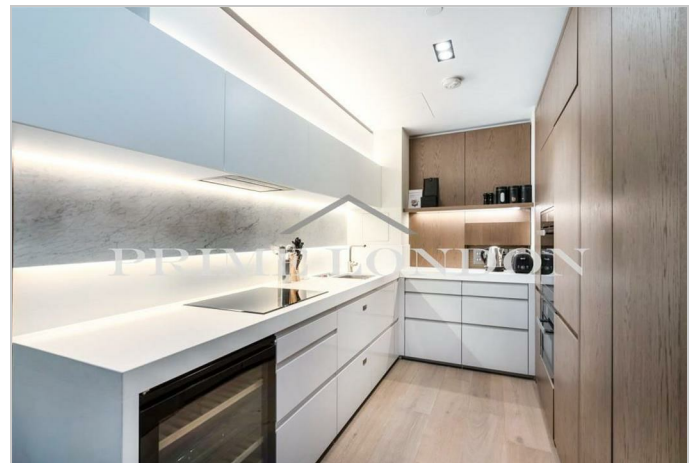
## Energy Efficiency Graph



## Viewing

By appointment. Contact us on 0207 052 1075 if you wish to arrange a viewing appointment for this property, or require further information.

- One bedroom apartment
- Fully furnished
- Private cinema, gym, executive lounge
- 556 sq ft (51.61 sq m)
- Private balcony
- 24 hour concierge services



An exceptional high specification 556 sq ft (51.61 sqm) fully furnished one bedroom apartment available for lease through Prime London within this landmark development in the heart of Fitzrovia.

Fitzroy Place residents enjoy membership of The Fitzroy Club which includes access to the club room, private cinema, gym, executive lounge and 24 hour concierge service.

Located in the heart of Fitzrovia, the development is perfectly placed for the boutique shops and restaurants of Marylebone to the West and Mayfair to the south, the green open spaces of Regent's Park to the north as well as being within each reach of the City to the east.

Transport links include Godege Street (Northern line) underground station 0.3miles. Oxford Circus (Bakerloo, Central and Victoria lines) underground station 0.4 miles. Tottenham Court Road underground station (Central and Northern line,) 0.5 miles.



These particulars, whilst believed to be accurate are set out as a general outline only for guidance and do not constitute any part of an offer or contract. Intending purchasers should not rely on them as statements of representation of fact, but must satisfy themselves by inspection or otherwise as to their accuracy. No person in this firm's employment has the authority to make or give any representation or warranty in respect of the property.