

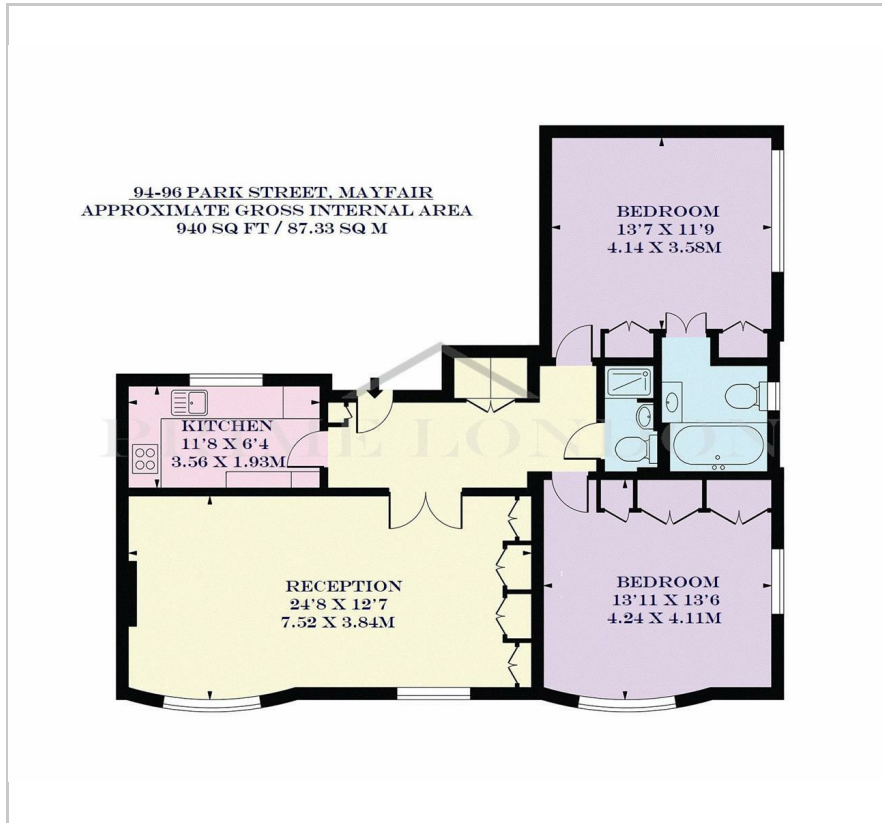
94-96 Park Street

Mayfair, W1K 6NY

£875 Per Week



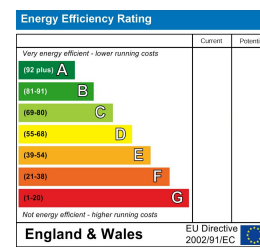
Floor Plan



Area Map



Energy Efficiency Graph



Viewing

Please contact our on 0207 052 1075 if you wish to arrange a viewing appointment for this property or require further information.

- Beautiful 2 bed 2 bath ▪ 940 sq ft (87.33 sqm) apartment
- Fully furnished
- Located close to Hyde Park



This beautifully finished and generously proportioned two bedroom two bathroom apartment, situated in a well maintained period block with lift access and coming fully furnished, is available to rent through Prime London.

Located close to Hyde Park and sitting just off the famous Park Lane, this 940 sq ft (87.33 sqm) apartment benefits from a light and spacious reception room and separate modern kitchen, two double bedrooms, one of which features a hidden en-suite bathroom entered via discreet wardrobe doors, and a separate shower room.

The property is located on the quiet and residential Park Street, which runs parallel with the famous Park Lane, offering close proximity to the vast green spaces of Hyde Park.

The world renowned shopping and amenities of Oxford Street and Bond Street are also nearby and the countless food and beverage options of Mayfair, Soho and Marylebone are all within short distances away.

The location is well serviced by numerous stations and lines including Central, Jubilee, Piccadilly and Bakerloo lines.



These particulars, whilst believed to be accurate are set out as a general outline only for guidance and do not constitute any part of an offer or contract. Intending purchasers should not rely on them as statements of representation of fact, but must satisfy themselves by inspection or otherwise as to their accuracy. No person in this firm's employment has the authority to make or give any representation or warranty in respect of the property.