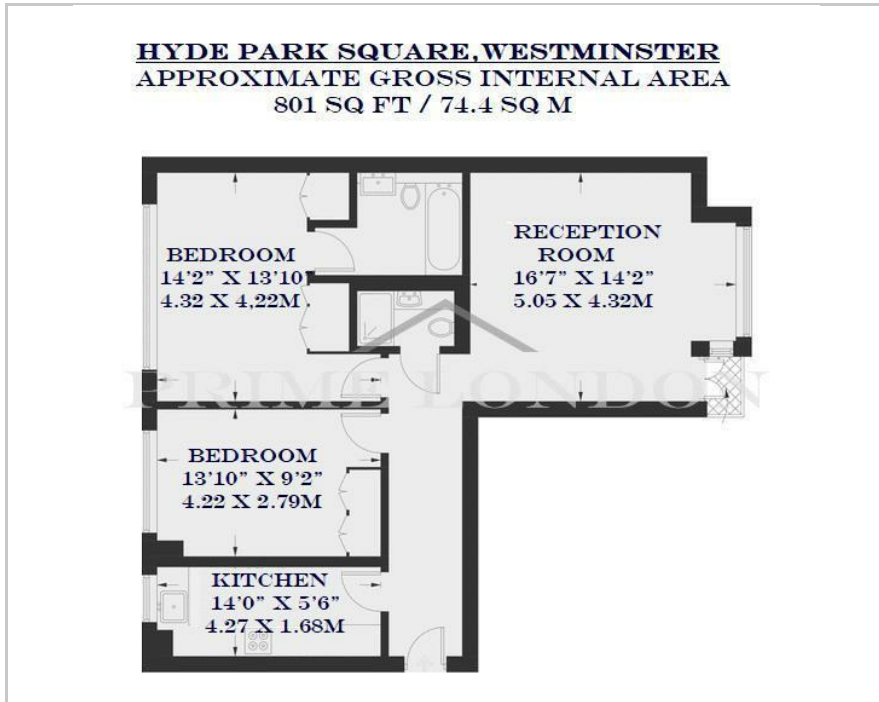




1 Hyde Park Square, Marble Arch, W2 2JZ
Asking Price £1,350,000

Floor Plan



Area Map

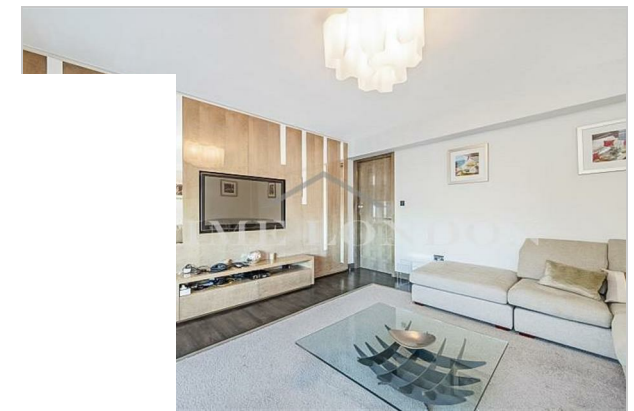


These particulars, whilst believed to be accurate are set out as a general outline only for guidance and do not constitute any part of an offer or contract. No person in this firm's employment has the authority to make or give any representation or warranty in respect of the property.

21 Grosvenor Gardens, Belgravia, London SW1W 0BP | Palace View, 131 Lambeth Road, London SE1 7BT
 Tel: 0207 052 1075 | 0207 928 6663 Email: Office@PrimeLondonResidential.com www.PrimeLondonResident

Accommodation

- Two bedroom two bathroom
- 801 sq ft / 74.4 sq m
- Private balcony
- On site porter
- Next to Hyde Park
- Walking distance to Marble Arch Underground station



Viewing

By appointment. Contact us on 0207 052 1075 if you wish to arrange a viewing appointment for this property, or require further information.

Energy

Energy Efficiency	
Very energy efficient - lower	
(92 plus)	A
(81-91)	B
(69-80)	C
(55-68)	
(39-54)	
(21-38)	
(1-20)	
Not energy efficient - higher	
England & Wales	

but must satisfy themselves by inspection or otherwise as to their