



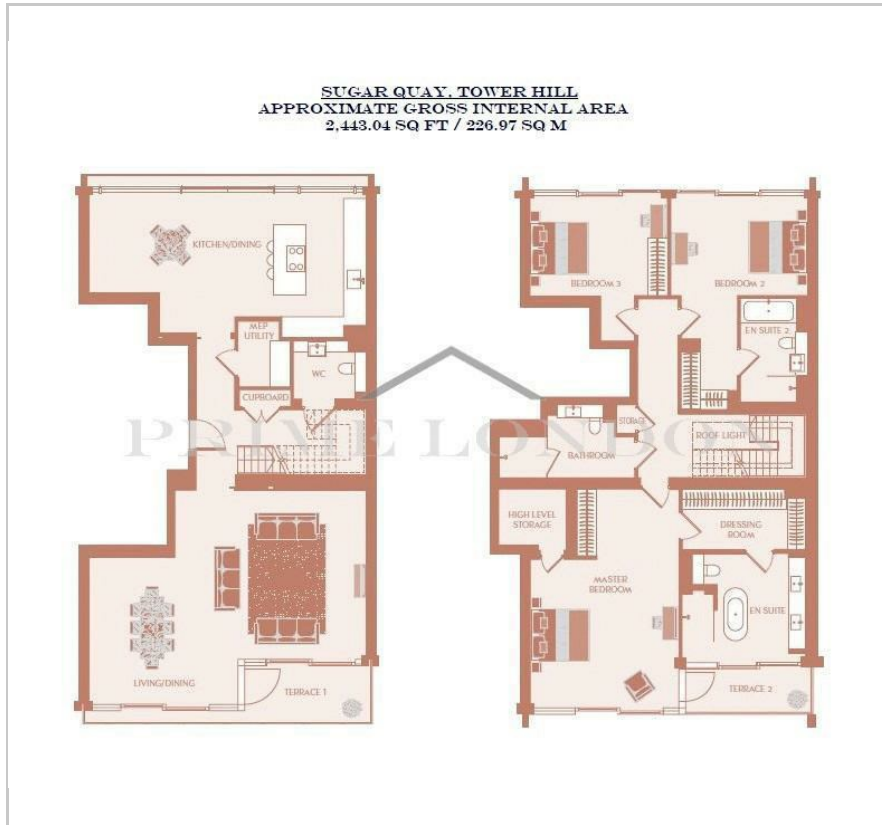
Sugar Quay

1 Water Lane, Tower Hill, EC3R 6AL

£3,300 Per Week



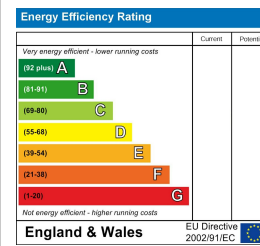
Floor Plan



Area Map



Energy Efficiency Graph



Viewing

By appointment. Contact us on 0207 052 1075 if you wish to arrange a viewing appointment for this property, or require further information.

- Duplex penthouse with river views
- Expertly interior designed and furnished
- 2,448.04 sq ft / 226.97 sq m
- Lounge, cinema room and business suite
- 20m swimming pool and spa, fitness suite
- 24 hour concierge



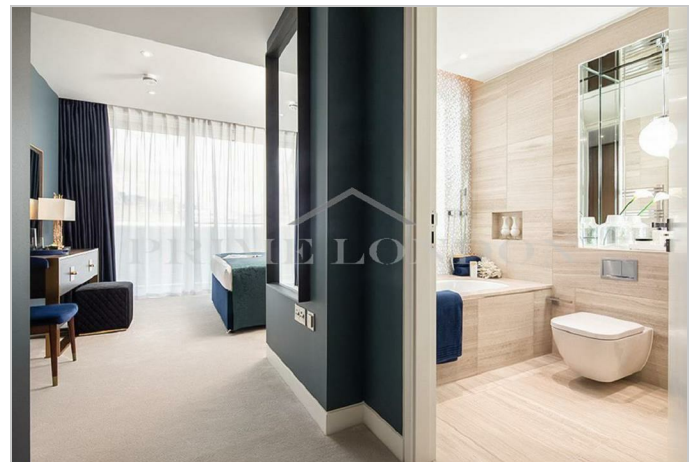
This elite three bedroom duplex penthouse, in the highly desirable Sugar Quay, is offered for lease on a fully furnished basis, and with two parking spaces, though Prime London.

The apartment, which is positioned over the top two floors of the development, offers 2,448 sq ft (226.97 sqm) of internal space, two private river facing balconies, and benefits from having a stunning reception room with views of the River Thames and Shard, and a spacious kitchen and dining room on the other side of the property with views of the City. The property also features three double bedrooms all with their own built in storage (with full dressing room in the master), two en-suite bathrooms, one separate family bathroom, and another separate WC. The apartment also benefits from stone flooring throughout most of the property, under floor heating, and comfort cooling.

The apartment interiors blend traditional and modern approaches with combinations of high-quality natural materials creating a harmonious and durable interiors. A bespoke designed kitchen with carefully selected finishes with top of the range appliances are an excellent touch, and luxurious bathrooms with stone finishes complete the apartment.

Sugar Quay holds an unparalleled position in the City of London, and offers private residents' facilities comprising a 24-hr concierge, 20m swimming pool and spa, fitness suite, lounge, cinema room and business suite.

Sugar Quay also benefits from superb transport links. Walk to Tower Hill in just 7 minutes for the Underground Circle and District Lines and walk to Bank in 12 minutes for Underground links to the Central, Northern and Waterloo & City lines.



These particulars, whilst believed to be accurate are set out as a general outline only for guidance and do not constitute any part of an offer or contract. Intending purchasers should not rely on them as statements of representation of fact, but must satisfy themselves by inspection or otherwise as to their accuracy. No person in this firm's employment has the authority to make or give any representation or warranty in respect of the property.