

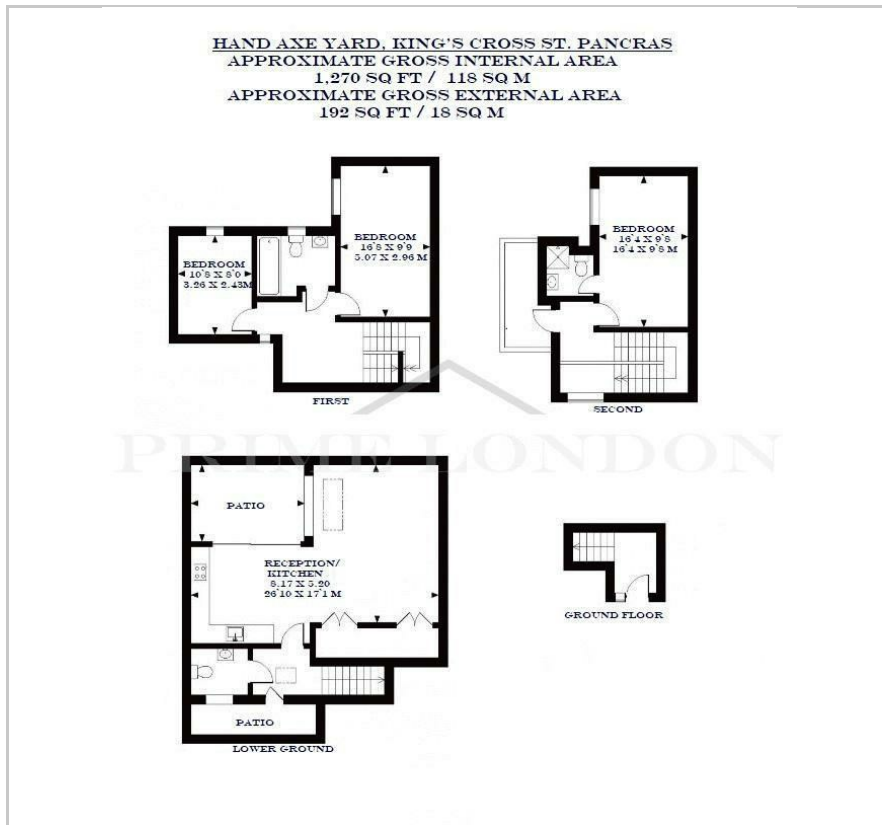
Hand Axe Yard

King's Cross St. Pancras, London, WC1X 8BD

Asking Price £1,590,000



Floor Plan



Area Map



Energy Efficiency Graph



Viewing

By appointment. Contact us on 0207 052 1075 if you wish to arrange a viewing appointment for this property, or require further information.

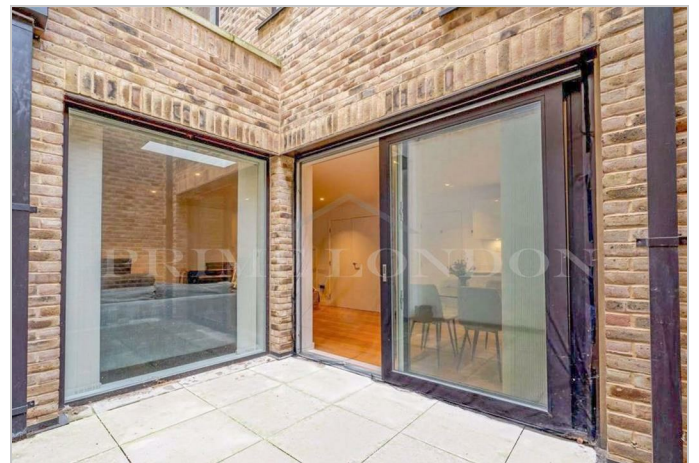
- A beautiful three bedroom three bathroom town house
- Three private outdoor spaces
- Gated Community
- 1,270 sq. ft (118 sqm)
- 250 yards from the world-renowned King's Cross St Pancras
- Concierge & Communal Courtyards

A stunning three bedroom three bathroom town house, offering expansive accommodation arranged over three floors conveniently situated in Hand Axe Yard within the St Pancras Place development is available for chain free sale through Prime London.

This well presented and spacious 1,270 sq. ft (118 sqm) property comprising entrance hall with stairs leading to an impressive reception room with oak veneer wood flooring, dining area, and open plan fitted kitchen with white quartz work tops and Bosch/Neff appliances, fitted storage and cloakroom/WC, en suite master bedroom with access to terrace area, an extra two bedroom and family bathroom.

Hand Axe Yard provides a very well maintained communal courtyard, a concierge and a private gym which is currently under construction.

The property is close access to Kings Cross, Euston and St Pancras International stations together with major learning institutions including UCL, LSE, University Of Arts and City University.



These particulars, whilst believed to be accurate are set out as a general outline only for guidance and do not constitute any part of an offer or contract. Intending purchasers should not rely on them as statements of representation of fact, but must satisfy themselves by inspection or otherwise as to their accuracy. No person in this firm's employment has the authority to make or give any representation or warranty in respect of the property.