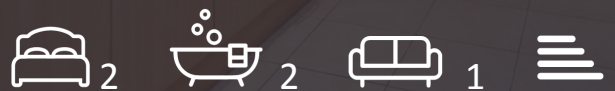


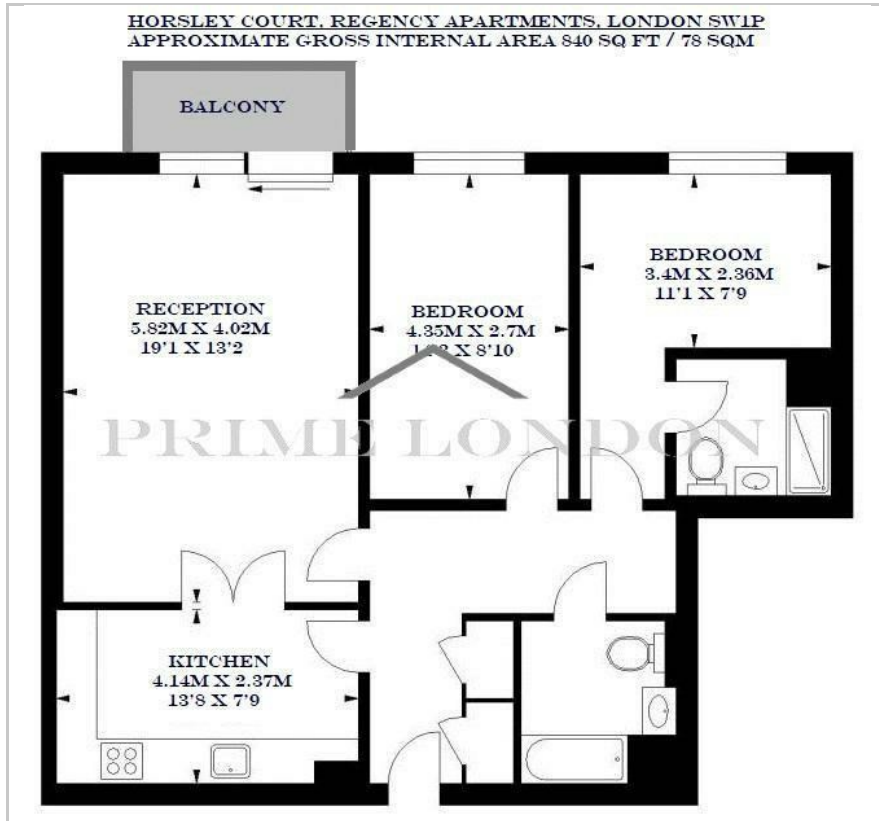
Horsley Court

Regency Apartments, Westminster, SW1P 4BF

£650 Per Week



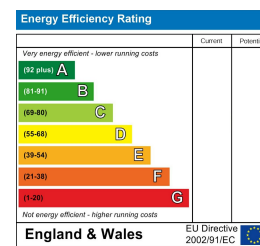
Floor Plan



Area Map



Energy Efficiency Graph



Viewing

Please contact our on 0207 052 1075 if you wish to arrange a viewing appointment for this property or require further information.



A spacious and light, two double bedroom apartment set within this secure, attractive and modern development with landscaped gardens.

This apartment features a large reception room with wooden flooring opening onto a private balcony. There is a well equipped contemporary kitchen, sizeable master bedroom with an en suite shower room, further double bedroom and a family bathroom.

The development is portered, has a well equipped gym with sauna and jacuzzi and there is a secure parking space with the property.

Horsley Court is conveniently located for the amenities, shops, bars and restaurants of Pimlico, Westminister and nearby Victoria.

Pimlico Station offers the nearest London Underground service on the Victoria Line, while Victoria Station, providing National Rail services and London Underground links on the Circle, District and Victoria Lines, is also close by.



These particulars, whilst believed to be accurate are set out as a general outline only for guidance and do not constitute any part of an offer or contract. Intending purchasers should not rely on them as statements of representation of fact, but must satisfy themselves by inspection or otherwise as to their accuracy. No person in this firm's employment has the authority to make or give any representation or warranty in respect of the property.