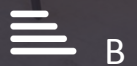




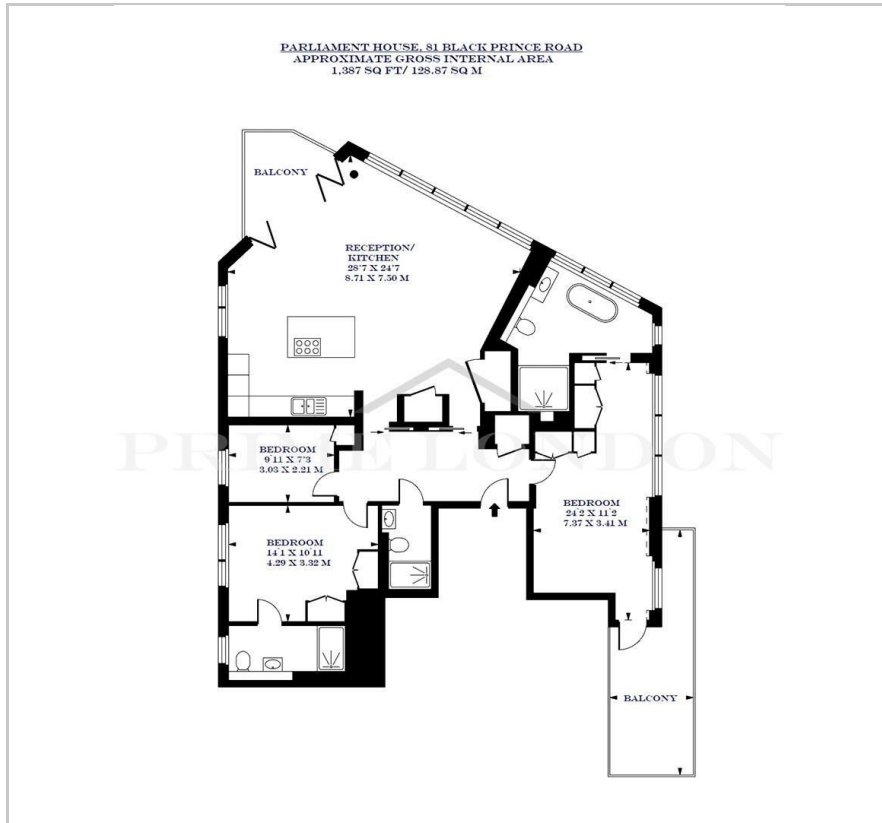
Parliament House

Black Prince Road, Albert Embankment, SE1 7ET

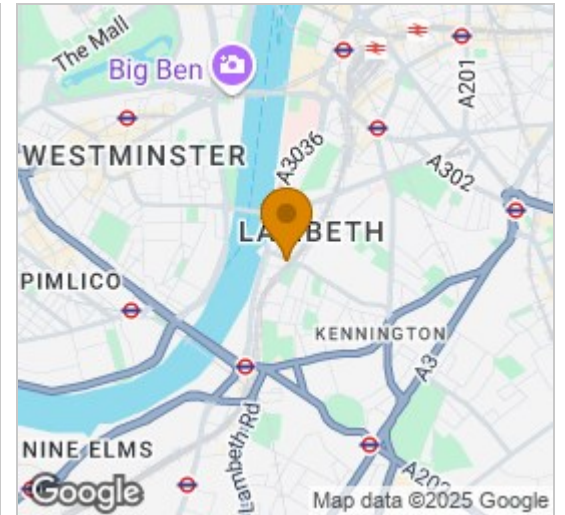
£1,550 Per Week



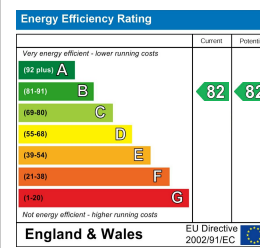
Floor Plan



Area Map



Energy Efficiency Graph



Viewing

By appointment. Contact us on 0207 928 6663 if you wish to arrange a viewing appointment for this property, or require further information.

- Penthouse apartment
- Fully furnished
- Resident's gym
- 1,387 sq ft (128.87 sqm)
- Two private balconies
- Concierge service



This beautifully furnished, high specification penthouse apartment with two private balconies – offering exceptional views of the River Thames and the city of London from the top of Parliament House – is available to rent through Prime London.

The apartment comprises a spacious open plan reception leading to a large balcony, a modern fully fitted kitchen with dishwasher and breakfast island, three large double bedrooms (two of which have ensuite bathrooms), and a further showroom.

All bedrooms are fitted with wardrobes and the primary bedroom also benefits from its own private balcony. The property also features parquet hardwood flooring, underfloor heating and comfort cooling.

Parliament House offers luxurious finishes to apartments and communal areas, features a residents' terrace, private gymnasium and a concierge service and has Westminster and Vauxhall Stations within walking distance.



These particulars, whilst believed to be accurate are set out as a general outline only for guidance and do not constitute any part of an offer or contract. Intending purchasers should not rely on them as statements of representation of fact, but must satisfy themselves by inspection or otherwise as to their accuracy. No person in this firm's employment has the authority to make or give any representation or warranty in respect of the property.