



## Bickenhall Mansions

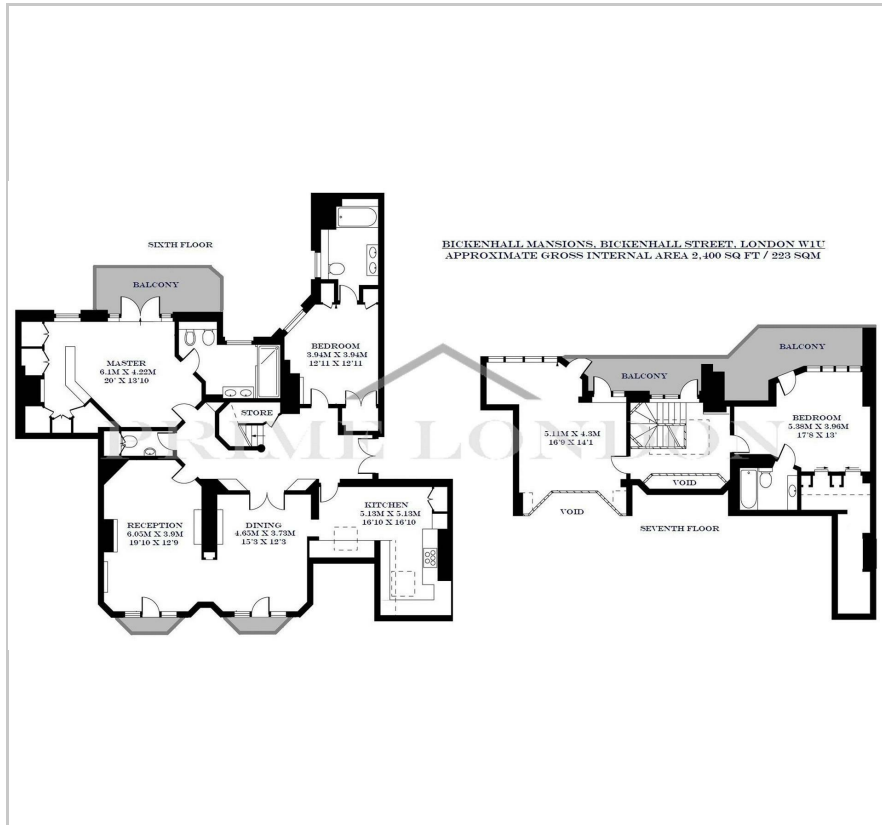
Bickenhall Street, Marylebone, W1U 6BS

£1,995 Per Week





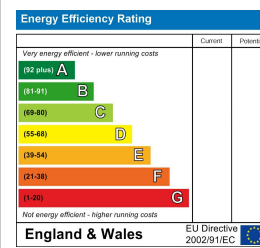
## Floor Plan



## Area Map



## Energy Efficiency Graph



## Viewing

By appointment. Contact us on 0207 052 1075 if you wish to arrange a viewing appointment for this property, or require further information.

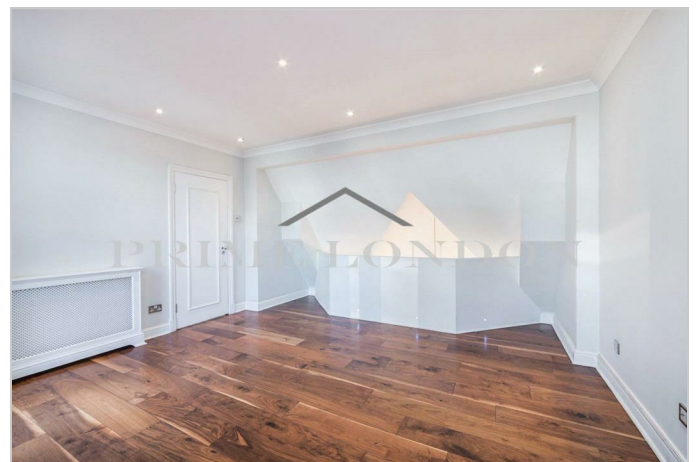
- Astonishing and spacious ▪ 2,400 sq ft duplex penthouse apartment
- Sought-after portered ▪ Moments from Marylebone mansion block High Street and the West End



An astonishing and spacious duplex penthouse apartment, set over 2,400 sq ft, available through Prime London within this highly sought-after portered mansion block in Marylebone.

Bickenhall Mansions is superbly located just moments from the world class amenities of Portman Village, Marylebone High Street and the West End, together with the greenery of both Hyde Park and Regent's Park.

The transport links are excellent from nearby Baker Street, (approximately 0.2 miles), Edgware Road (approximately 0.4 miles) and Marble Arch (approximately 0.7 miles) underground stations. Marylebone (approximately 0.3 miles) and Paddington (approximately 0.9 miles) train stations, as well as access to the West and Heathrow via the A40.



These particulars, whilst believed to be accurate are set out as a general outline only for guidance and do not constitute any part of an offer or contract. Intending purchasers should not rely on them as statements of representation of fact, but must satisfy themselves by inspection or otherwise as to their accuracy. No person in this firm's employment has the authority to make or give any representation or warranty in respect of the property.