



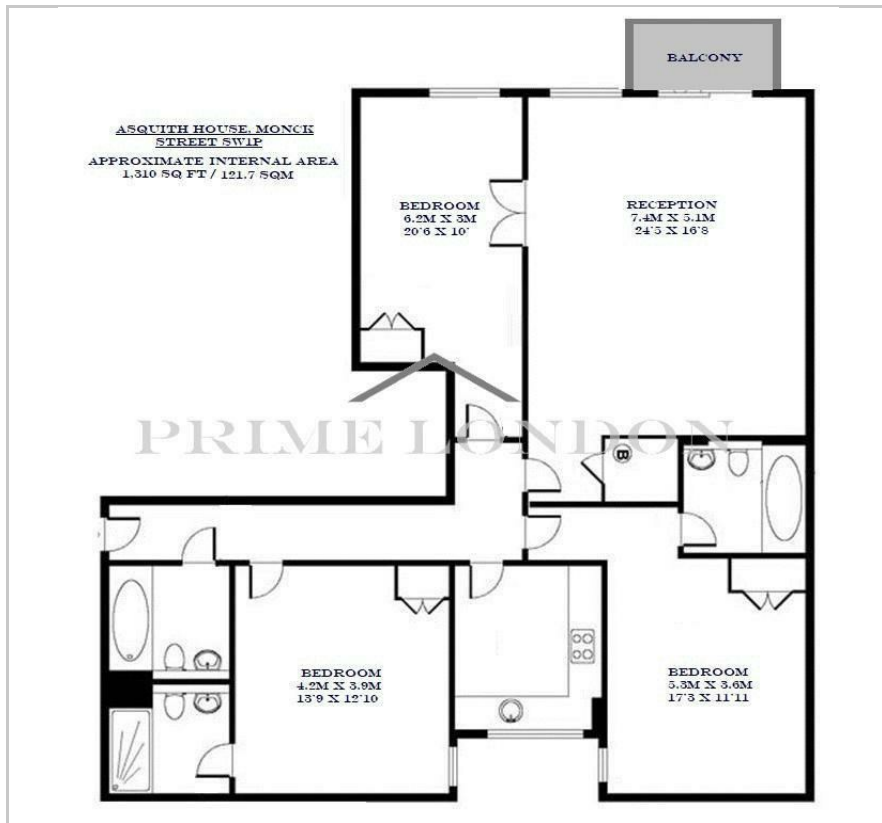
Asquith House

27 Monck Street, Westminster, SW1P 2AR

£1,000 Per Week



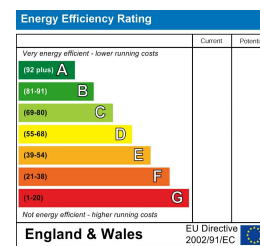
Floor Plan



Area Map



Energy Efficiency Graph



Viewing

Please contact our on 0207 052 1075 if you wish to arrange a viewing appointment for this property or require further information.

- Three double bedroom ▪ 1,310 sq ft (121.7 sqm) apartment
- Air Conditioning ▪ 24 hour concierge
- Secure Parking ▪ Sought after area in the heart of Westminster



A three double bedroom apartment of 1,310 sq ft (121.7 sqm) within this secure and excellent positioned development on Monck Street, available for lease through Prime London. The property features a large living room, separate fully fitted kitchen, three bedrooms and three bathrooms as well as air-conditioning, a 24 hour concierge and secure parking. Located in one of London's most sought after areas in the heart of Westminster, adjacent to the Home Office and a short walk to the Houses Of Parliament and Westminster Abbey, it is also a pleasant walk to the Cardinal Place Shopping Centre and the restaurants and shops of Pimlico.



These particulars, whilst believed to be accurate are set out as a general outline only for guidance and do not constitute any part of an offer or contract. Intending purchasers should not rely on them as statements of representation of fact, but must satisfy themselves by inspection or otherwise as to their accuracy. No person in this firm's employment has the authority to make or give any representation or warranty in respect of the property.