

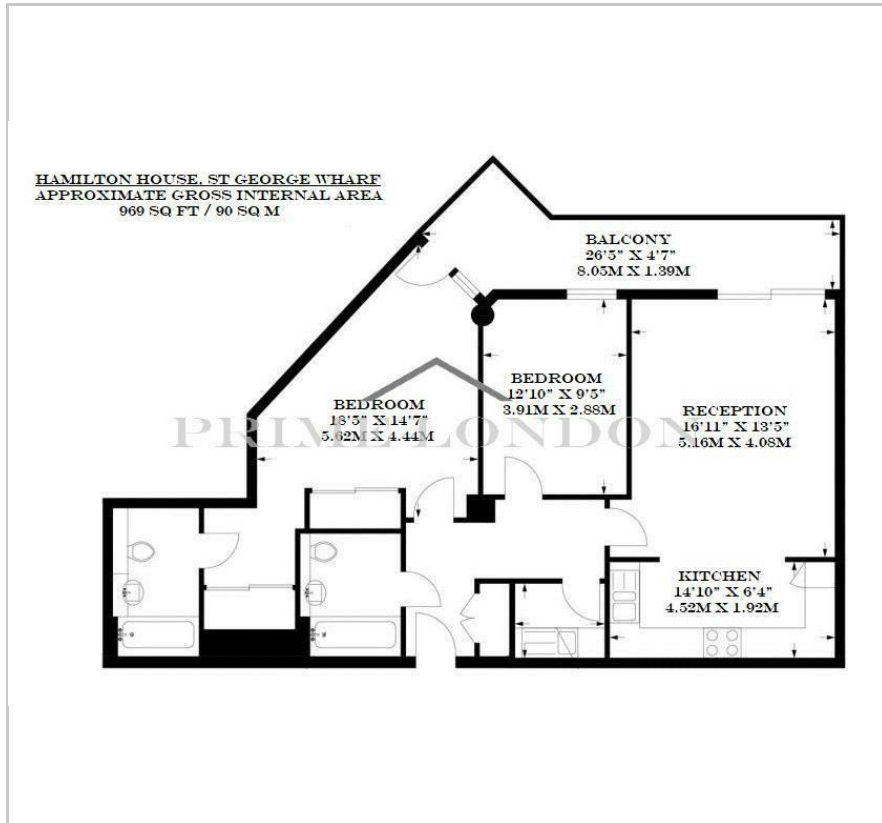


Hamilton House

St. George Wharf, SW8 2JE

£675 Per Week

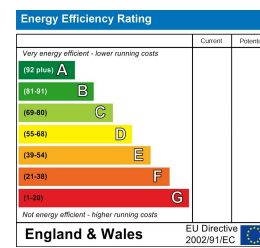
Floor Plan



Area Map



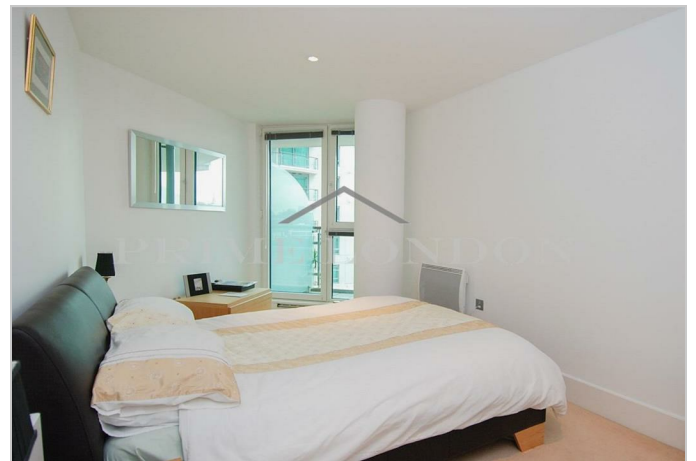
Energy Efficiency Graph



Viewing

Please contact our on 0207 928 6663 if you wish to arrange a viewing appointment for this property or require further information.

- 969 sq ft (90 sqm)
- 24 hour concierge
- River views
- Restaurants, bars, coffee shops



A large two bedroom two bathroom apartment of 969 sq ft (90 sqm), with river views, available for lease through Prime London in St. George Wharf. The property offers very generous dimensions, a large private balcony, high specification kitchen and bathrooms, wooden flooring, integrated storage and recessed lighting.

This apartment benefits from the fantastic transport links afforded by this very well kept complex by The River Thames. St George Wharf offers on site riverside bars and restaurants such as Waterfront London, The Riverside, Four Degree and Pop Art Sushi as well as direct access to Vauxhall Underground Station on the Victoria Line.

For additional convenience other on site outlets include Tesco Express, Pret a Manger, Hudson's Dry Cleaners, Riverside Medical Centre & Dental Spa and more.



These particulars, whilst believed to be accurate are set out as a general outline only for guidance and do not constitute any part of an offer or contract. Intending purchasers should not rely on them as statements of representation of fact, but must satisfy themselves by inspection or otherwise as to their accuracy. No person in this firm's employment has the authority to make or give any representation or warranty in respect of the property.