



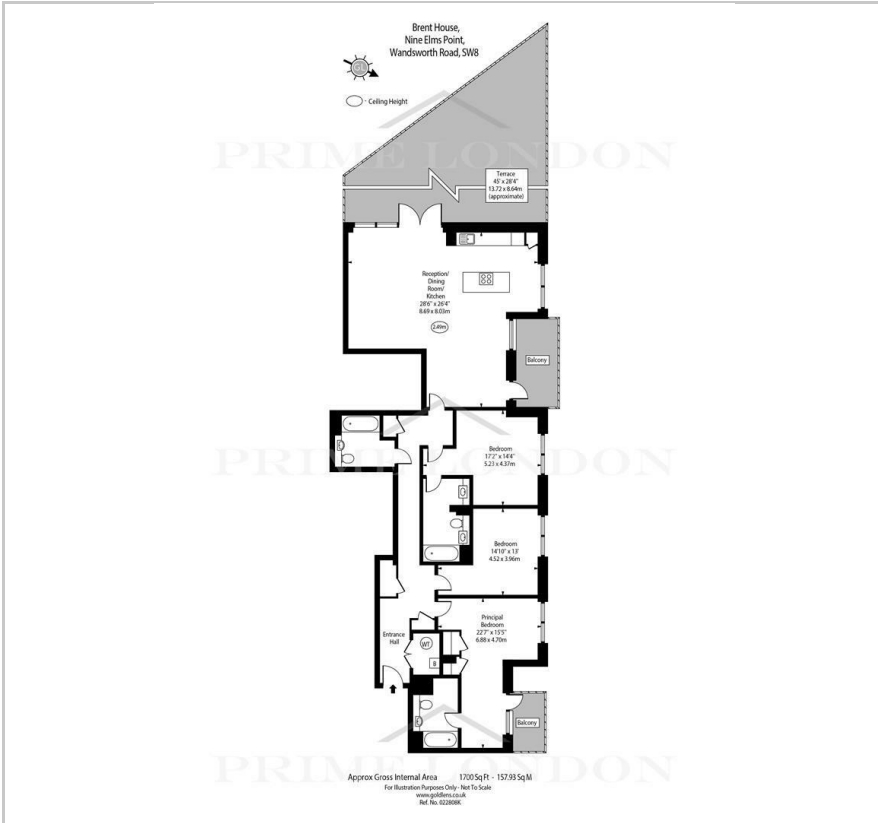
Brent House

Nine Elms Point, 50 Wandsworth Road, SW8 2FL

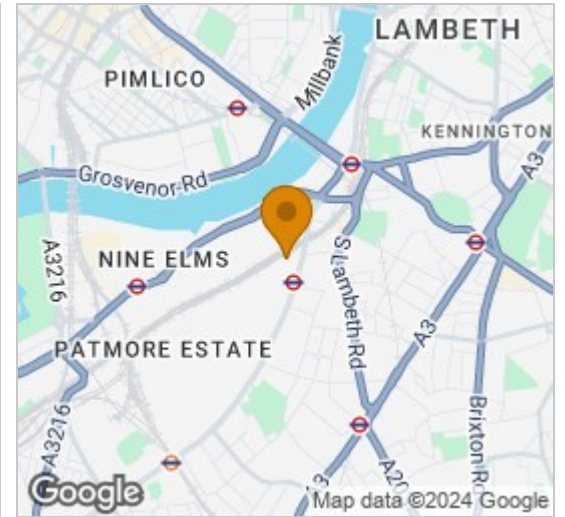
£1,557 Per Week



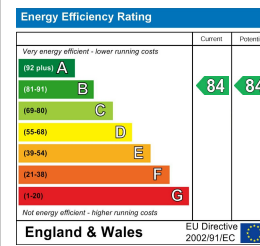
Floor Plan



Area Map



Energy Efficiency Graph



Viewing

By appointment. Contact us on 0207 928 6663 if you wish to arrange a viewing appointment for this property, or require further information.

- Three bedroom, three bathroom penthouse
- Underground car parking
- 1700 sq ft (157.93 sqm)
- Available Now
- Luxuriously furnished
- Expansive private terrace
- 24 hour concierge and fitness suite
- Excellent transport links

Prime London is proud to present this extraordinary three-bedroom lateral penthouse with underground parking in Brent House, Nine Elms Point. Spanning an impressive 1700 sq ft (157.93 sq m) internally, this residence offers an exclusive opportunity for discerning individuals seeking refined family living.

Upon entering the apartment, you are greeted by a homely and expansive living room seamlessly connected to an open-plan kitchen and dining area. Every inch of this space has been tastefully adorned, creating a haven of comfort and elegance. The high-spec kitchen features fully integrated AEG appliances, modern fittings, and a welcoming kitchen island that opens up to a contemporary style of living and entertainment. Undoubtedly, the star of the show is the expansive private terrace, a haven for relaxation spanning 45 ft. With a south-west orientation, it offers enchanting views and a comfortable seating area—an ideal spot for unwinding on warm London summer evenings.

The penthouse accommodates three generously sized double bedrooms, each exquisitely decorated and furnished. The two main bedrooms enjoy the luxury of modern ensembles, while a separate family/guest bathroom completes the living space.

Beyond the confines of this exceptional residence, Nine Elms Point stands as a symbol of urban sophistication. Nestled at the forefront of Europe's largest regeneration scheme, it features beautifully landscaped courtyards, elevated promenades, a fitness suite, and the convenience of a 24-hour concierge service.



These particulars, whilst believed to be accurate are set out as a general outline only for guidance and do not constitute any part of an offer or contract. Intending purchasers should not rely on them as statements of representation of fact, but must satisfy themselves by inspection or otherwise as to their accuracy. No person in this firm's employment has the authority to make or give any representation or warranty in respect of the property.