



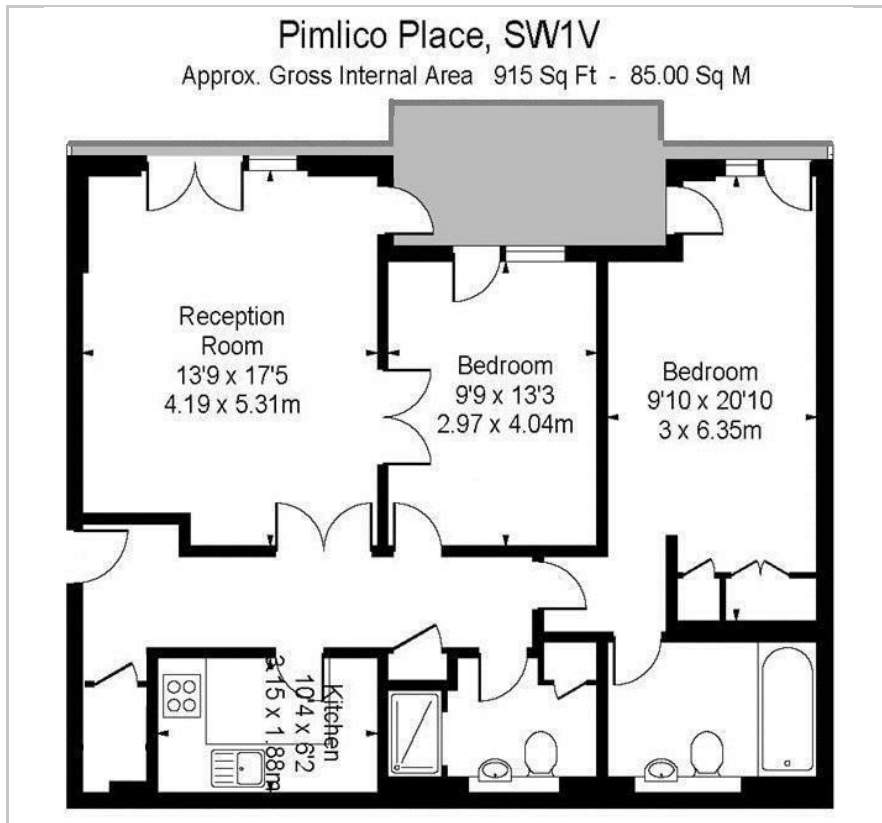
Pimlico Place

28 Guildhouse Street, Pimlico, SW1V 1JJ

£675 Per Week



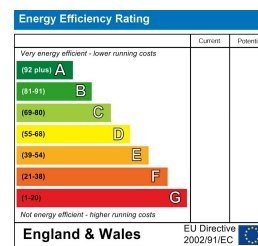
## Floor Plan



## Area Map



## Energy Efficiency Graph



## Viewing

Please contact our on 0207 052 1075 if you wish to arrange a viewing appointment for this property or require further information.

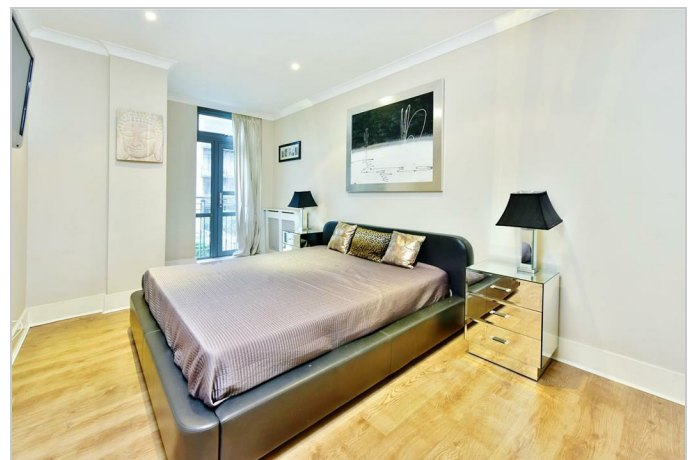
- Exquisitely furnished and designed
- Secure development designed
- 24 hour concierge service
- Ideal location



An exquisitely furnished and designed apartment of over 900 sq ft, with separate kitchen and wooden flooring, available within this secure development through Prime London.

The property offers secure parking, a balcony overlooking the water garden with access from all principal rooms, two double bedrooms (master with en suite), separate family bathroom and fully fitted separate kitchen.

Pimlico Place benefits from a 24 hour concierge service, a residents-only gymnasium and an ideal location for the amenities of Warwick Way and the transport connections of Victoria Station just a few minutes' walk away.



These particulars, whilst believed to be accurate are set out as a general outline only for guidance and do not constitute any part of an offer or contract. Intending purchasers should not rely on them as statements of representation of fact, but must satisfy themselves by inspection or otherwise as to their accuracy. No person in this firm's employment has the authority to make or give any representation or warranty in respect of the property.