



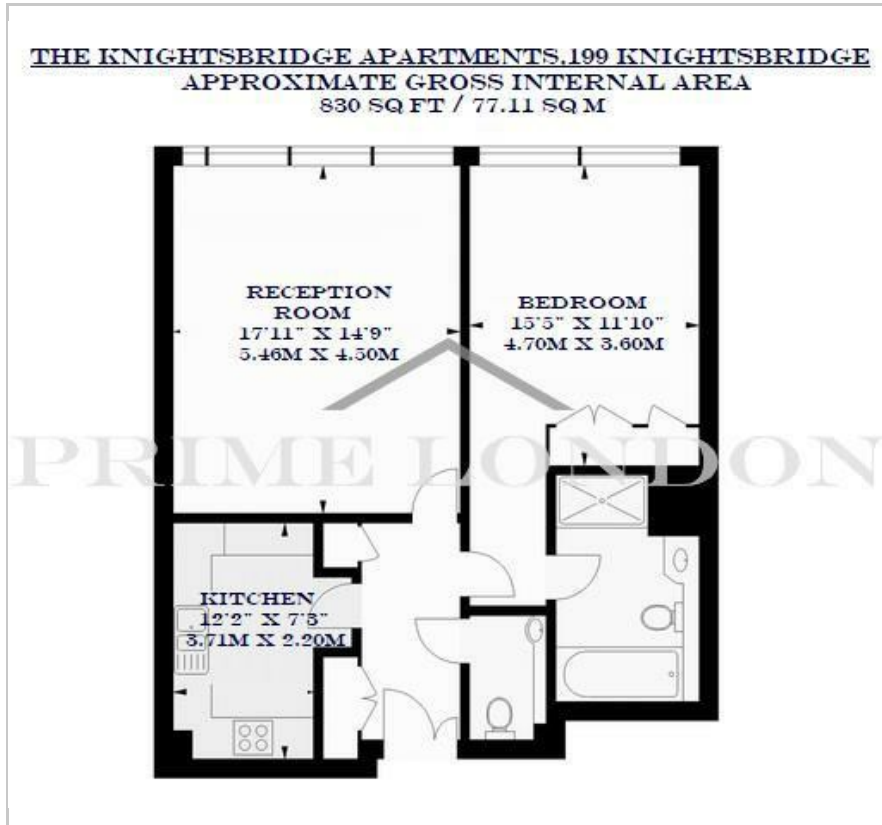
The Knightsbridge

199 Knightsbridge, SW7 1RH

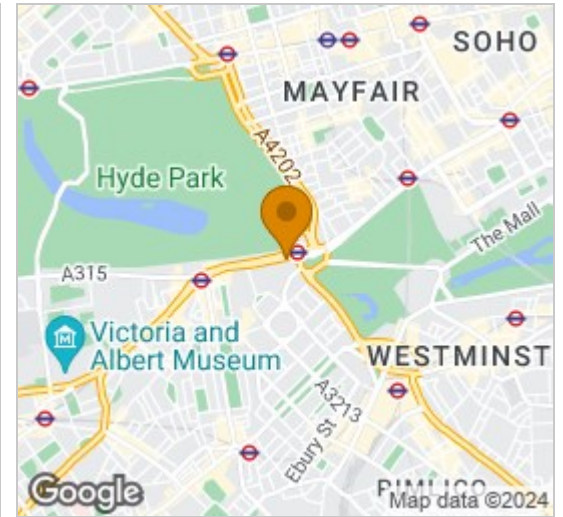
£2,300 Per Week



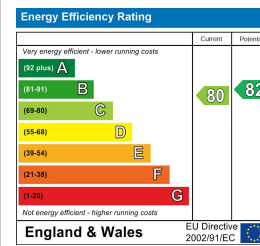
Floor Plan



Area Map



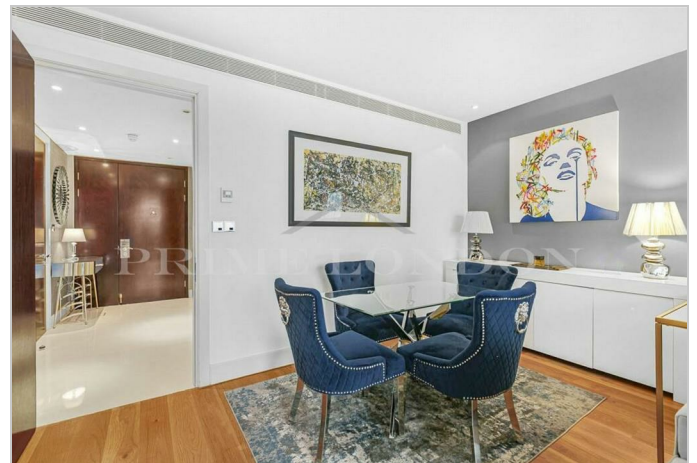
Energy Efficiency Graph



Viewing

By appointment. Contact us on 0207 052 1075 if you wish to arrange a viewing appointment for this property, or require further information.

- One bedroom apartment
- 830 sq ft (77.11 sqm)
- Furnished
- Exclusive business-suite
- Leisure suite with gym, spa
- 24 hour concierge and swimming pool



This fantastic fully furnished one bedroom apartment, located in the exclusive The Knightsbridge development in the heart of Knightsbridge, is available to rent through Prime London.

The larger than average 830 sq ft (77.11 sqm) enjoys fantastic views through floor to ceiling glass walls to the garden, and comprises a spacious reception room, separate fully fitted kitchen, double broom with built in storage, four four-piece family bathroom and separate WC. Underground parking is also available (subject to separate negotiation and availability).

This property also benefits from 24-hour concierge & security, a world-class leisure suite with gym, spa and swimming pool, an exclusive business-suite available for residents' use, and beautifully landscaped communal gardens.

The Knightsbridge is located centrally with easy access to Underground Stations, Knightsbridge (Piccadilly line), South Kensington (Piccadilly, Circle and Distract lines) and Hyde Park Corner (Piccadilly line); the property is also ideally located close to the world renowned Harrods, as well as all the attractions and facilities of the West End.



These particulars, whilst believed to be accurate are set out as a general outline only for guidance and do not constitute any part of an offer or contract. Intending purchasers should not rely on them as statements of representation of fact, but must satisfy themselves by inspection or otherwise as to their accuracy. No person in this firm's employment has the authority to make or give any representation or warranty in respect of the property.