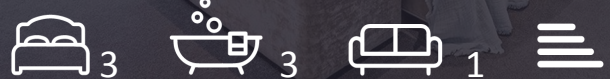




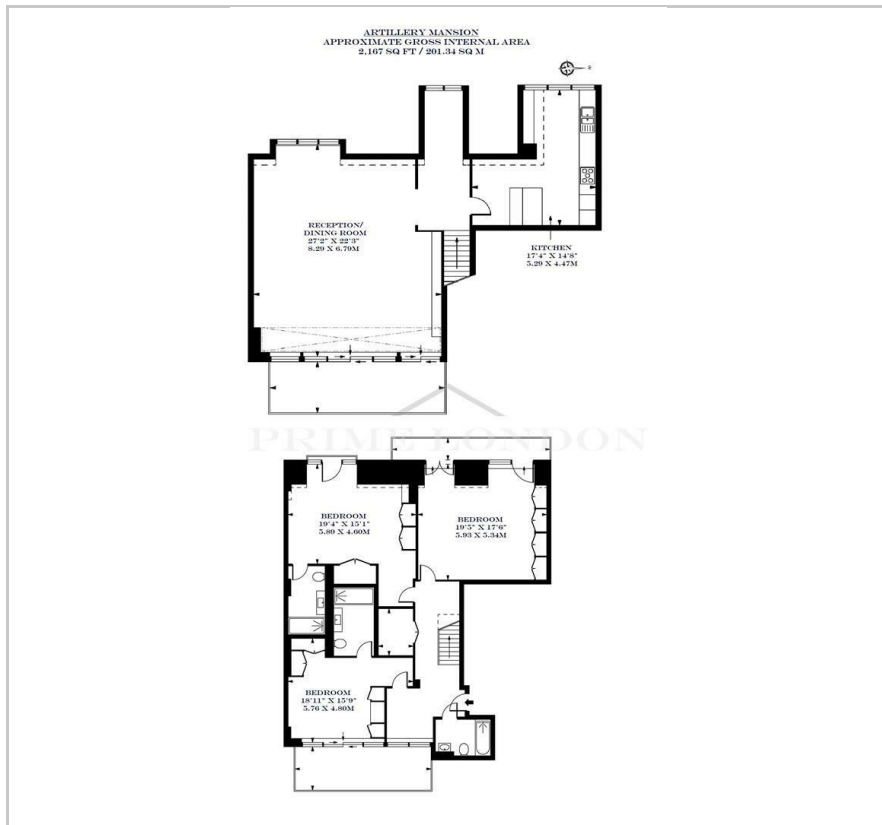
Artillery Mansions

Victoria Street, Westminster, SW1H 0HY

£2,076 Per Week



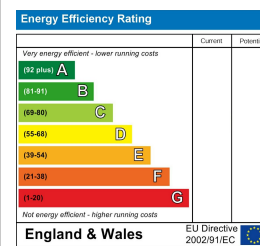
Floor Plan



Area Map



Energy Efficiency Graph

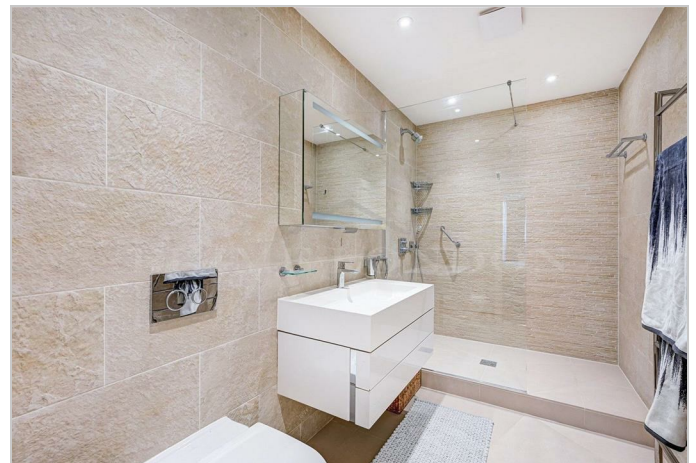


Viewing

By appointment. Contact us on 0207 052 1075 if you wish to arrange a viewing appointment for this property, or require further information.

- Three bedroom luxurious ■ 2,167 sq ft (201.34 sqm) penthouse
- Prestigious St James's Park ■ Excellent transport connections
- Two parking spaces ■ 24 hours concierge

This property is a luxurious and spacious duplex penthouse apartment situated on the 11th and 12th floors of prestigious Artillery Mansions development and is available for lease through Prime London. The apartment features three bedrooms and three bathrooms, offering ample living space for comfortable living. The entire apartment has been recently redecorated and is presented in impeccable condition, boasting a contemporary and attractive style. One of the highlights of the property is its three large private terraces, providing stunning panoramic views across the city. These terraces offer an excellent space for outdoor relaxation, entertainment, and enjoying the beautiful surroundings. Inside, the apartment includes a large reception room, perfect for social gatherings and relaxation. The kitchen is equipped with high-quality fittings and appliances, adding to the overall modern and elegant feel of the property. Comfort is further enhanced by air-conditioning throughout the apartment, ensuring a pleasant environment. Additionally, the property offers the convenience of garaged parking for two cars, providing secure and protected storage for vehicles. As part of the building's amenities, residents have access to a 24/7 concierge service, providing assistance and support whenever needed. Moreover, the building is equipped with lifts, making it easy and convenient to access all floors. In summary, this penthouse apartment offers a combination of luxury, convenience, and modern living in a highly sought-after location, making it an exceptional property for those seeking a premium and sophisticated urban living experience. Artillery Mansions is a famed and well-maintained development in central Westminster. It is located to the south of Buckingham Palace, St James's and Green Park, to the east of Victoria and to the north of Vincent Square. The property is within reach of the many amenities, restaurants, cafes and shops of Victoria, Westminster, St James's and Mayfair. This



These particulars, whilst believed to be accurate are set out as a general outline only for guidance and do not constitute any part of an offer or contract. Intending purchasers should not rely on them as statements of representation of fact, but must satisfy themselves by inspection or otherwise as to their accuracy. No person in this firm's employment has the authority to make or give any representation or warranty in respect of the property.