



Riverwalk

161 Millbank, Westminster, SW1P 4FD

Asking Price £1,750,000



2



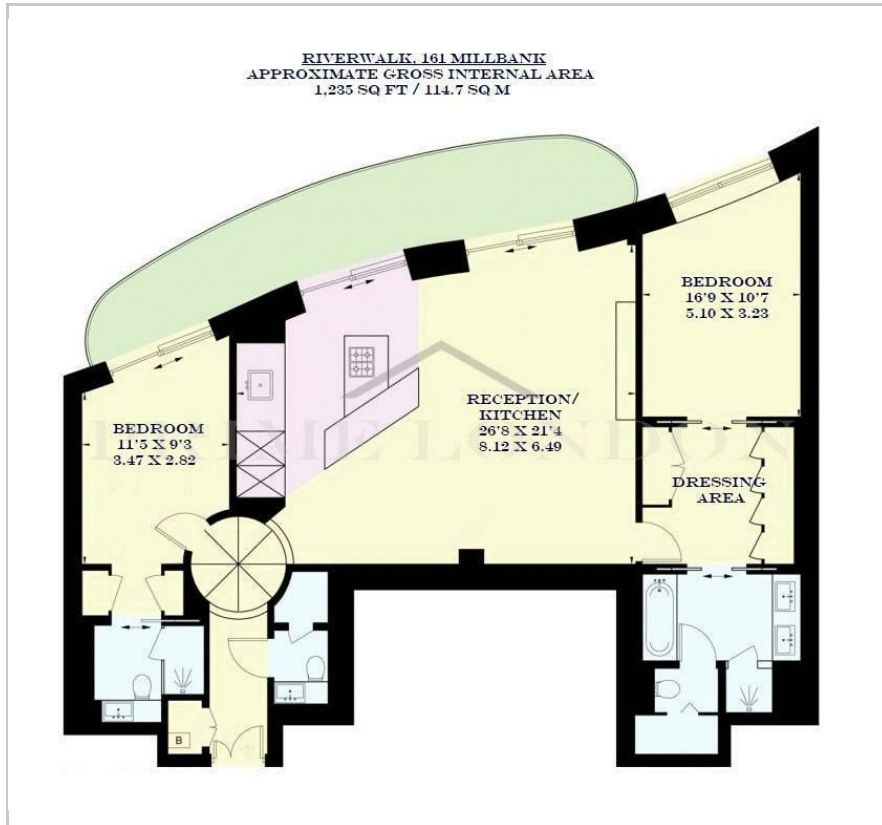
2



1



Floor Plan



Area Map



Energy Efficiency Graph



Viewing

By appointment. Contact us on 0207 052 1075 if you wish to arrange a viewing appointment for this property, or require further information.

- Large two bedroom ▪ 1,235 sq ft (114.7 sqm) apartment
- Secure parking space and ▪ Large private balcony storage unit
- Residents' gym ▪ 24 hour concierge

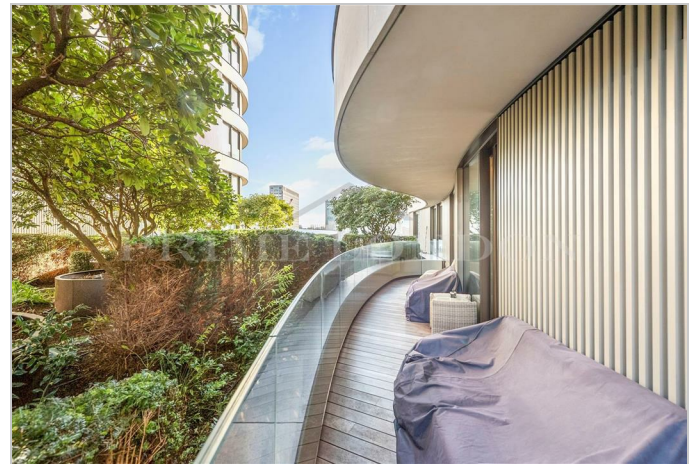
This beautifully finished, bright and spacious two bedroom apartment of 1,235 sq ft (114.7 sqm), with large balcony overlooking the beautiful landscaped gardens and River Thames, is available for chain free sale within the exquisite Riverwalk development through Prime London.

The property also comes with a secure parking space and storage unit.

Finished to an excellent standard throughout, the apartment consists of an open plan reception room leading to a large private balcony and state of the art Boffi kitchen with integrated Miele and Gaggenau appliances, two double bedrooms complete with built in wardrobes, dressing area and two luxuriously en suite bathrooms.

The apartment is also fitted with Crestron lighting and home automation system, comfort cooling and underfloor heating.

Residents of Riverwalk will benefit from excellent 24 hour concierge service, as well as an on site gymnasium and yoga studio overlooking the river. Riverwalk is situated on the banks of the River Thames in Westminister, a few minutes walk from Pimlico underground station which provides Victoria line services into Central London.



These particulars, whilst believed to be accurate are set out as a general outline only for guidance and do not constitute any part of an offer or contract. Intending purchasers should not rely on them as statements of representation of fact, but must satisfy themselves by inspection or otherwise as to their accuracy. No person in this firm's employment has the authority to make or give any representation or warranty in respect of the property.