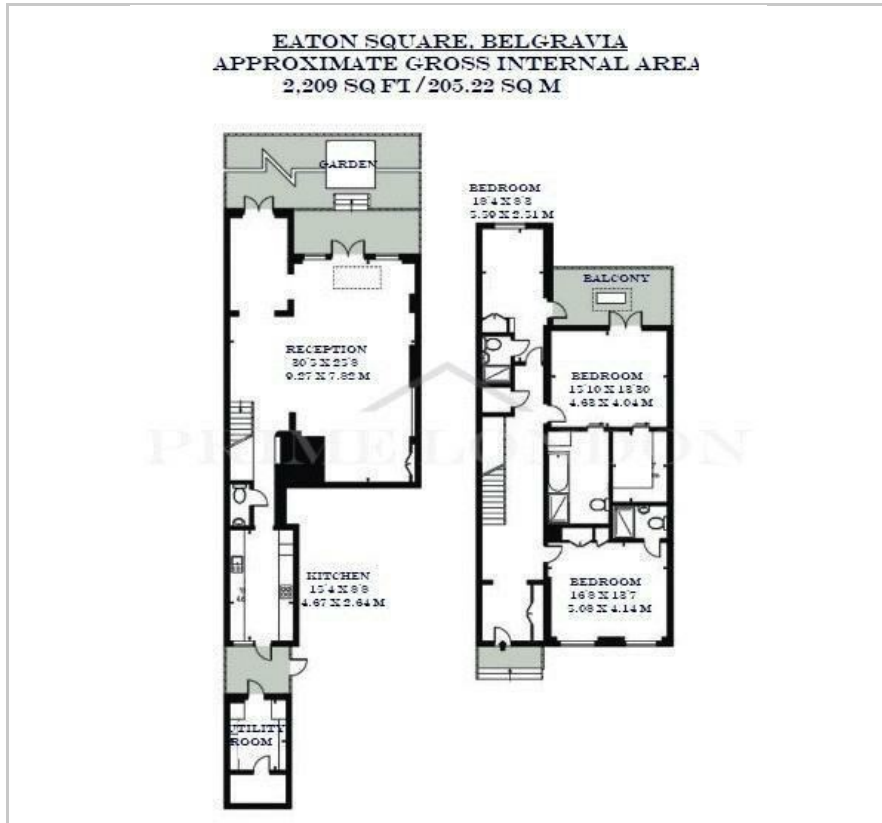




Eaton Square  
Belgravia, SW1W 9DD  
£8,000 Per Week

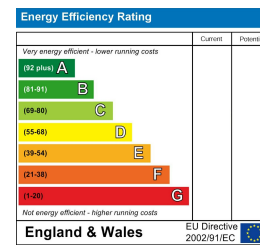
## Floor Plan



## Area Map



## Energy Efficiency Graph



## Viewing

Please contact our on 0207 052 1075 if you wish to arrange a viewing appointment for this property or require further information.

- Expansive and luxurious
- Designer furnishings
- Private entrance and terrace
- 2,209 sq ft (205.22 sqm)
- Minutes from Sloane Square and Victoria station
- Porter Service

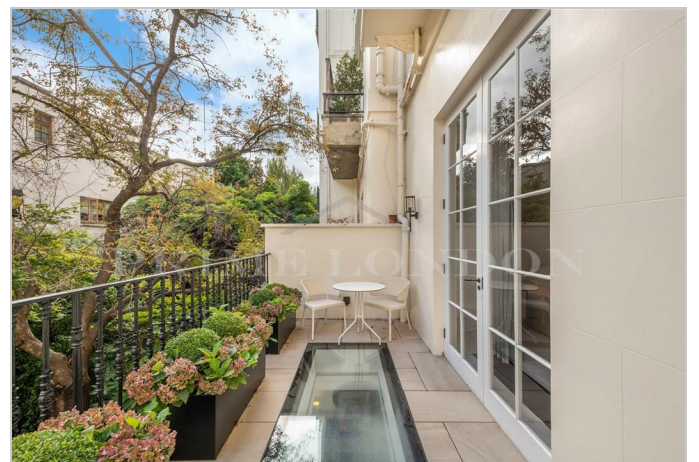
This exceptionally expensive and luxurious three bedroom, three bathroom house boasts a 2,209 sq ft / 205.22 sq m set in the highly desired Eaton Square, is available to rent through Prime London.

The property, comes fully furnished to an amazingly high standard consists of an entrance hallway with marble floors and high ceilings, all three bedrooms that offers an en-suite bathroom, bathtub, balcony and bespoke wardrobes.

The main reception room features and formal seating area with marble fireplace, wall mounted TV and bespoke bookcases leading onto a stylish dining area. This amazing house further benefits from a modern kitchen equipped with miele appliances and a completely separate utility room.

Additional unique factors include air conditioning throughout, garden square access (available at a separate cost) and an entertaining Terrace with handpicked foliage, ample seating and outdoor heaters.

Eaton Square is a picturesque, exclusive garden square offering immediate access to the local shops and eateries available around Belgravia and Sloane Square.



These particulars, whilst believed to be accurate are set out as a general outline only for guidance and do not constitute any part of an offer or contract. Intending purchasers should not rely on them as statements of representation of fact, but must satisfy themselves by inspection or otherwise as to their accuracy. No person in this firm's employment has the authority to make or give any representation or warranty in respect of the property.