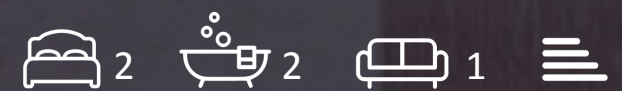




Milford House, 190 The Strand, WC2R 1DT

£1,600 Per Week





£1,600 Per Week

Milford House

190 The Strand, WC2R 1DT

- Duplex two bedroom apartment
- Fully furnished
- State of the art gym and swimming pool/spa
- Secure parking space
- Private residents' cinema
- 24 hour concierge service

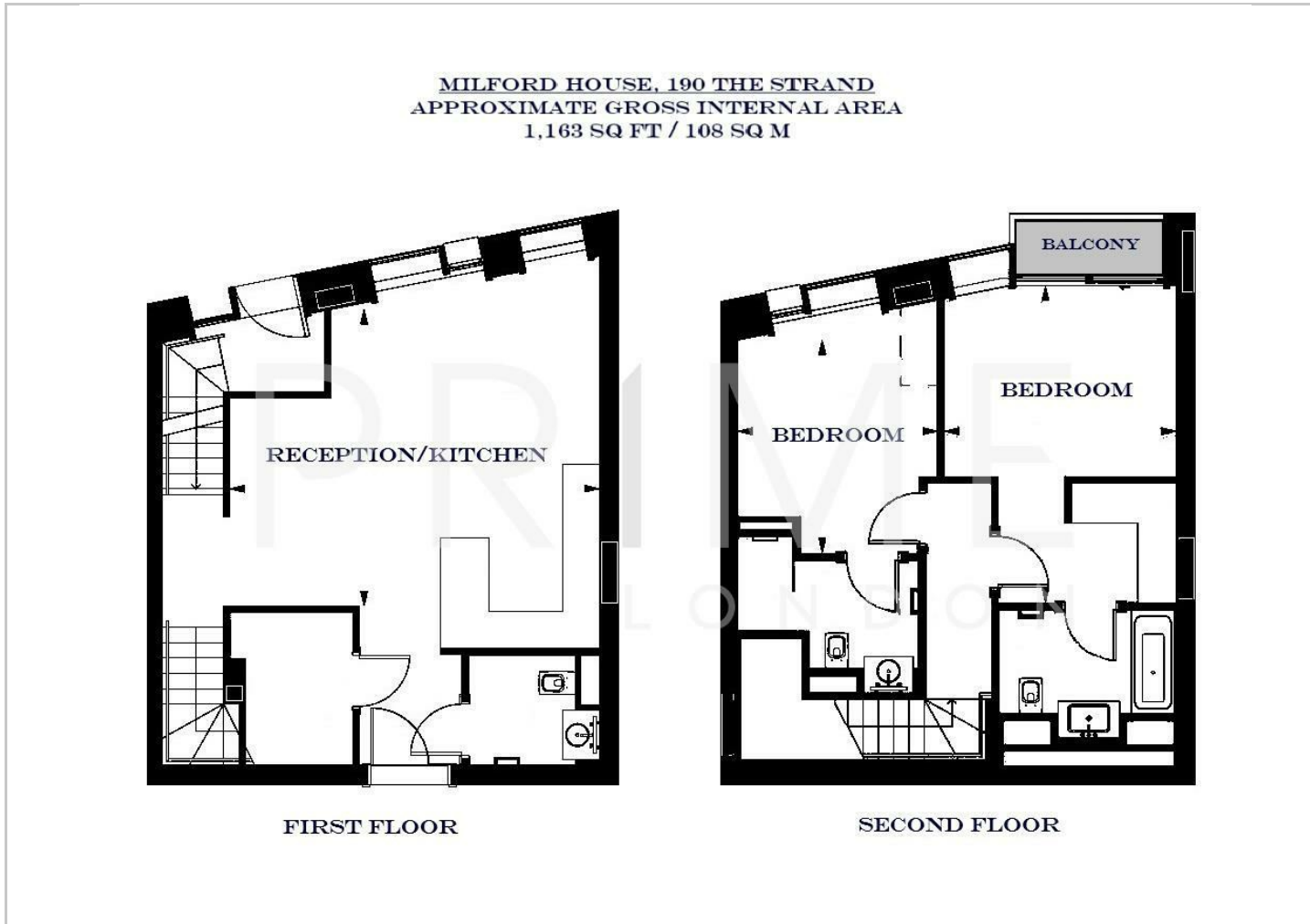
This luxurious and spacious two bedroom duplex apartment of 1,163 sq ft / 108 sq m, situated in a lovely quiet position within the premium 190 The Strand development and close to the banks of the River Thames and Covent Garden, is available to rent through Prime London. Parking is available through separate negotiation. This fully furnished property benefits from being arranged over two floors, adding to the sense of space. On the first floor you will find a large open-plan reception room with dining area, a smart kitchen with Miele integrated appliances. Though the hall and up the stairs you will find two substantial double bedrooms, one with dressing area and private balcony, and both with their own luxury bathroom suites. The property also benefits from comfort cooling, solid parquet wood flooring, two Juliette style balconies, and a laundry closet. 190 The Strand benefits from a five-star 24 hour concierge service, resident's private cinema, state of the art gym and swimming pool/spa.



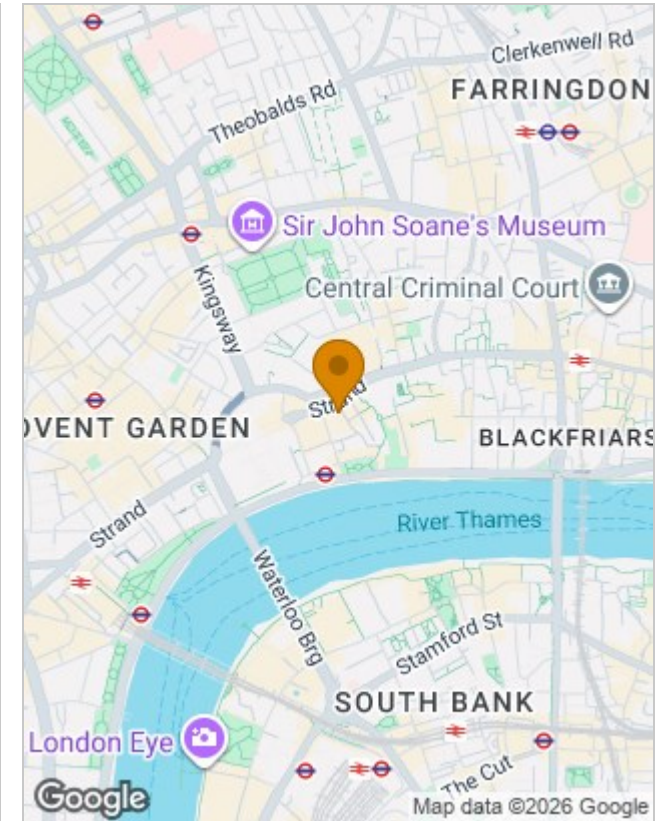




Floor Plans



Location Map



Energy Performance Graph

Energy Efficiency Rating		Current	Potential
<i>Very energy efficient - lower running costs</i>			
(92 plus) A			
(81-91) B			
(69-80) C			
(55-68) D			
(39-54) E			
(21-38) F			
(1-20) G			
<i>Not energy efficient - higher running costs</i>			
England & Wales	EU Directive 2002/91/EC		

Viewing

By appointment. Contact us if you wish to arrange a viewing appointment for this property, or require further information.

The particulars are set out as a general outline only for the guidance of intended purchasers or lessees, and do not constitute, any part of a contract. Nothing in these particulars shall be deemed to be a statement that the property is in good structural condition or otherwise nor that any of the services, appliances, equipment or facilities are in good working order. Purchasers should satisfy themselves of this prior to purchasing.