

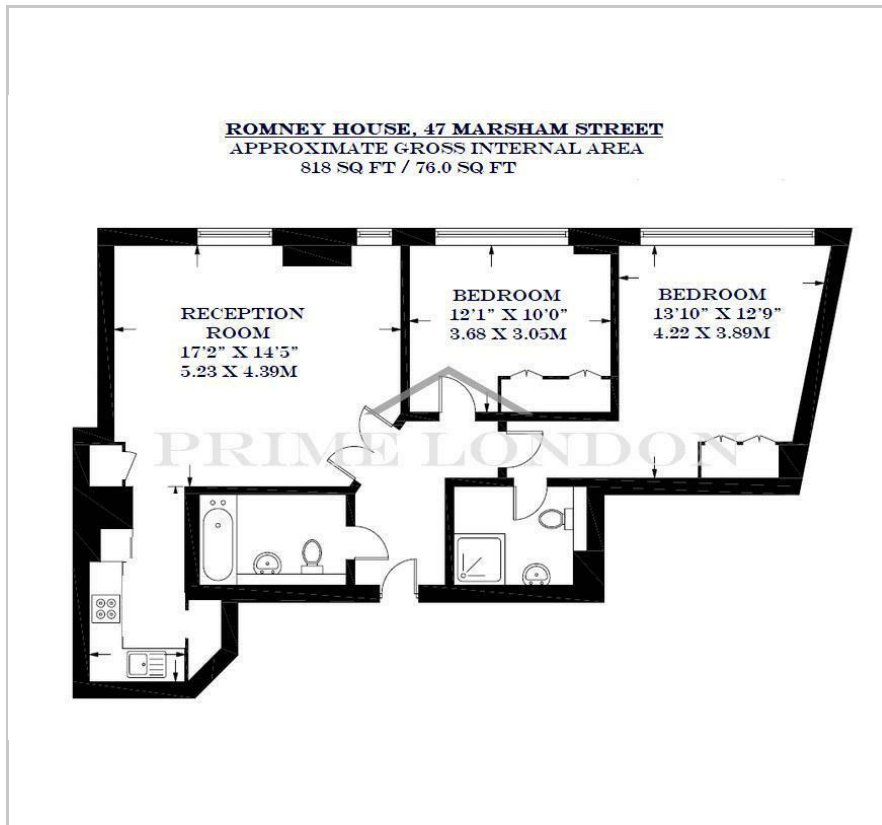
## Romney House

47 Marsham Street, Westminster, SW1P 3DS

£675 Per Week



## Floor Plan



## Area Map



## Energy Efficiency Graph



## Viewing

By appointment. Contact us on 0207 052 1075 if you wish to arrange a viewing appointment for this property, or require further information.

- Two bedrooms and two bathrooms ▪ 818 sq ft (76.0 sqm)
- Fully furnished ▪ Residents Leisure Suite with Gym, Sauna & Treatment Room
- Walking Distance of St James's Park, Westminster & Victoria ▪ 24 hour concierge

This spacious and fully furnished two bedroom two bathroom apartment, coming in at 818 sq ft / 76.0 sq m, within Romney House is available to rent through Prime London.

Residents can also enjoy access to Romney House's communal courtyard gardens, whilst a health and fitness suite is also located on-site, along with a 24 hour concierge service.

Located on Marsham Street in Westminster, residents of Romney House are just a stone's throw from cherished London landmarks including the Houses of Parliament, Westminster Abbey and Tate Britain.

The closest station for residents is St James's Park, which is less than a 10 minute walk away, whilst Victoria's mainline, Tube and bus station is little more than a 15 minute walk away.



These particulars, whilst believed to be accurate are set out as a general outline only for guidance and do not constitute any part of an offer or contract. Intending purchasers should not rely on them as statements of representation of fact, but must satisfy themselves by inspection or otherwise as to their accuracy. No person in this firm's employment has the authority to make or give any representation or warranty in respect of the property.