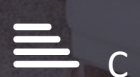
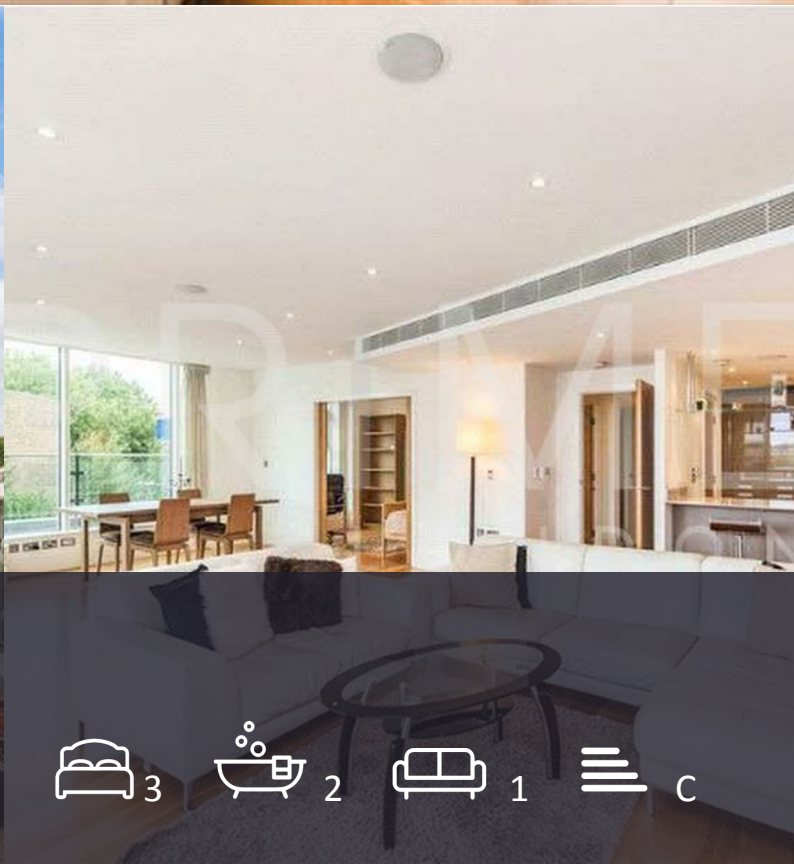




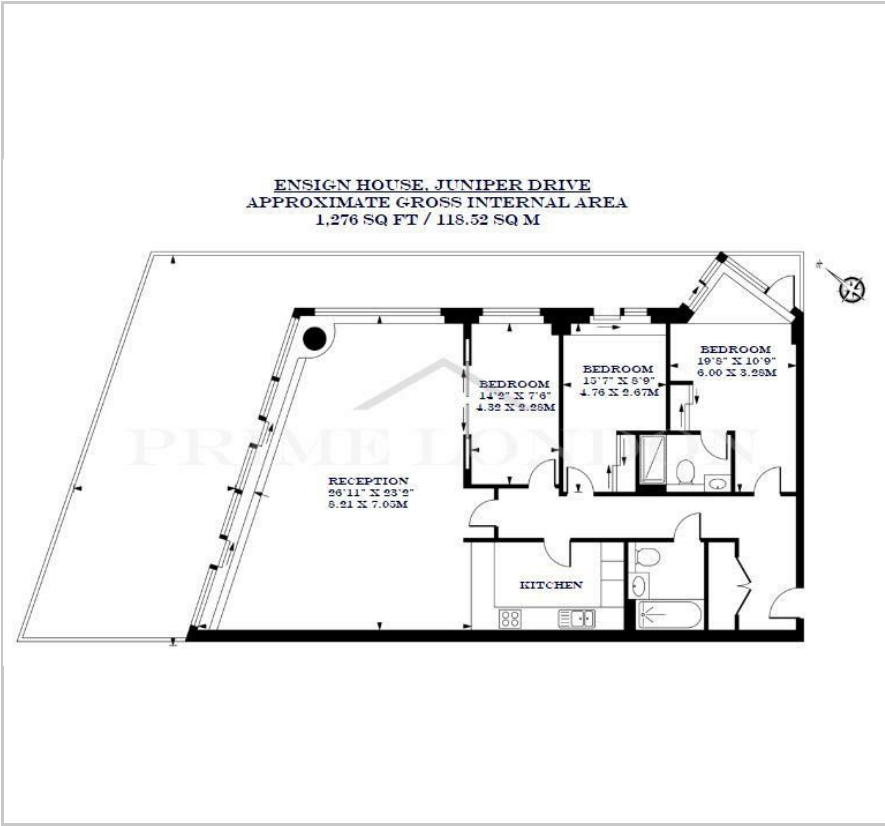
Ensign House

Battersea Reach, SW18 1TR

Asking Price £1,650,000



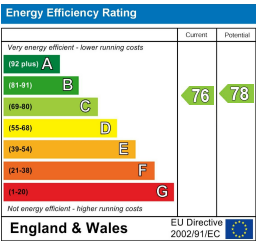
Floor Plan



Area Map



Energy Efficiency Graph



Viewing

By appointment. Contact us on 0207 928 6663 if you wish to arrange a viewing appointment for this property, or require further information.

- Bright three bedroom apartment
- Fantastic views of the River Thames
- Secure parking space
- Underfloor heating, comfort cooling, mood lighting
- Residents' gym
- 24 hour concierge



This bright three bedroom apartment, set at the front of Ensign House, Battersea Reach and facing directly towards the River Thames, offers a great living space and is available for chain free sale through Prime London Residential. The property also comes with a secure parking space.

The 1,276 sq ft / 118.52 sq m property comprises a large open plan reception room with open plan kitchen and breakfast bar, a substantial wrap around private terrace (accessible from all primary rooms), a primary bedroom with an en suite bathroom and a second smaller balcony, two further double bedrooms, and a further modern family bathroom.

The apartment also benefits from having wooden flooring, floor to ceiling windows, underfloor heating, comfort cooling, mood lighting, and access to a 24 hour concierge and a residents' gym.

Battersea Reach is one of London's latest contemporary riverside developments located just over Wandsworth Bridge. Residents have access to Youngs Waterfront Bar & restaurant plus a French patisserie within the development with more amenities scheduled to open soon. Transportation links are excellent with overland trains to Waterloo a few minutes' walk away.



These particulars, whilst believed to be accurate are set out as a general outline only for guidance and do not constitute any part of an offer or contract. Intending purchasers should not rely on them as statements of representation of fact, but must satisfy themselves by inspection or otherwise as to their accuracy. No person in this firms employment has the authority to make or give any representation or warranty in respect of the property.