



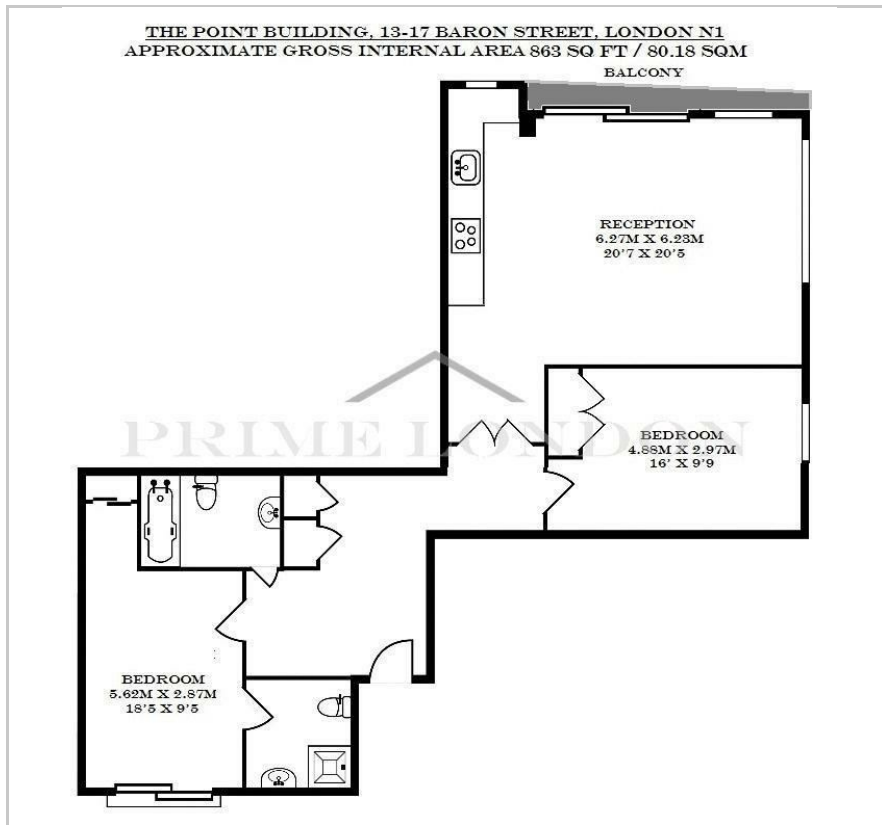
The Point Building

13-17 Baron Street, Angel, N1 9HP

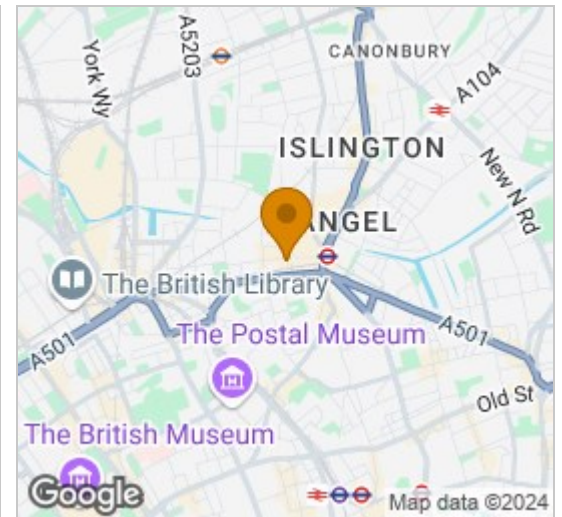
£560 Per Week



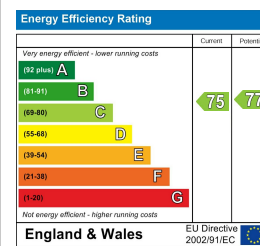
Floor Plan



Area Map



Energy Efficiency Graph



Viewing

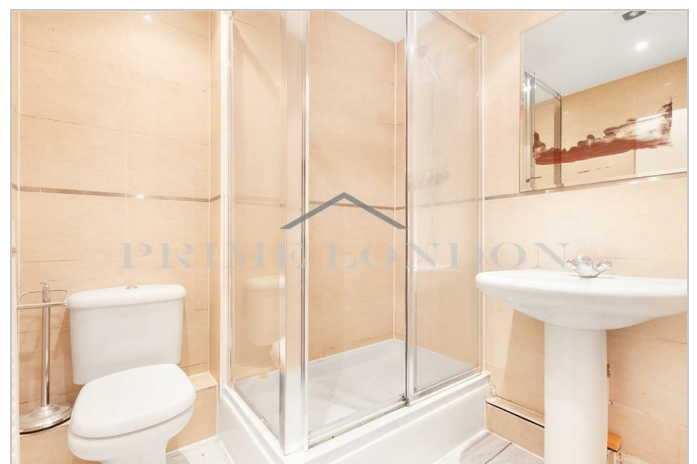
By appointment. Contact us on 0207 928 6663 if you wish to arrange a viewing appointment for this property, or require further information.

- Newly refurbished
- Over 850 sq ft
- Well located
- 5 minute walk to Angel Station
- Junction of Baron Street and White Lion Street
- Unfurnished

An excellently located, bright and spacious two bedroom two bathroom apartment of over 850 sq ft, in a secure building, available for lease on an unfurnished basis through Prime London in the heart of Angel.

The property comprises a bright dual aspect 20' reception with outside access and open-plan kitchen/diner, two double bedrooms (master with en suite), separate family bathroom and wooden flooring.

The property is located on the junction of Baron Street and White Lion Street, with Upper Street close by.



These particulars, whilst believed to be accurate are set out as a general outline only for guidance and do not constitute any part of an offer or contract. Intending purchasers should not rely on them as statements of representation of fact, but must satisfy themselves by inspection or otherwise as to their accuracy. No person in this firm's employment has the authority to make or give any representation or warranty in respect of the property.