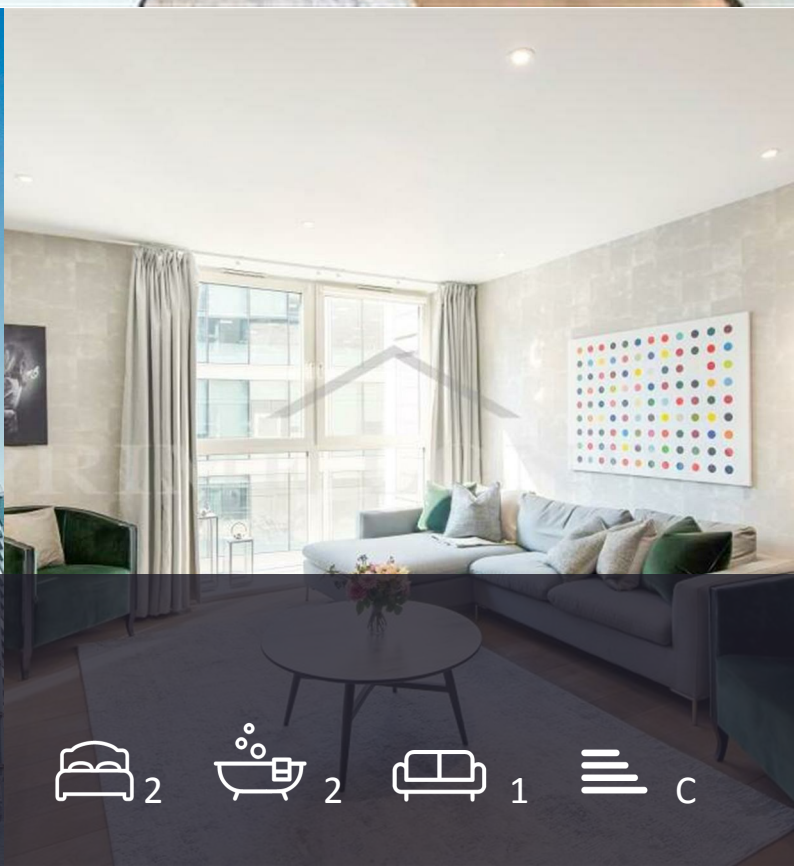


1 Palace Place

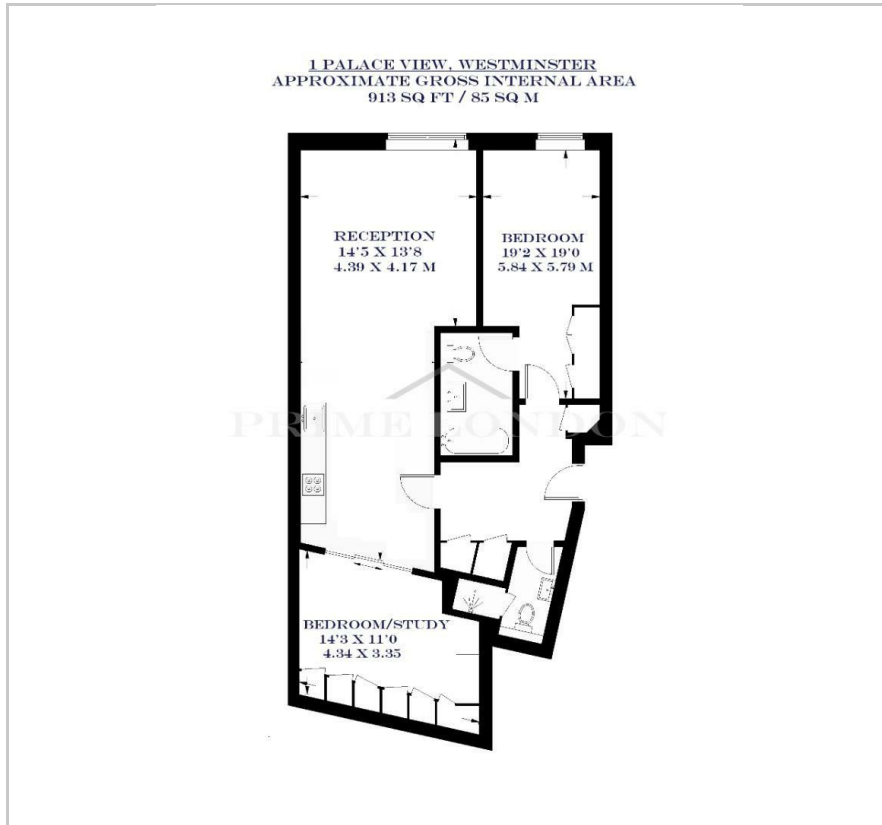
St James, Westminster, SW1E 5BJ

£800 Per Week



2 2 1 C

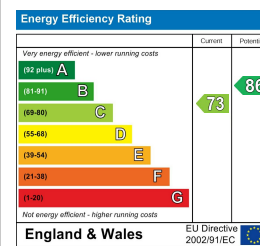
Floor Plan



Area Map



Energy Efficiency Graph



Viewing

By appointment. Contact us on 0207 052 1075 if you wish to arrange a viewing appointment for this property, or require further information.

- Two-bedroom apartment
- 913 sq ft (85 sq m)
- Walk-in wardrobe and ample storage throughout
- Includes air conditioning and underfloor heating
- Located moments away from Green Park and St James Park
- 24/7 concierge



This luxurious and modern two-bedroom apartment, located in the prestigious One Palace Place development, is available for lease through Prime London.

The property totals 913 sq ft (85 sq m) and features a contemporary and well-lit open-concept kitchen and living space, a primary double bedroom with an en-suite, a secondary bedroom or study, and a separate shower room. The flat is modern and offers ample storage, including an expansive walk-in closet. Additionally, the property benefits from lift access, air conditioning, underfloor heating, as well as a 24-hour concierge.

The apartment is ideally located moments away from London's famous Green Park and St James's Park. Nearby transport links include Victoria Underground Station (Circle, District, and Victoria lines), James's Park Underground Station (Circle and District lines), and Westminster Underground Station (Circle, District, and Jubilee lines), all approximately 0.3 miles away.



These particulars, whilst believed to be accurate are set out as a general outline only for guidance and do not constitute any part of an offer or contract. Intending purchasers should not rely on them as statements of representation of fact, but must satisfy themselves by inspection or otherwise as to their accuracy. No person in this firm's employment has the authority to make or give any representation or warranty in respect of the property.