



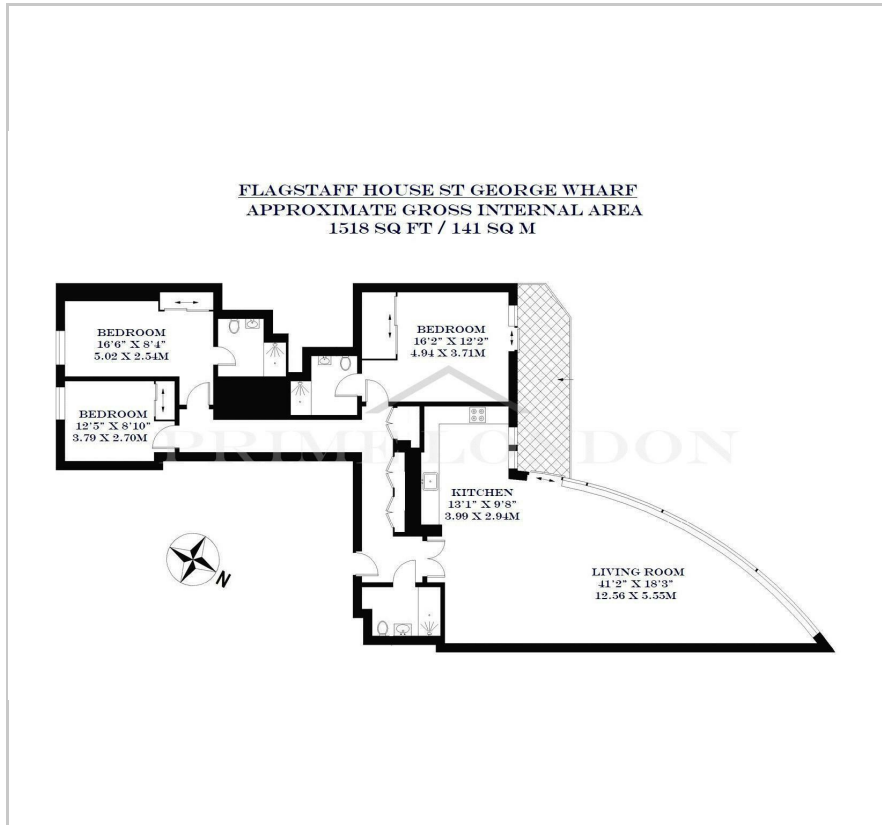
Flagstaff House

St George Wharf, Vauxhall, SW8 2LZ

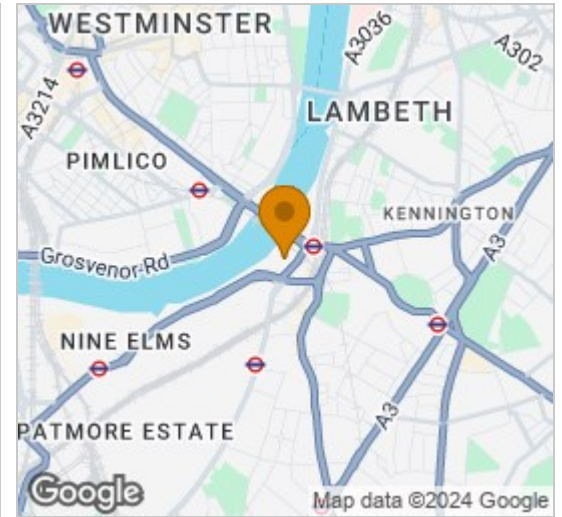
£1,500 Per Week



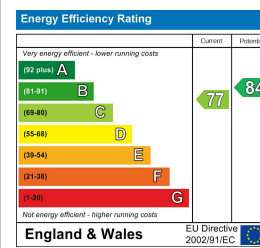
Floor Plan



Area Map



Energy Efficiency Graph

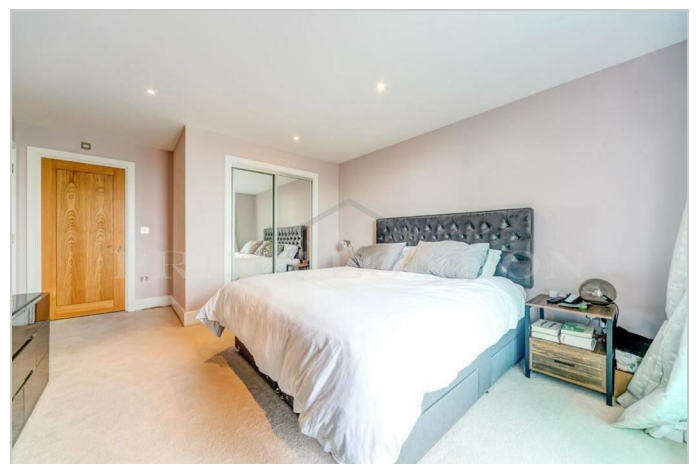
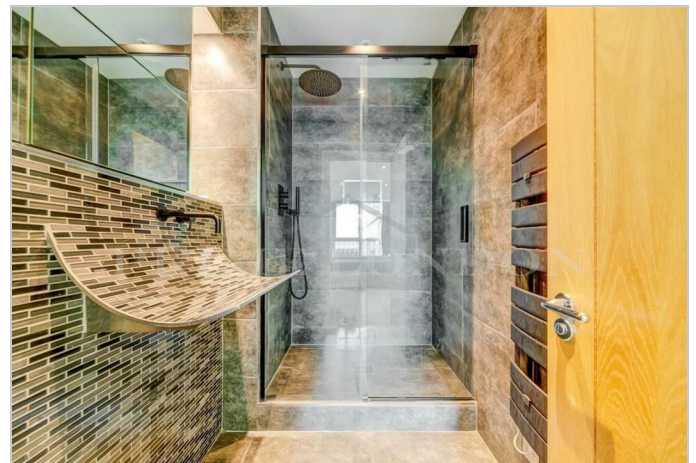


Viewing

By appointment. Contact us on 0207 928 6663 if you wish to arrange a viewing appointment for this property, or require further information.

- Three bed three bath with 1,518 sq ft / 141 sqm balcony
- Direct views of the River Thames
- Excellent transport links
- Part furnished
- 24 hour concierge

With fantastic views of the River Thames, this 1,518 sq ft / 141 sq m three bedroom three bathroom apartment, set in an excellent position within St George Wharf, is available to rent through Prime London. This bright and modern apartment comprises a huge semi-open plan reception with dining area and modern fully fitted kitchen, a private balcony overlooking the River Thames, three double bedrooms, and three modern bathrooms (two of which are en suite). The property also benefits from having wooden flooring in the reception and floor to ceiling windows. This apartment benefits from the fantastic transport links afforded by this very well kept complex by The River Thames. St George Wharf offers on site riverside bars and restaurants such as Waterfront London, The Riverside, Four Degree and Pop Art Sushi as well as direct access to Vauxhall Underground Station on the Victoria Line. For additional convenience other on site outlets include Tesco Express, Pret a Manger, Hudson's Dry Cleaners, Riverside Medical Centre & Dental Spa and more.



These particulars, whilst believed to be accurate are set out as a general outline only for guidance and do not constitute any part of an offer or contract. Intending purchasers should not rely on them as statements of representation of fact, but must satisfy themselves by inspection or otherwise as to their accuracy. No person in this firm's employment has the authority to make or give any representation or warranty in respect of the property.