

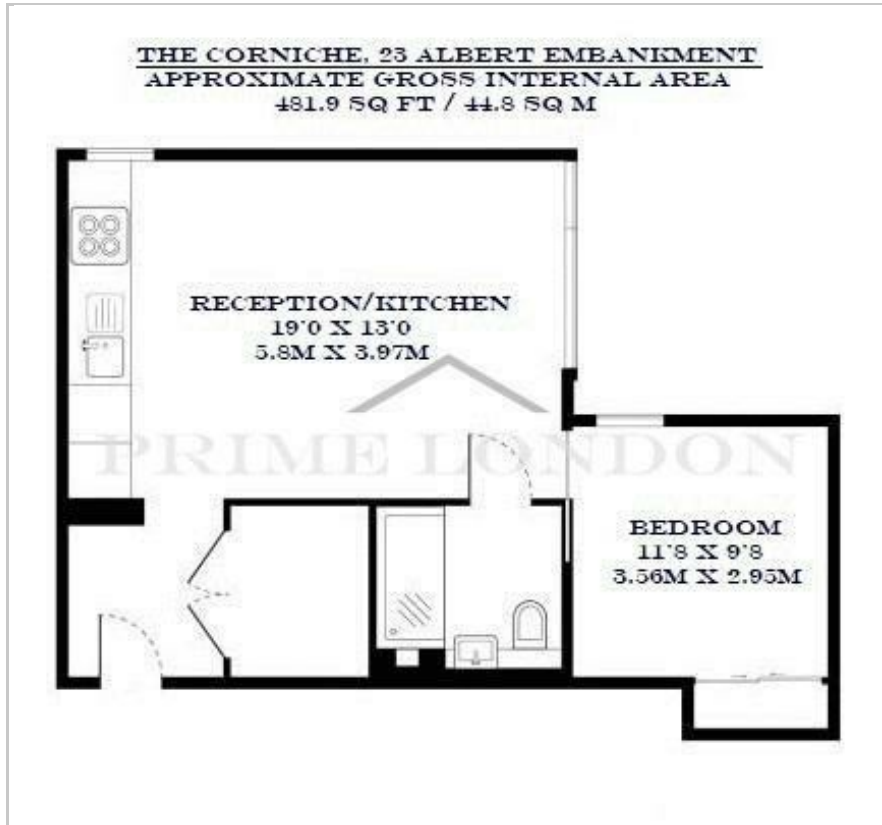
The Corniche

23 Albert Embankment, SE1 7GG

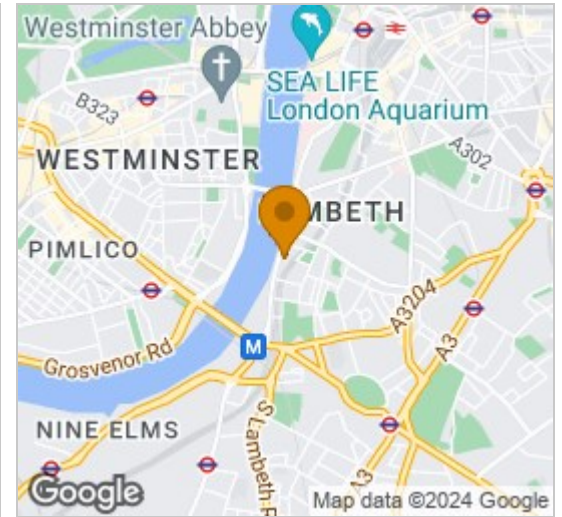
£630 Per Week



Floor Plan



Area Map



Energy Efficiency Graph



Viewing

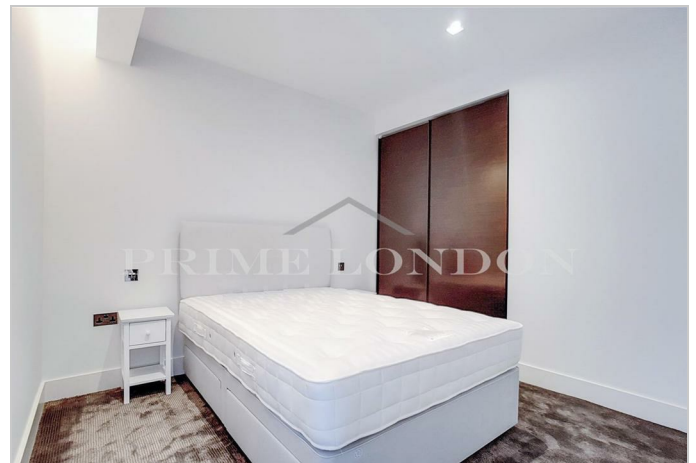
By appointment. Contact us on 0207 928 6663 if you wish to arrange a viewing appointment for this property, or require further information.

- Modern river facing ▪ Fully furnished apartment
- High specification apartment ▪ Gym, spa, pool and cinema
- Residents' club and bar with ▪ 24 Hour concierge roof terrace

This modern and high specification one bedroom apartment with river views, exquisite details, and excellent finishes, comes fully furnished and is available to rent through Prime London in The Corniche, 23 Albert Embankment.

Located in an enviable position on the bank of the River Thames, The Corniche (designed by Foster & Partners) captures some of London's most exquisite views, not only of the Houses of Parliament and the River Thames, but also the Tate Britain, London Eye and the City.

The development includes extensive residents facilities including a gym, spa, pool and cinema, as well as a residents' club and bar with roof terrace.



These particulars, whilst believed to be accurate are set out as a general outline only for guidance and do not constitute any part of an offer or contract. Intending purchasers should not rely on them as statements of representation of fact, but must satisfy themselves by inspection or otherwise as to their accuracy. No person in this firm's employment has the authority to make or give any representation or warranty in respect of the property.