

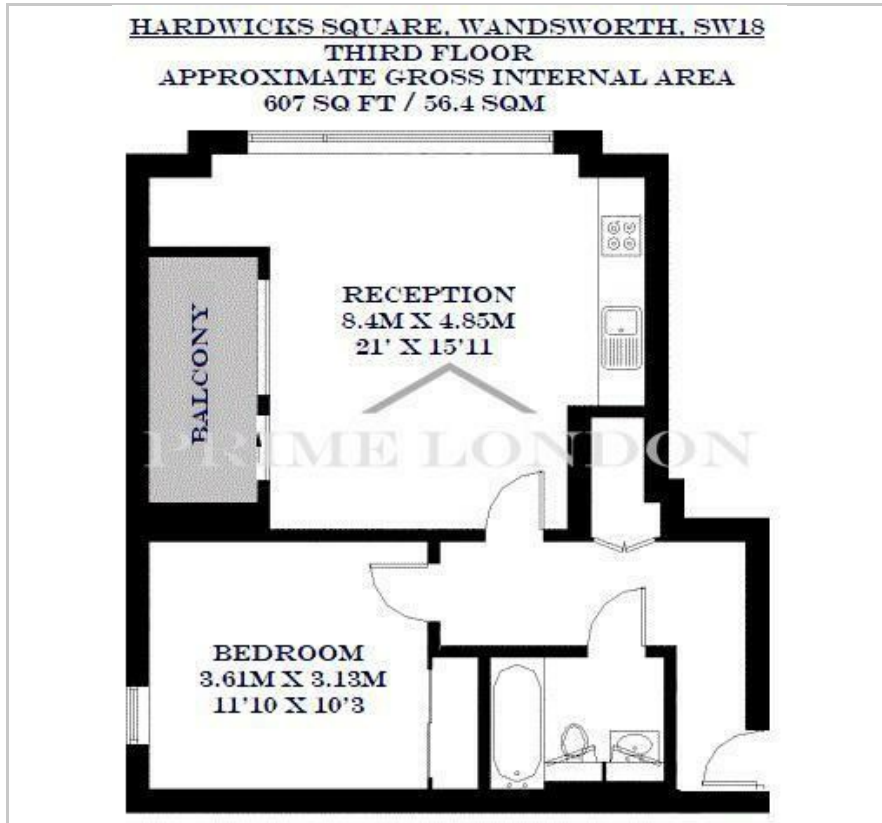


Hardwicks Square

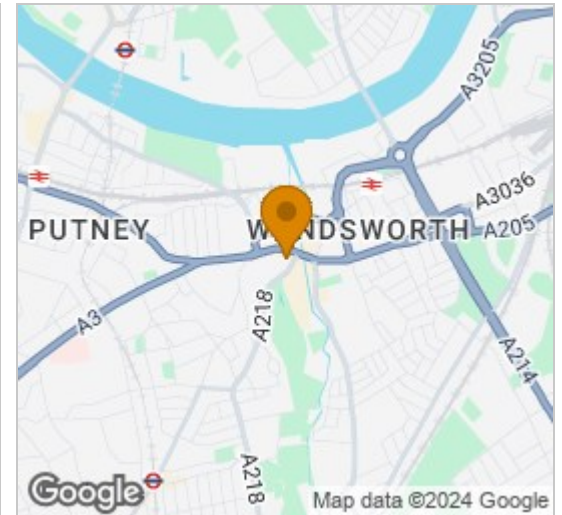
Wandsworth, SW18 4HU

£400 Per Week

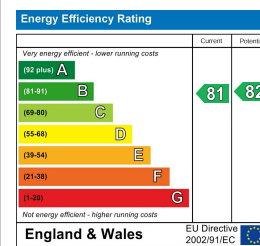
Floor Plan



Area Map



Energy Efficiency Graph



Viewing

By appointment. Contact us on 0207 928 6663 if you wish to arrange a viewing appointment for this property, or require further information.

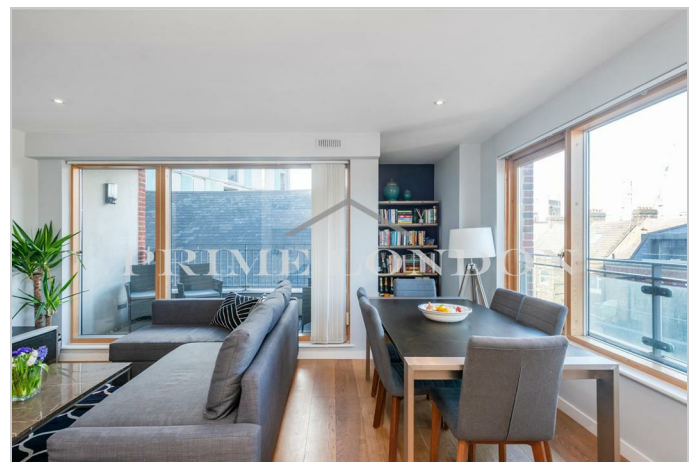
- Large furnished one bedroom apartment (607 sq ft/56.4 sq m)
- Third Floor
- Excellent location by Southside Shopping Centre
- Modern apartment block
- Local bars and restaurants nearby
- Open plan kitchen and living room
- Underfloor heating
- 10 minute bus journey to Clapham Junction Centre
- Walking distance of Wandsworth Town Station

A contemporary and spacious one double bedroom apartment within this sought-after development in the lively hub of Wandsworth.

Hardwicks Square is situated near to King George's Park and adjacent to Southside Shopping Centre. It is surrounded by local schools and services and an eclectic mix of shops, pubs, and restaurants.

Wandsworth is well served by both trains and buses, making it an easy commute into central London. Wandsworth Town station (zone 2) is 0.8 miles away and connects to Waterloo directly, with services taking under 15 minutes.

We are obliged to inform prospective tenants that the owner of this property is associated to Prime London



These particulars, whilst believed to be accurate are set out as a general outline only for guidance and do not constitute any part of an offer or contract. Intending purchasers should not rely on them as statements of representation of fact, but must satisfy themselves by inspection or otherwise as to their accuracy. No person in this firm's employment has the authority to make or give any representation or warranty in respect of the property.