



## Gladwin Tower

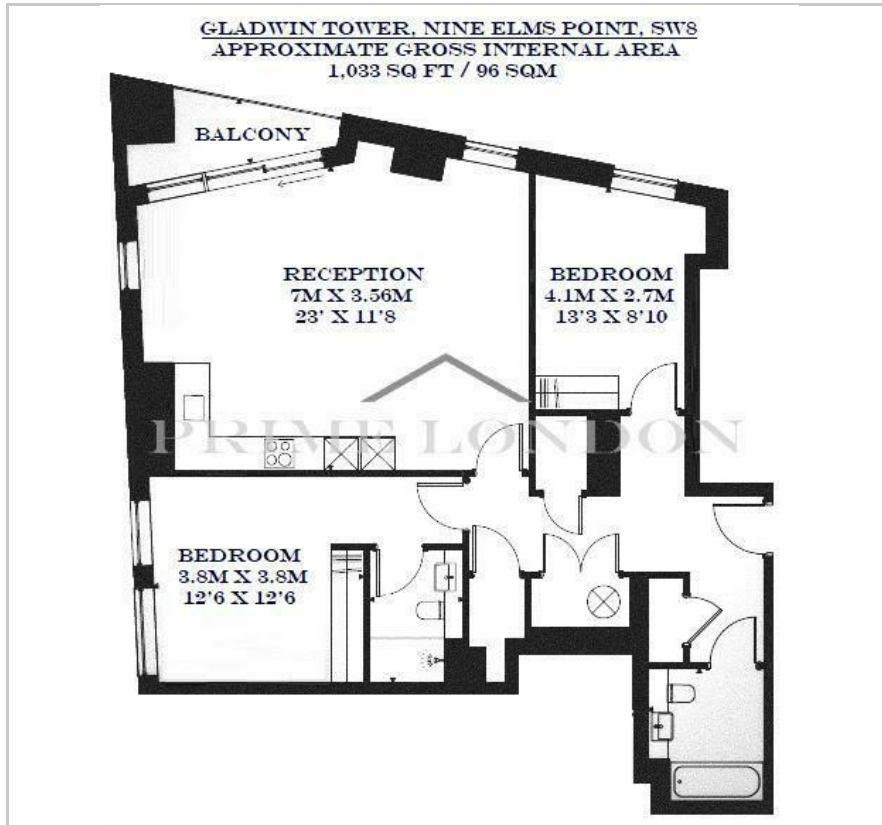
Nine Elms Point, SW8 2FU

£576 Per Week

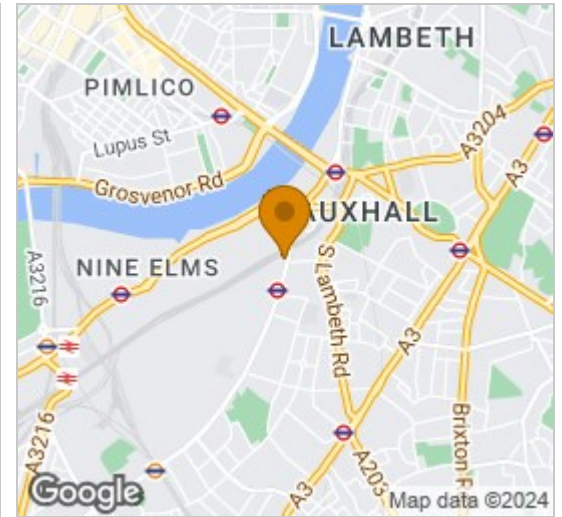
2 2 1 B



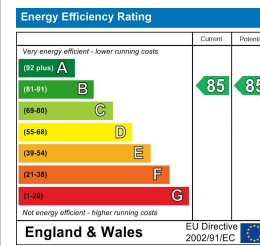
## Floor Plan



## Area Map



## Energy Efficiency Graph



## Viewing

By appointment. Contact us on 0207 928 6663 if you wish to arrange a viewing appointment for this property, or require further information.

- 1,033 sq ft
- Exceptional dual aspect views
- 24 hour concierge service
- High floor apartment
- High specification throughout
- Fitness suite



An expansive 1,033 sq ft high floor apartment, offering exceptional dual aspect views and a high specification throughout, available exclusively through Prime London.

Nine Elms Point is situated at the forefront of Europe's largest regeneration scheme, and benefits from landscaped courtyards, elevated parades, a fitness suite and a 24 hour concierge service.

Nine Elms Point is conveniently located beside the Nine Elms Northern Line tube station and above a flagship 80,000 sq ft Sainsbury's. Vauxhall station is under half a mile away, you you can be in Waterloo in 4 minutes,

Oxford Circus in 9 minutes or London King's Cross St. Pancras in 13 minutes. Gatwick, Heathrow and London City Airport are all less than an hour's commute away.



These particulars, whilst believed to be accurate are set out as a general outline only for guidance and do not constitute any part of an offer or contract. Intending purchasers should not rely on them as statements of representation of fact, but must satisfy themselves by inspection or otherwise as to their accuracy. No person in this firms employment has the authority to make or give any representation or warranty in respect of the property.