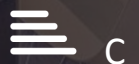
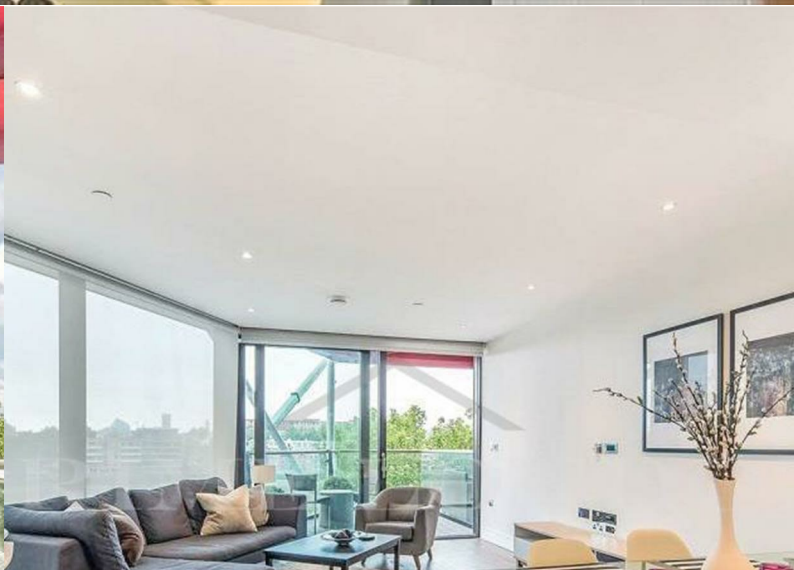




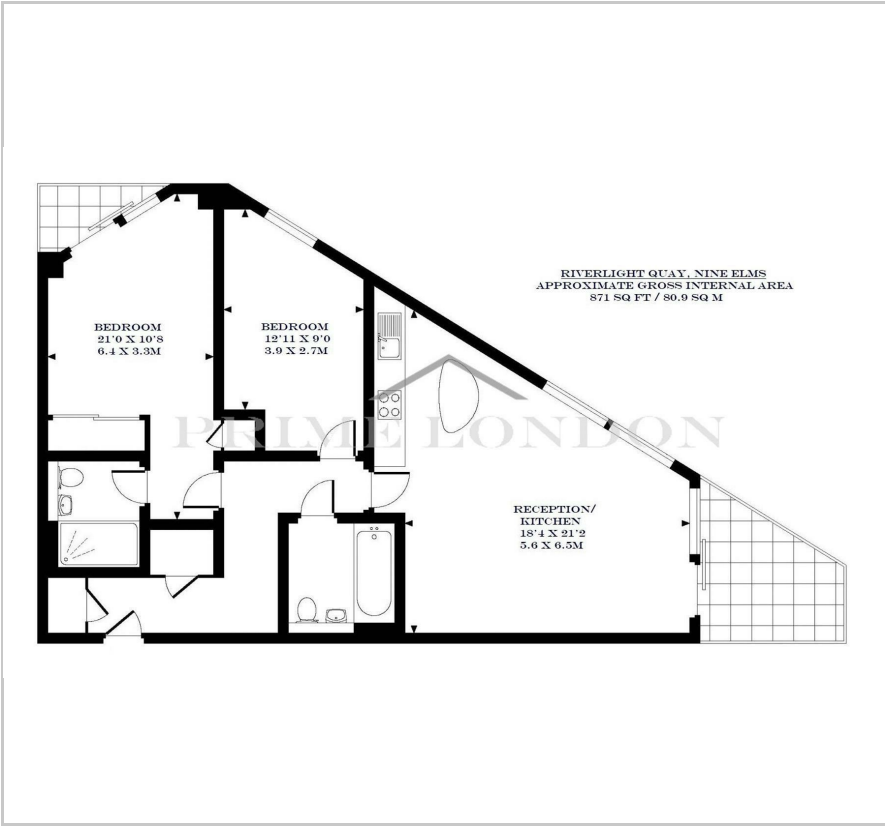
One Riverlight Quay

Nine Elms, SW8 5AU

£888 Per Week



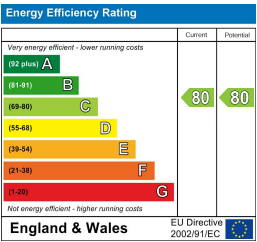
Floor Plan



Area Map



Energy Efficiency Graph



Viewing

By appointment. Contact us on 0207 928 6663 if you wish to arrange a viewing appointment for this property, or require further information.

- Two bedroom apartment
- 871 sq ft / 80.9 sqm
- Direct views of the River Thames
- Two balconies
- Resident's gym, pool, jacuzzi, sauna and golf room
- 24 hour concierge



In the front row position of One Riverlight Quay, on the water's edge and with fantastic views of the River Thames, this beautiful property comes is available for rent through Prime London.

The property also comes with a secure parking space.

This apartment offers luxurious finishes throughout the 871 sq ft / 80.9 sq m of living space, which further features two balconies, an en suite to master, comfort cooling and under-floor heating.

An exclusive on-site resident's Clubhouse offers a unique third space between home and work which to socialise, exercise and be entertained, from a private screening room to virtual golf facilities; a residents club lounge and library and a 15m swimming pool, state-of-the-art gymnasium and spa.

Riverlight Quay offers a vibrant mix of leisure and retail facilities at street level, including cafes, bar and restaurant, grocery shopping and creche.



These particulars, whilst believed to be accurate are set out as a general outline only for guidance and do not constitute any part of an offer or contract. Intending purchasers should not rely on them as statements of representation of fact, but must satisfy themselves by inspection or otherwise as to their accuracy. No person in this firm's employment has the authority to make or give any representation or warranty in respect of the property.