

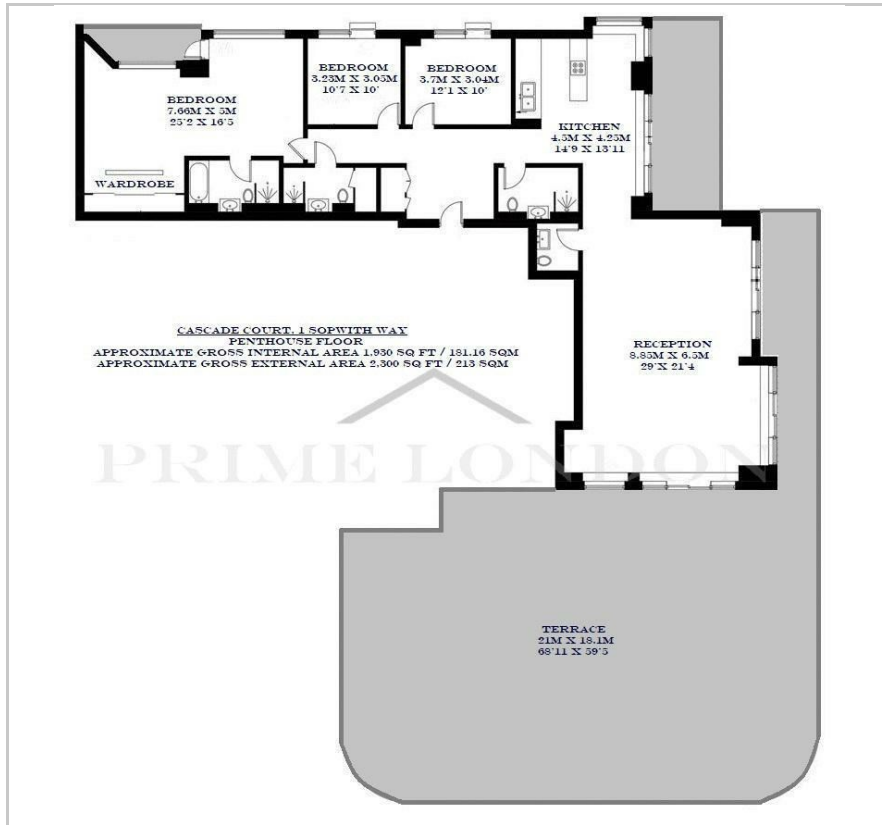
Cascade Court

Vista Chelsea Bridge Wharf, SW8 4NQ

£2,250 Per Week



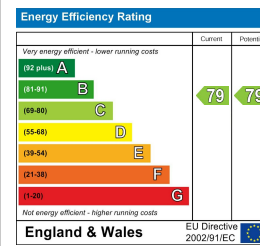
Floor Plan



Area Map



Energy Efficiency Graph



Viewing

By appointment. Contact us on 0207 928 6663 if you wish to arrange a viewing appointment for this property, or require further information.

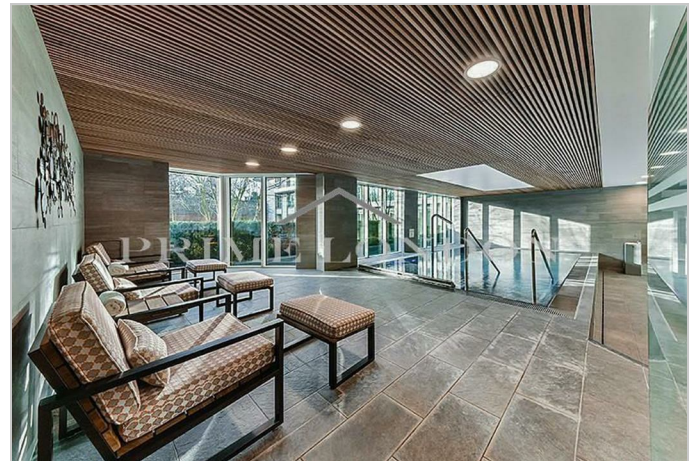
- Extraordinary penthouse ▪ Totalling over 4,000 sq ft apartment
- Largest private terrace ever ▪ Furnished or unfurnished for lease in Nine Elms basis
- 360 degree views from the top floor ▪ Residents' leisure facilities and 24 concierge

An extraordinary penthouse apartment totalling over 4,000 sq ft, with the largest private terrace ever for lease in Nine Elms, available on an unfurnished basis through Prime London.

The property is one of a kind, with 360 degree views from the top floor over Battersea Park, Nine Elms and the city beyond.

Cascade Court at Vista is the first phase in this contemporary development (with residents' leisure facilities and 24 concierge) overlooking Battersea Park, offering bright apartments with magnificent large windows and superb finishes, quality engineered timber flooring, kitchens with subtle satin finishes and beautiful stone work surfaces, high specification bathrooms and bedrooms with a fusion of subtle lighting, muted tones and soft carpeting.

The innovative and striking architecture has been conceived by world-leading architects Scott Brownrigg, to incorporate extensive outdoor landscaping and feature terraces whilst fitting into the beautiful surroundings of Battersea Park.



These particulars, whilst believed to be accurate are set out as a general outline only for guidance and do not constitute any part of an offer or contract. Intending purchasers should not rely on them as statements of representation of fact, but must satisfy themselves by inspection or otherwise as to their accuracy. No person in this firm's employment has the authority to make or give any representation or warranty in respect of the property.