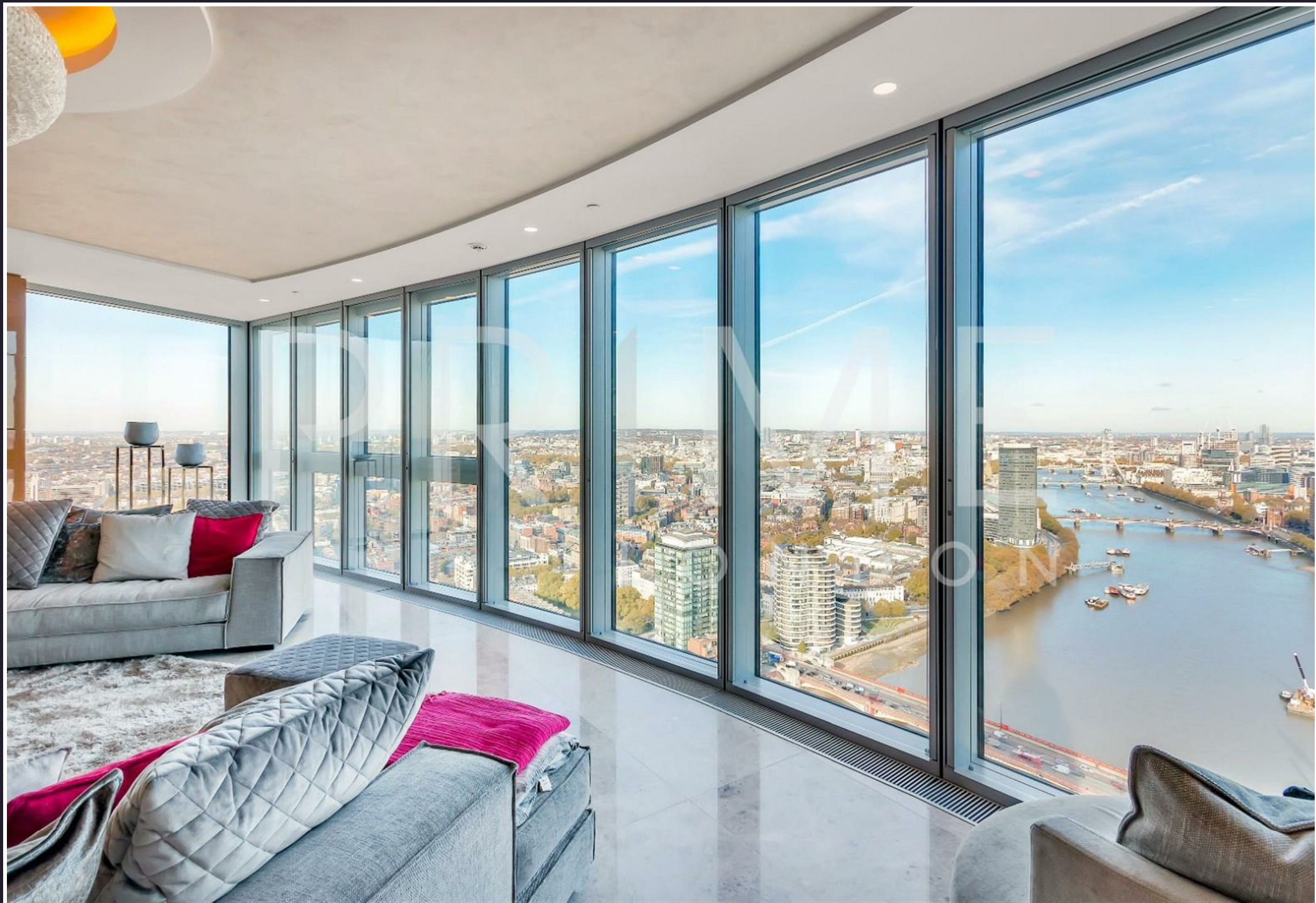




The Tower, One St. George Wharf, SW8 2BW

£3,461 Per Week





The Tower

One St. George Wharf, SW8 2BW

- Elite Apartment
- Extensive Lateral Space
- Exquisite Finishes and Integrated Media
- Resident Gym, Pool & Sauna Facilities
- Astounding Panorama
- 3,360 sq ft (315.12 sqm)
- Concierge Service & Valet Parking
- On Site Riverside Bars & Restaurants

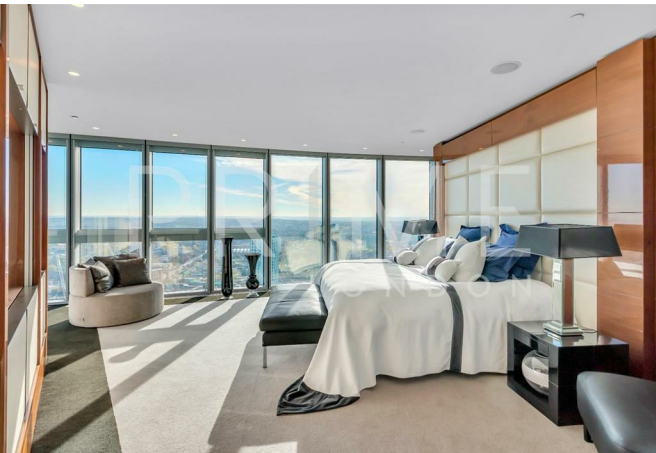
An elite apartment with an astounding panorama of London, bespoke designed and with extensive lateral space totalling some 3,360 sq ft (315.12 sqm), available for lease exclusively through Prime London.

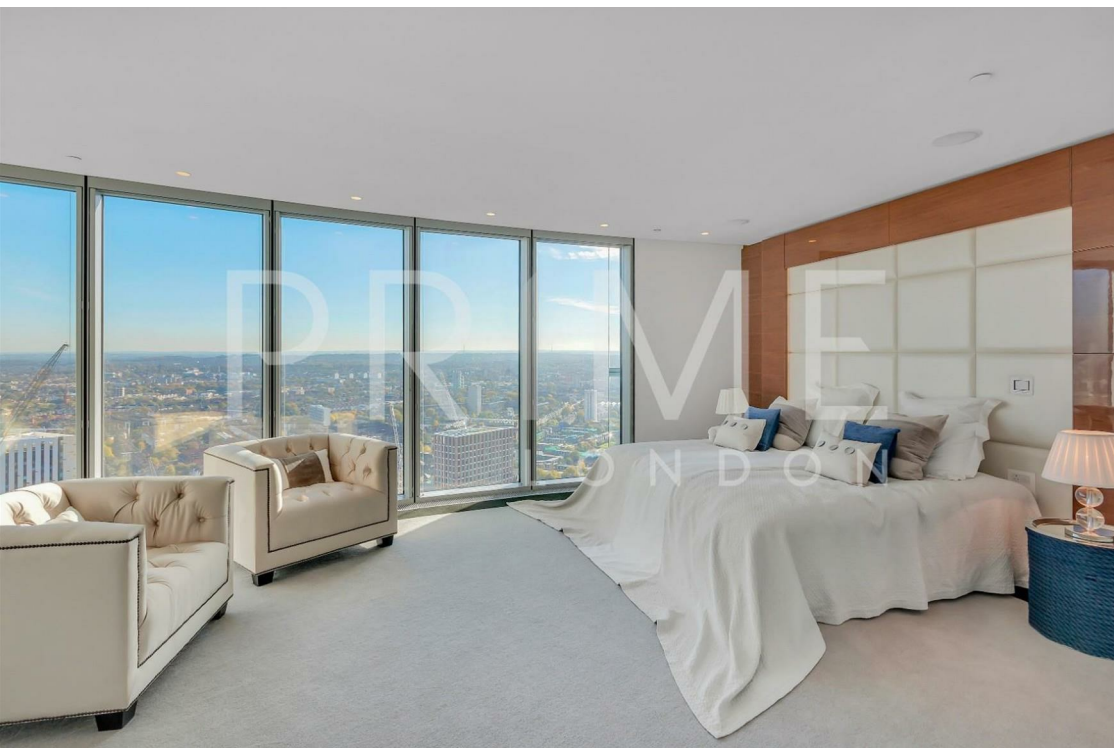
The apartment benefits from exquisite finishes and integrated media and room comfort controls, and commences with a beautifully lit entrance, leading to the reception room and expansive separate eat in kitchen/dining room.

The master bedroom incorporates a walk-in dressing area and en suite (bath and shower), and two further bedrooms add an en suite, further shower room and extensive integrated storage.

Amenities at The Tower include front door concierge service with valet parking, first floor gym, pool and sauna facilities as well as a private cinema. St George Wharf offers on site riverside bars and restaurants such as Waterfront London, The Riverside, Four Degree and Pop Art Sushi.

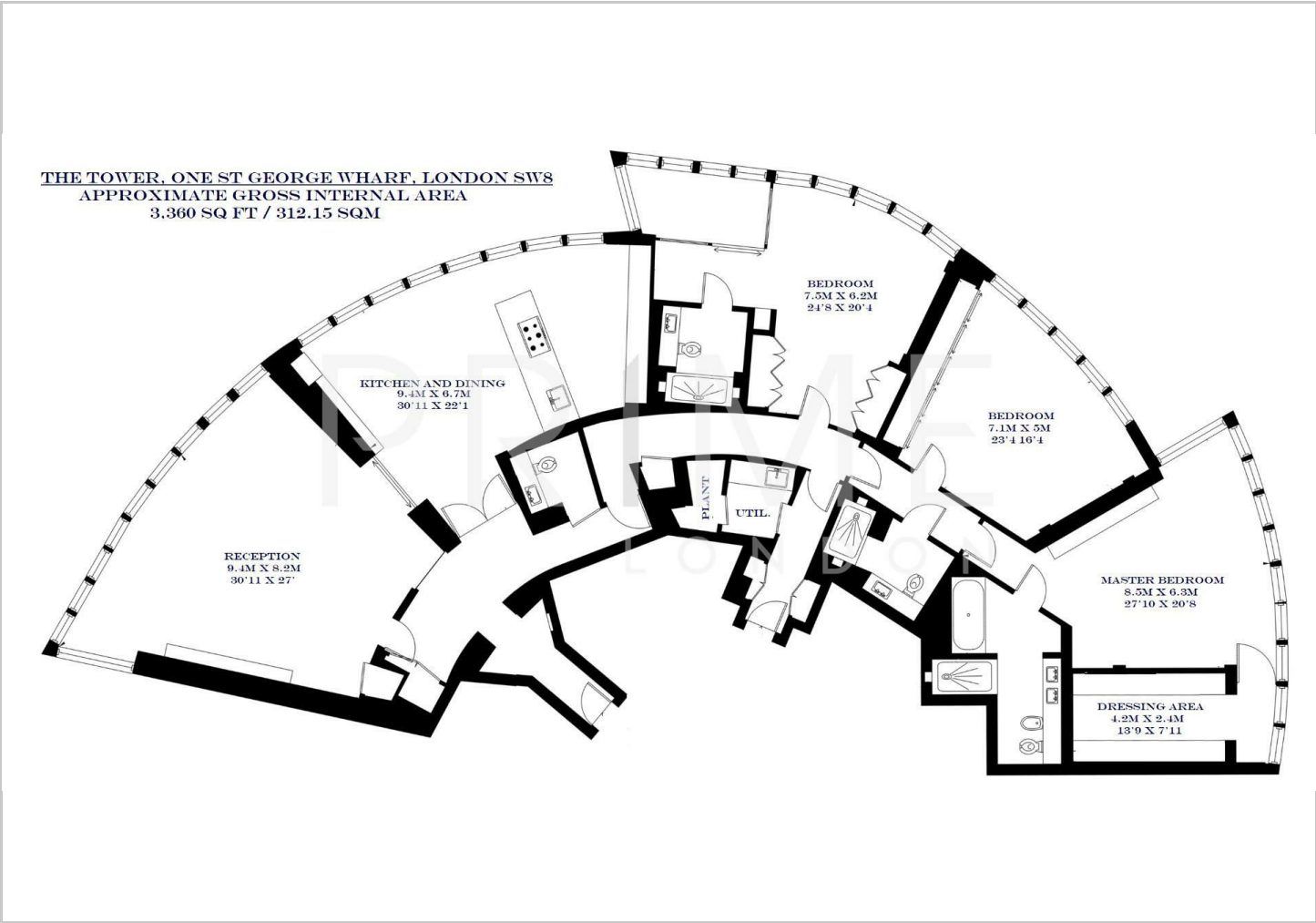
For additional convenience other on site outlets include Tesco Express, Pret a Manger, Hudson's Dry Cleaners, Riverside Medical Centre, Dental Spa and more.







Floor Plans

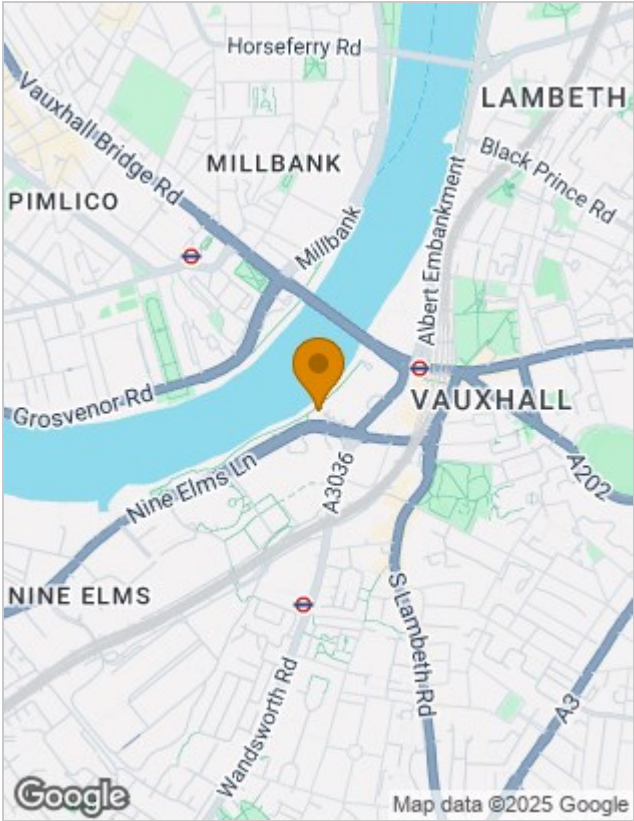


Viewing

By appointment. Contact us if you wish to arrange a viewing appointment for this property, or require further information.

The particulars are set out as a general outline only for the guidance of intended purchasers or lessees, and do not constitute, any part of a contract. Nothing in these particulars shall be deemed to be a statement that the property is in good structural condition or otherwise nor that any of the services, appliances, equipment or facilities are in good working order. Purchasers should satisfy themselves of this prior to purchasing.

Location Map



Energy Performance Graph

