



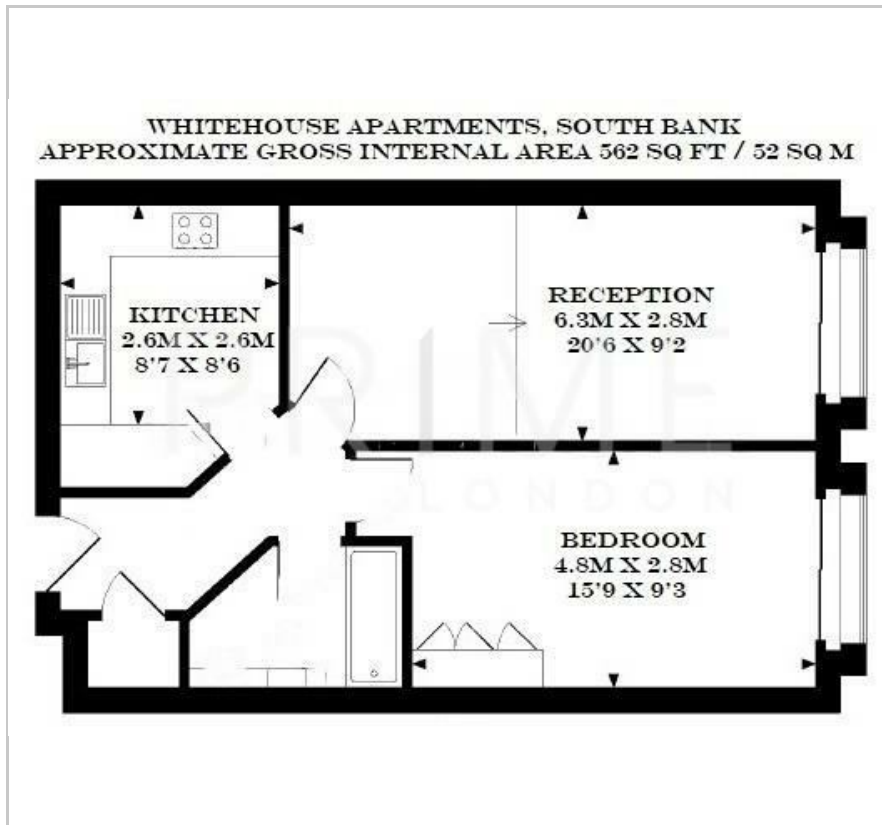
Whitehouse Apartments

South Bank, SE1 8YT

£600 Per Week



Floor Plan



Area Map



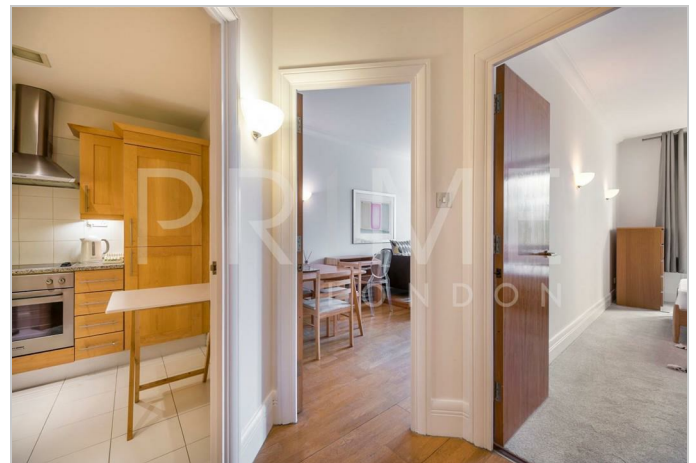
Energy Efficiency Graph



Viewing

By appointment. Contact us on 0207 928 6663 if you wish to arrange a viewing appointment for this property, or require further information.

- 562 sq ft (52 sqm)
- Superior on-site facilities
- Gymnasium, indoor heated swimming pool, spa
- Bright garden aspect
- 24 hour concierge
- Expansive rooftop terrace



Offering 562 sq ft (52 sqm) of living space and a bright garden aspect, this exceptional one bedroom apartment is available exclusively through Prime London within this iconic development on London's South Bank.

The property further comprises a large bedroom with vast integrated storage, separate fully fitted kitchen, generous bathroom and wooden flooring.

Residents of the Whitehouse Apartments enjoy exclusive use of the superior on-site facilities, namely a well maintained courtyard garden, gymnasium, indoor heated swimming pool, spa and expansive rooftop terrace.

Within walking distance of the South Bank's many amenities as well as Waterloo and Westminster stations, the location provides direct transport links into the City and West End.



These particulars, whilst believed to be accurate are set out as a general outline only for guidance and do not constitute any part of an offer or contract. Intending purchasers should not rely on them as statements of representation of fact, but must satisfy themselves by inspection or otherwise as to their accuracy. No person in this firm's employment has the authority to make or give any representation or warranty in respect of the property.