



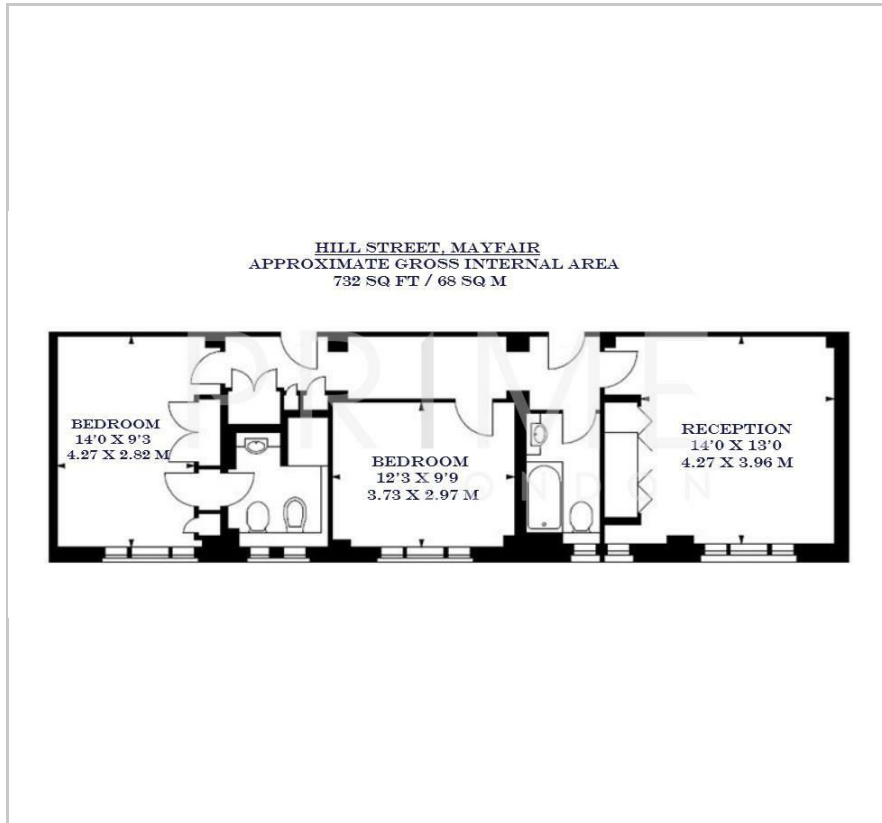
39 Hill Street

Mayfair, W1J 5NA

£1,260 Per Week



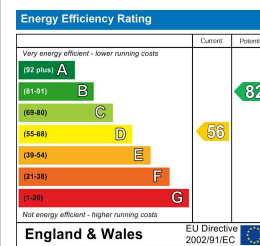
Floor Plan



Area Map



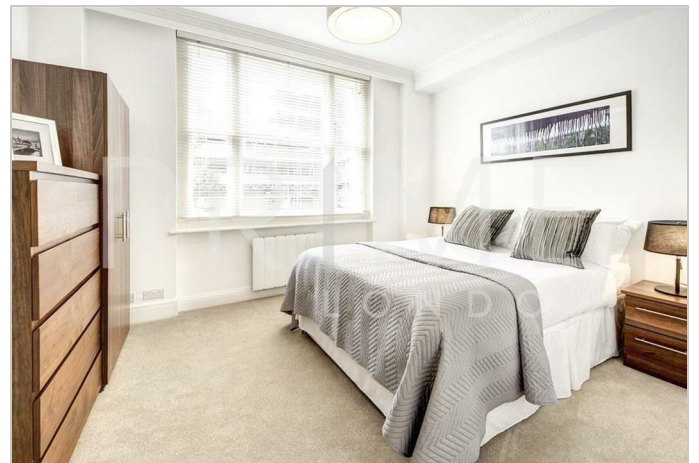
Energy Efficiency Graph



Viewing

By appointment. Contact us on 0207 052 1075 if you wish to arrange a viewing appointment for this property, or require further information.

- Stylish two bedroom 732 sq ft (68 sqm) apartment in the heart of Mayfair
- Private gated communal On-site building manager garden
- Close proximity to New Bond Street Underground links: Green Park and Bond Street stations



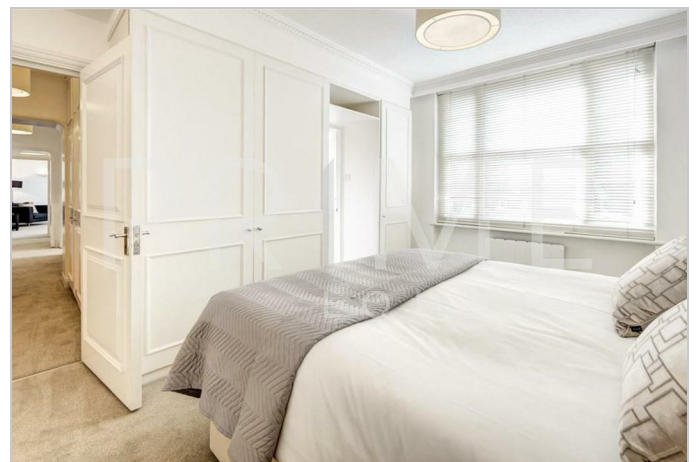
This modern two bedroom apartment, situated in the heart of London's fashionable Mayfair, is available for lease through Prime London.

Totalling 732 sq ft (68 sq m), the property comprises a large living room, two bedrooms with ample storage, a modern bathroom, and a kitchen with access to a private gated communal garden.

Residents benefit from an on-site building manager and lift service.

Hill Street is situated in one of London's most desirable areas, positioned to the east of Hyde Park and to the north of Piccadilly. It neighbours the iconic Berkeley Square and is conveniently close to a plethora of amenities, restaurants, and flagship designer stores found along Mount Street, New Bond Street, South Molton Street, and their surrounding areas.

Local transport connections include Green Park (Piccadilly, Victoria and Jubilee lines), located 0.3 miles from the property and Bond Street (Central and Jubilee lines), located 0.5 miles from the property.



These particulars, whilst believed to be accurate are set out as a general outline only for guidance and do not constitute any part of an offer or contract. Intending purchasers should not rely on them as statements of representation of fact, but must satisfy themselves by inspection or otherwise as to their accuracy. No person in this firm's employment has the authority to make or give any representation or warranty in respect of the property.