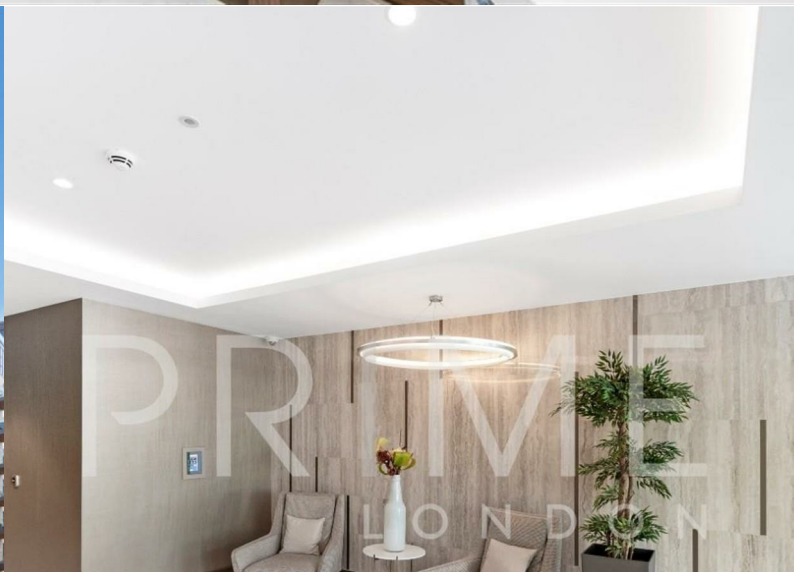


## Discovery House

Juniper Drive, Battersea Reach, SW18 1XY

£525 Per Week



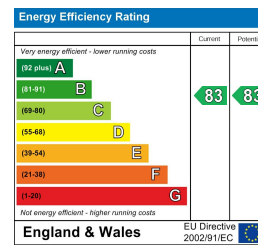
## Floor Plan



## Area Map



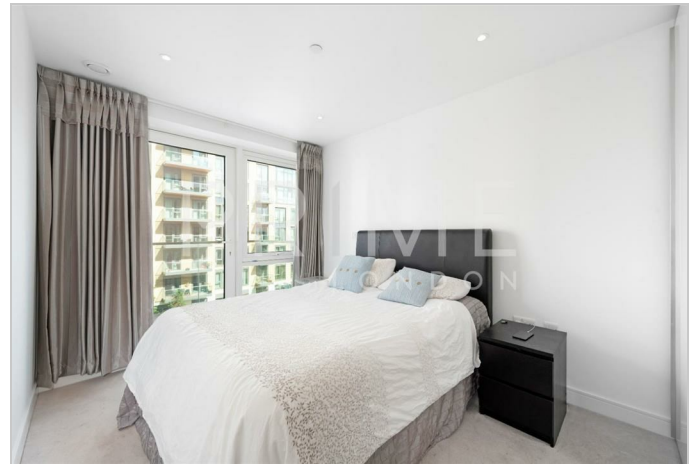
## Energy Efficiency Graph



## Viewing

By appointment. Contact us on 0207 928 6663 if you wish to arrange a viewing appointment for this property, or require further information.

- High specification apartment
- Sizeable outdoor space 540 sq ft
- Luxurious interior finishes
- Integrated storage
- On-site amenities
- 24 hour concierge service



A bright high specification apartment with sizeable outdoor space, available for lease exclusively through Prime London.

This apartment features luxurious interior finishes, an excellent reception perfect for entertaining, high specification kitchen and double bedroom with integrated storage.

Battersea Reach itself provides many on-site amenities, including restaurants and bars, a residents only fitness suite, convenience shopping and a 24 hour concierge service.



These particulars, whilst believed to be accurate are set out as a general outline only for guidance and do not constitute any part of an offer or contract. Intending purchasers should not rely on them as statements of representation of fact, but must satisfy themselves by inspection or otherwise as to their accuracy. No person in this firm's employment has the authority to make or give any representation or warranty in respect of the property.