



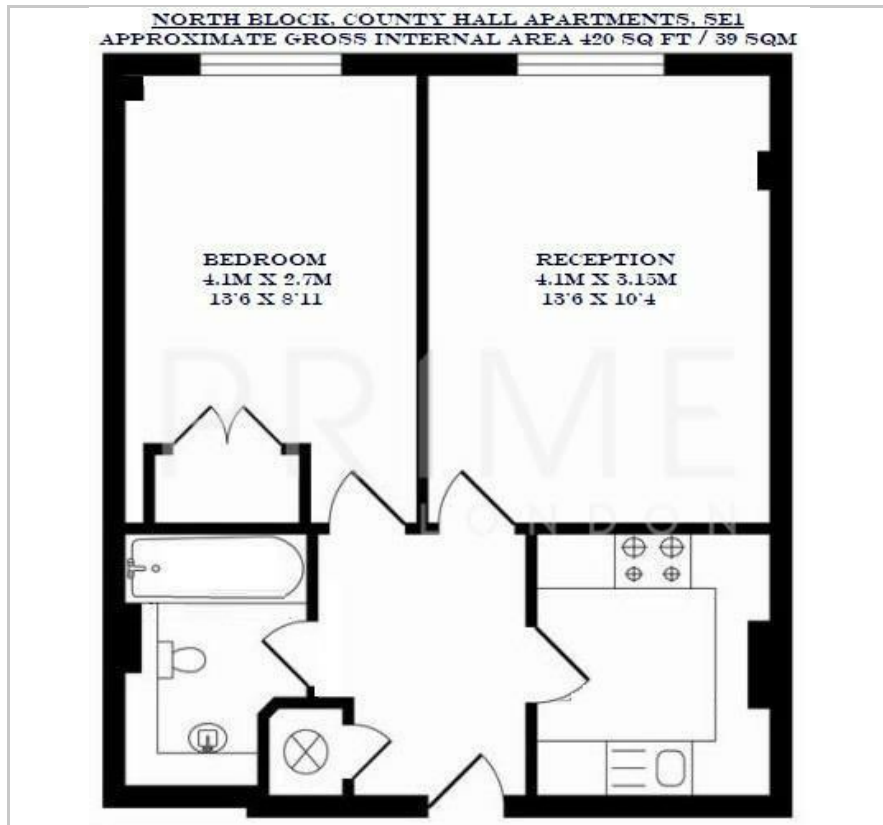
## North Block

County Hall Apartments, SE1 7PN

£525 Per Week



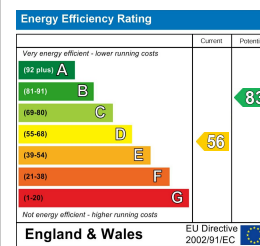
## Floor Plan



## Area Map



## Energy Efficiency Graph



## Viewing

By appointment. Contact us on 0207 928 6663 if you wish to arrange a viewing appointment for this property, or require further information.

- 420 sq ft (39 sqm)
- Quiet and serene position
- 24 hour concierge service
- Indoor heated swimming pool, gymnasium and spa



A refurbished one bedroom apartment of 420 sq ft (39 sqm), available for lease exclusively through Prime London in County Hall Apartments, South Bank.

This property has a quiet and serene position, facing internally onto the courtyard, offering a peaceful environment in this very central location.

County Hall itself is located immediately by the London Eye, and residents enjoy the exclusive use of the on-site facilities, namely a 24 hour concierge service and leisure complex complete with indoor heated swimming pool, gymnasium and spa.

The development is ideally situated for travel into the City, Canary Wharf and West End as Waterloo and Westminster stations are close by.



These particulars, whilst believed to be accurate are set out as a general outline only for guidance and do not constitute any part of an offer or contract. Intending purchasers should not rely on them as statements of representation of fact, but must satisfy themselves by inspection or otherwise as to their accuracy. No person in this firm's employment has the authority to make or give any representation or warranty in respect of the property.