



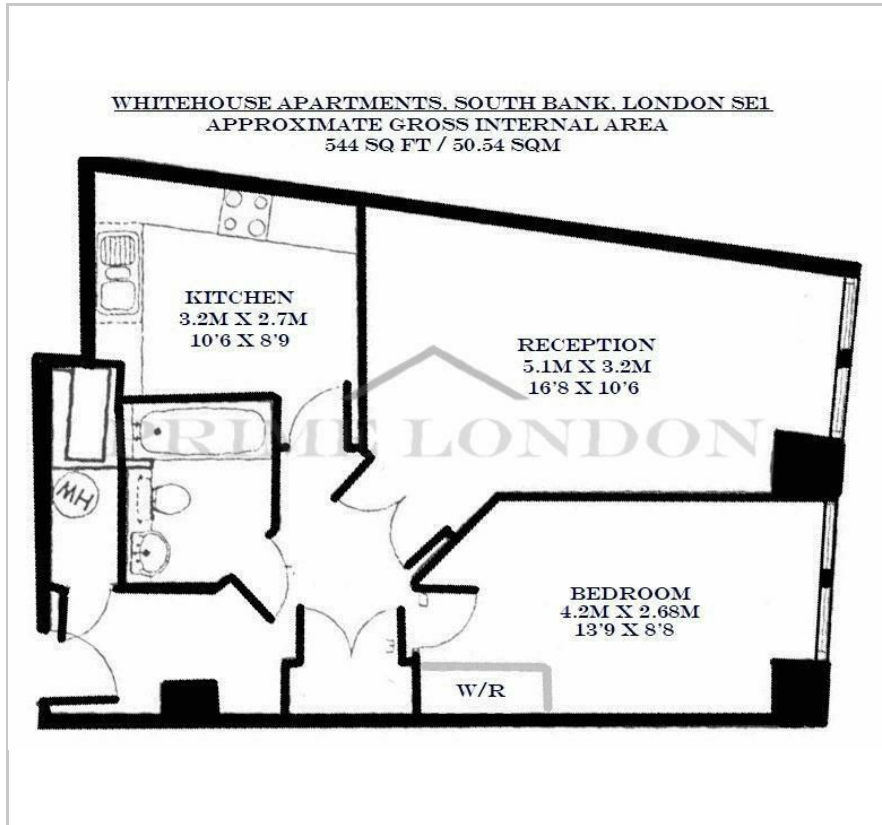
Whitehouse Apartments

9 Belvedere Road, South Bank, SE1 8YS

£475 Per Week



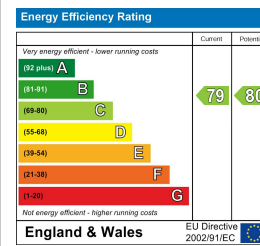
Floor Plan



Area Map



Energy Efficiency Graph



Viewing

By appointment. Contact us on 0207 928 6663 if you wish to arrange a viewing appointment for this property, or require further information.

- Garden facing apartment
- Fully equipped gymnasium
- 24 hour concierge service
- 544 sq ft
- Heated swimming pool, steam room and sauna
- Communal roof terrace



A sizeable and rarely available garden facing one bedroom apartment of 544 sq ft, in a sought after and quiet position, available on an unfurnished basis within this highly regarded development on the South Bank exclusively through Prime London.

The apartment offers a bright south-facing reception, large double bedroom with built-in storage, separate fully fitted kitchen and fully fitted bathroom.

Additionally, residents enjoy exclusive access to the spa and fitness centre complete with fully equipped gymnasium, heated swimming pool, steam room and sauna.

The Whitehouse Apartments further features a 24 hour concierge service and communal roof terrace. Positioned moments from the South Bank, the location offers an array of some of London's finest cultural attractions, restaurants, cafes and shops.

Nearby Waterloo station provides superb transport links via the Bakerloo, Jubilee, Northern and Waterloo & City lines.



These particulars, whilst believed to be accurate are set out as a general outline only for guidance and do not constitute any part of an offer or contract. Intending purchasers should not rely on them as statements of representation of fact, but must satisfy themselves by inspection or otherwise as to their accuracy. No person in this firm's employment has the authority to make or give any representation or warranty in respect of the property.