



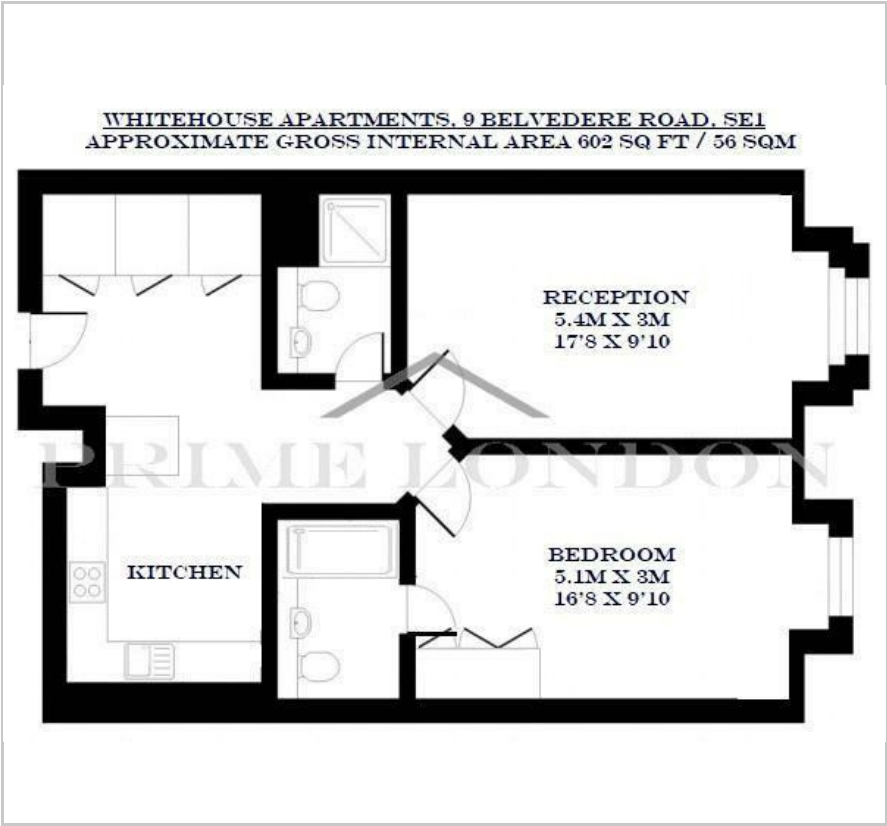
Whitehouse Apartments

9 Belvedere Road, South Bank, SE1 8YU

£495 Per Week



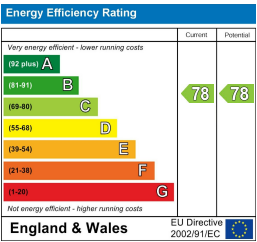
Floor Plan



Area Map



Energy Efficiency Graph



Viewing

By appointment. Contact us on 0207 928 6663 if you wish to arrange a viewing appointment for this property, or require further information.

- Over 600 sq ft
- Comfort cooling
- Superior on-site facilities
- Gymnasium, indoor heated swimming pool, spa
- Premium aspect
- Secure allocated parking
- 24 hour concierge
- Expansive rooftop terrace

Offering over 600 sq ft of living space and the best position in the building, this one bedroom apartment is available exclusively through Prime London within this iconic development on London's South Bank.

The property offers its premium aspect from all principal rooms, and further comprises an open-plan kitchen, comfort cooling, en suite shower room, further shower room and secure allocated parking.

Residents of the Whitehouse Apartments enjoy exclusive use of the superior on-site facilities, namely a well maintained courtyard garden, gymnasium, indoor heated swimming pool, spa and expansive rooftop terrace.

Within walking distance of the South Bank's many amenities as well as Waterloo and Westminster stations, the location provides direct transport links into the City and West End.



These particulars, whilst believed to be accurate are set out as a general outline only for guidance and do not constitute any part of an offer or contract. Intending purchasers should not rely on them as statements of representation of fact, but must satisfy themselves by inspection or otherwise as to their accuracy. No person in this firm's employment has the authority to make or give any representation or warranty in respect of the property.