

Anchor House

St George Wharf, SW8 2FH

£600 Per Week



2



2

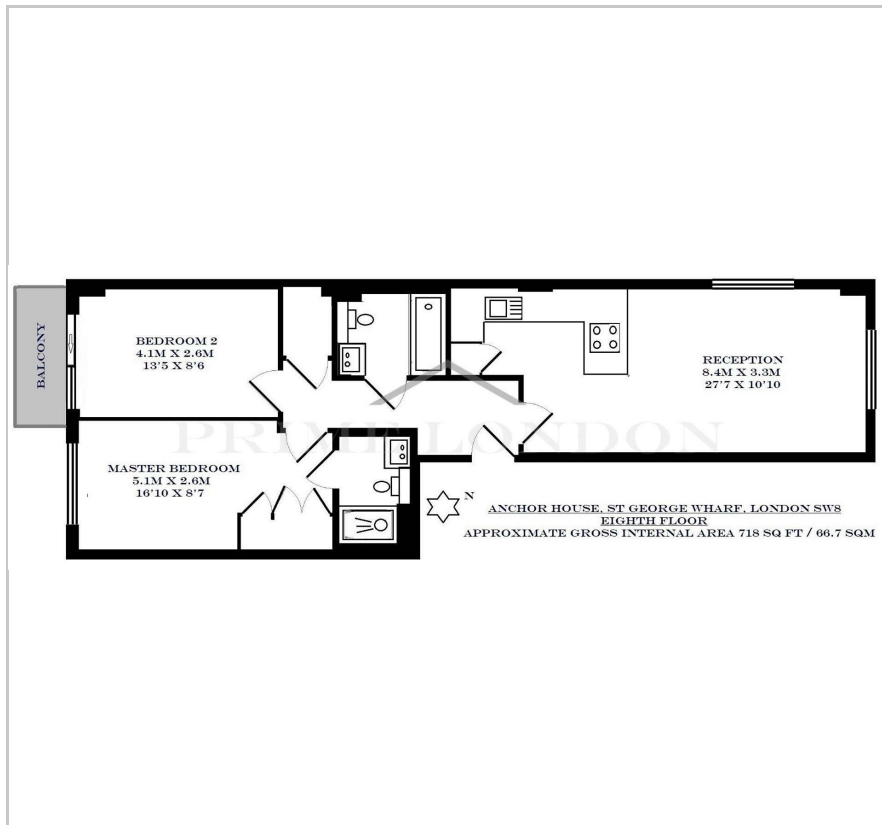


1

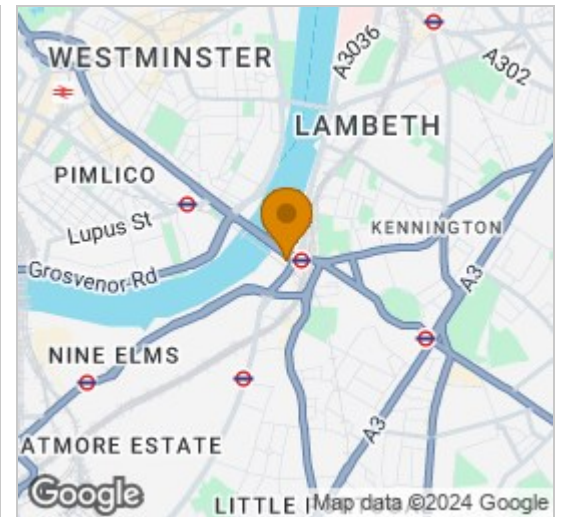


C

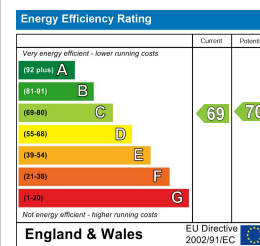
Floor Plan



Area Map



Energy Efficiency Graph



Viewing

By appointment. Contact us on 0207 928 6663 if you wish to arrange a viewing appointment for this property, or require further information.

- High specification
- Interior designed
- Triple aspect
- Views of the parliamentary bridges

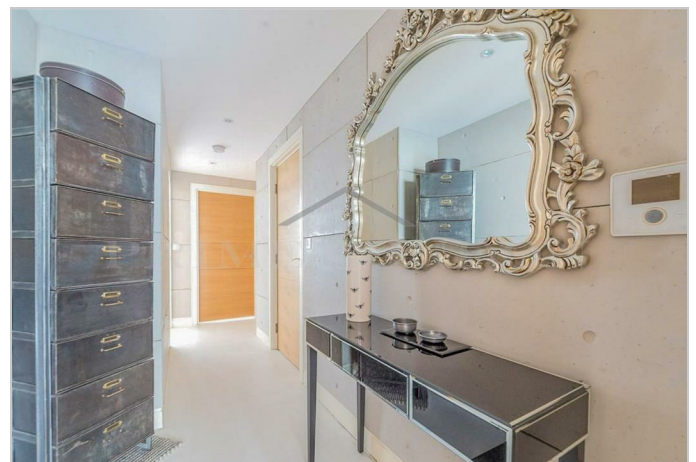


A high specification, interior designed triple aspect two bedroom apartment, with views of the parliamentary bridges leading to the Houses of Parliament and London Eye, located in this excellently located and well-served riverside development St George Wharf.

This apartment offers a generous dual aspect reception, two double bedrooms (master with en suite), open-plan kitchen and separate family bathroom.

This apartment benefits from the fantastic transport links afforded by this very well kept complex by The River Thames. St George Wharf offers on site riverside bars and restaurants such as Waterfront London, The Riverside, Four Degree and Pop Art Sushi as well as direct access to Vauxhall Underground Station on the Victoria Line.

For additional convenience other on site outlets include Tesco Express, Pret a Manger, Hudson's Dry Cleaners, Riverside Medical Centre & Dental Spa and more.



These particulars, whilst believed to be accurate are set out as a general outline only for guidance and do not constitute any part of an offer or contract. Intending purchasers should not rely on them as statements of representation of fact, but must satisfy themselves by inspection or otherwise as to their accuracy. No person in this firm's employment has the authority to make or give any representation or warranty in respect of the property.