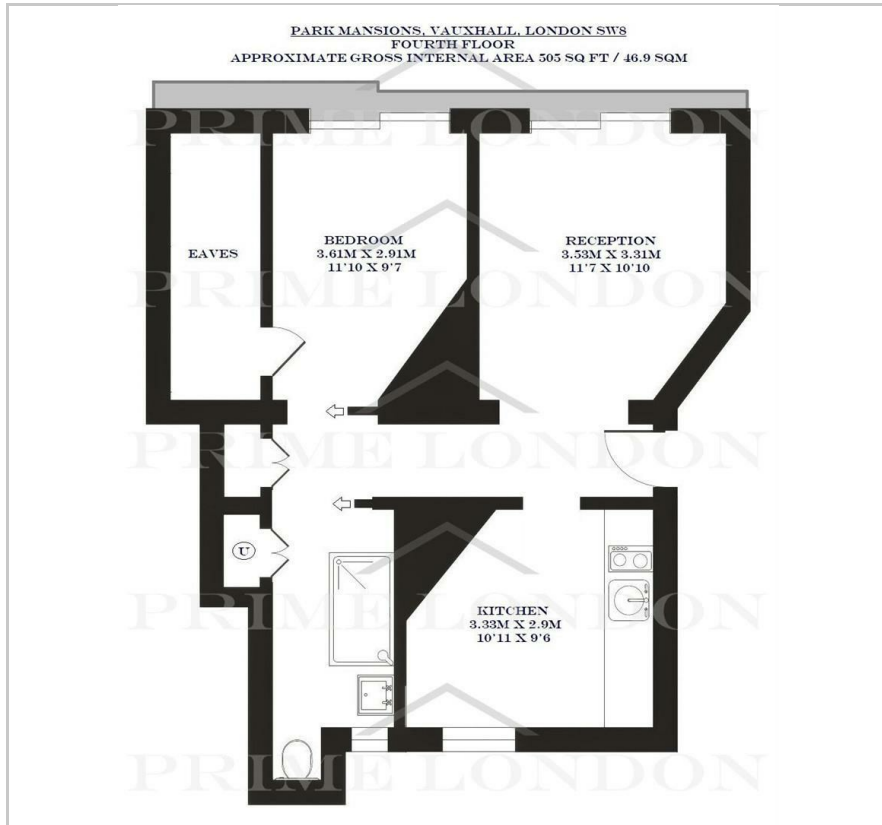




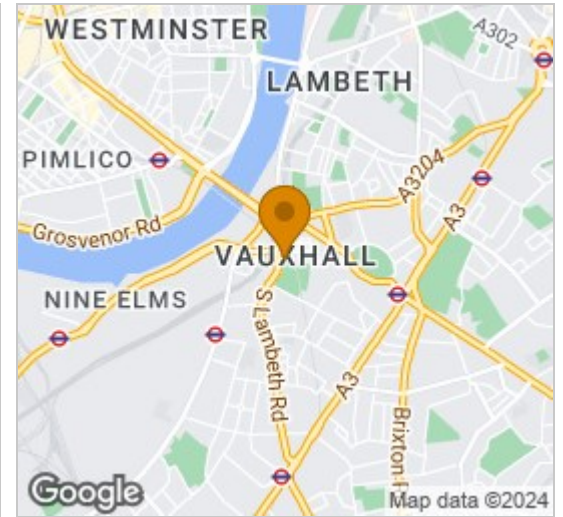
Park Mansions  
Vauxhall, SW8 1TP  
£450 Per Week



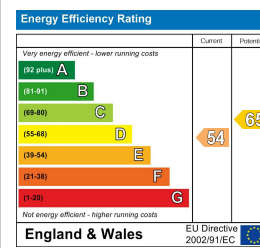
## Floor Plan



## Area Map



## Energy Efficiency Graph



## Viewing

By appointment. Contact us on 0207 928 6663 if you wish to arrange a viewing appointment for this property, or require further information.

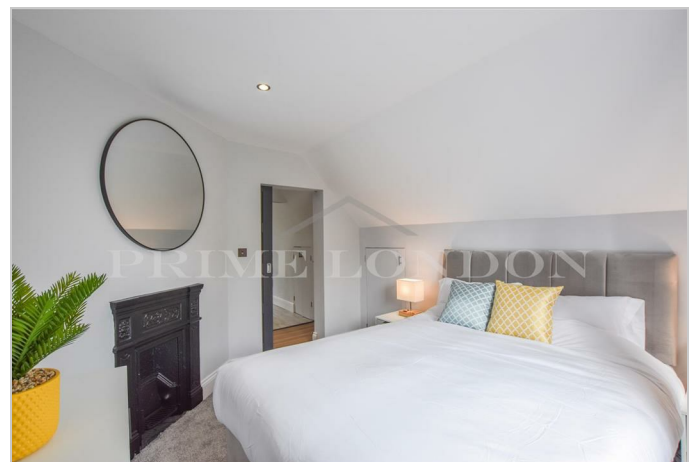
- 505 sq ft (46.9 sqm)
- Newly refurbished
- Interior designed
- Views over Vauxhall Park



A fourth floor apartment of 505 sq ft (46.9 sqm), newly refurbished, interior designed and with views over Vauxhall Park, available for immediate lease exclusively through Prime London.

Set within a beautiful period mansion building, this property comprises a generous reception with exterior access, modern kitchen with space for dining, double bedroom also with exterior access, and a modernised bathroom.

The building is located opposite Vauxhall Park, and within moments of Vauxhall Underground (Zone 1) and Overground. The plentiful amenities of Vauxhall's riverside and expanding commercial area are all within easy reach.



These particulars, whilst believed to be accurate are set out as a general outline only for guidance and do not constitute any part of an offer or contract. Intending purchasers should not rely on them as statements of representation of fact, but must satisfy themselves by inspection or otherwise as to their accuracy. No person in this firm's employment has the authority to make or give any representation or warranty in respect of the property.