

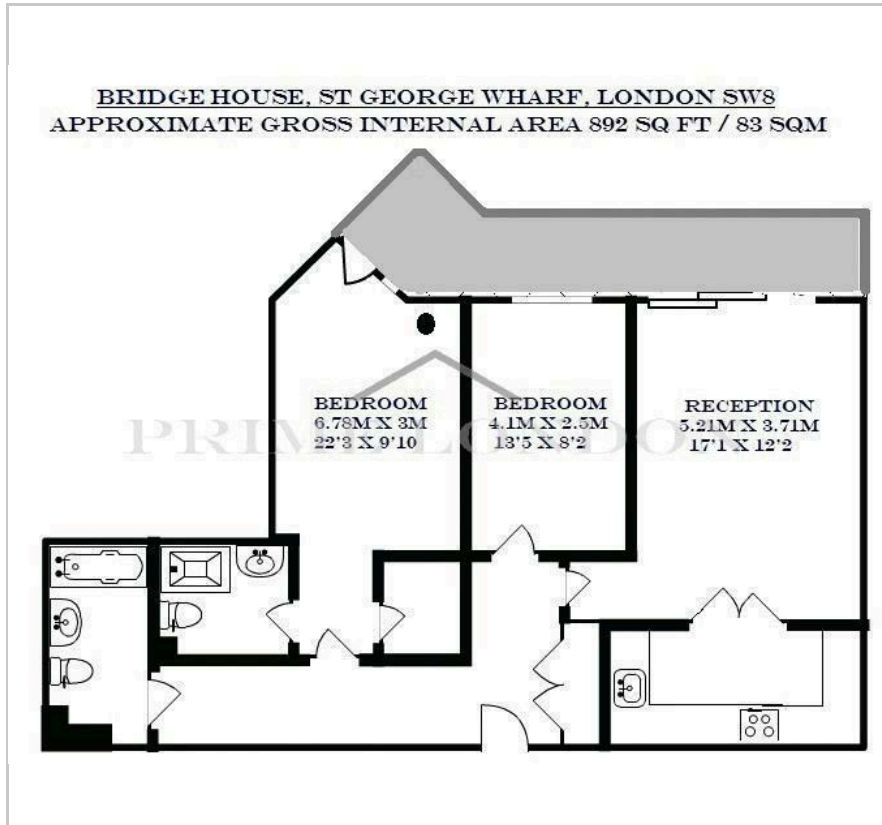
Bridge House

St George Wharf, SW8 2LQ

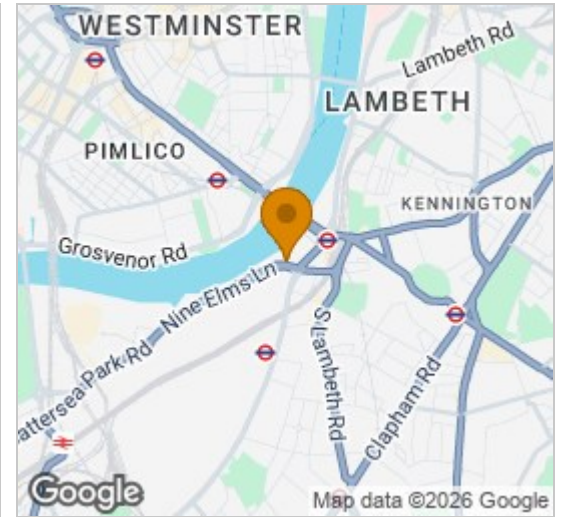
£670 Per Week



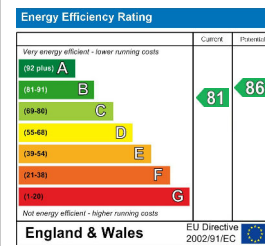
Floor Plan



Area Map



Energy Efficiency Graph



Viewing

By appointment. Contact us on 0207 928 6663 if you wish to arrange a viewing appointment for this property, or require further information.

- Two bed Two bath with Direct views of the River Thames
- 892 sq ft / 83 sq m Restaurants and Bars on site
- Excellent transport 24 hour concierge

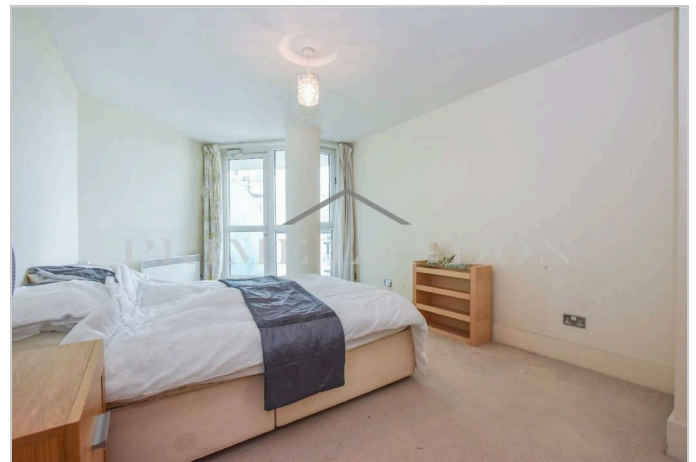


This larger than average two bedroom apartment comes fully furnished, and is available to lease in Bridge House, St George Wharf exclusively through Prime London.

Offering spectacular views of the River Thames (especially at sunset) and approximately 892 sq ft / 83 sq m of living space, the apartment comprises master bedroom with en suite bathroom and private balcony, second double bedroom, separate bathroom, open plan reception and dining area and modern fully fitted kitchen.

This apartment benefits from the fantastic transport links afforded by this very well kept complex by The River Thames. St George Wharf offers on site riverside bars and restaurants such as Waterfront London, The Riverside, Four Degree and Pop Art Sushi as well as direct access to Vauxhall Underground Station on the Victoria Line.

For additional convenience other on site outlets include Tesco Express, Pret a Manger, Hudson's Dry Cleaners, Riverside Medical Centre & Dental Spa and more.



These particulars, whilst believed to be accurate are set out as a general outline only for guidance and do not constitute any part of an offer or contract. Intending purchasers should not rely on them as statements of representation of fact, but must satisfy themselves by inspection or otherwise as to their accuracy. No person in this firm's employment has the authority to make or give any representation or warranty in respect of the property.