

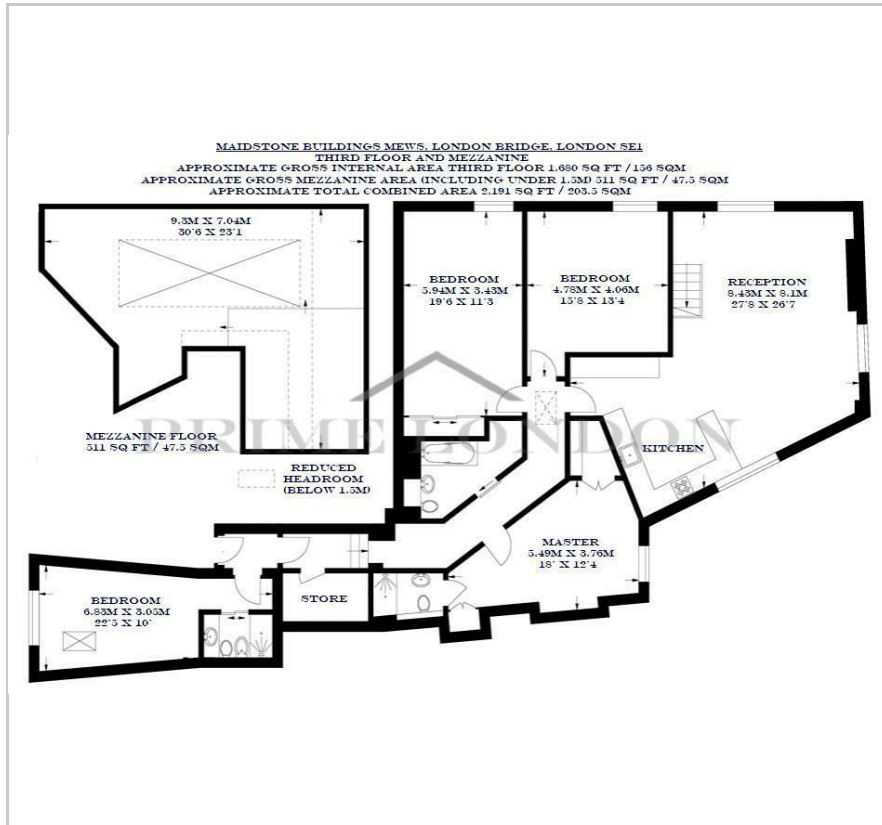
Devon House

1 Maidstone Buildings Mews, London Bridge, SE1 1GE

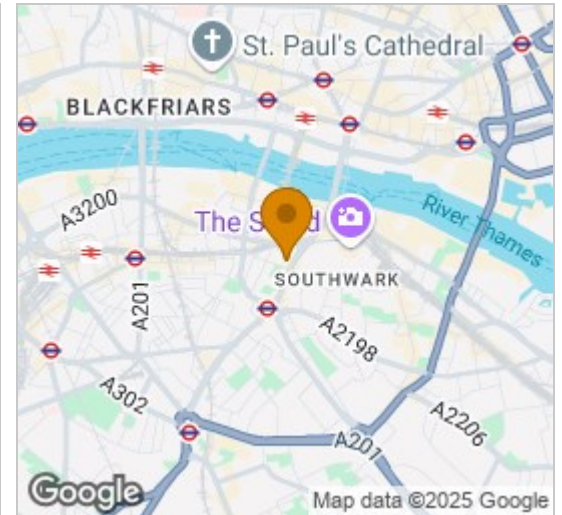
£1,400 Per Week



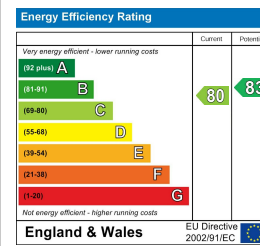
Floor Plan



Area Map



Energy Efficiency Graph



Viewing

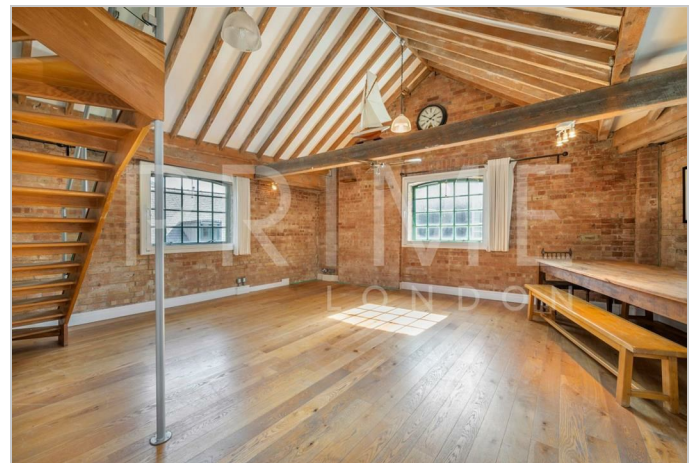
By appointment. Contact us on 0207 928 6663 if you wish to arrange a viewing appointment for this property, or require further information.

- Four bedroom warehouse ■ Totalling almost 2,200 sq ft conversion
- Substantial mezzanine ■ Exposed brickwork and original beams
- On site security ■ Excellent location

Available to rent and totalling almost 2,200 sq ft, this exceptional four bedroom warehouse conversion includes a substantial mezzanine, exposed brickwork, original beams and double-height reception, and is available for lease exclusively through Prime London.

The property comprises a dual-aspect reception with open plan kitchen, master suite with walk-in wardrobe and en suite, two further very large bedrooms, fourth bedroom with skylight and en suite, further family bathroom and store.

The development itself provides a quiet position in a busy location full of amenities, and offers on site security and Borough Market, London Bridge, The Shard and Hays Galleria are all within two minutes' walk.



These particulars, whilst believed to be accurate are set out as a general outline only for guidance and do not constitute any part of an offer or contract. Intending purchasers should not rely on them as statements of representation of fact, but must satisfy themselves by inspection or otherwise as to their accuracy. No person in this firm's employment has the authority to make or give any representation or warranty in respect of the property.