



## Ensign House

St George Wharf, SW8 2LU

£625 Per Week



2



2



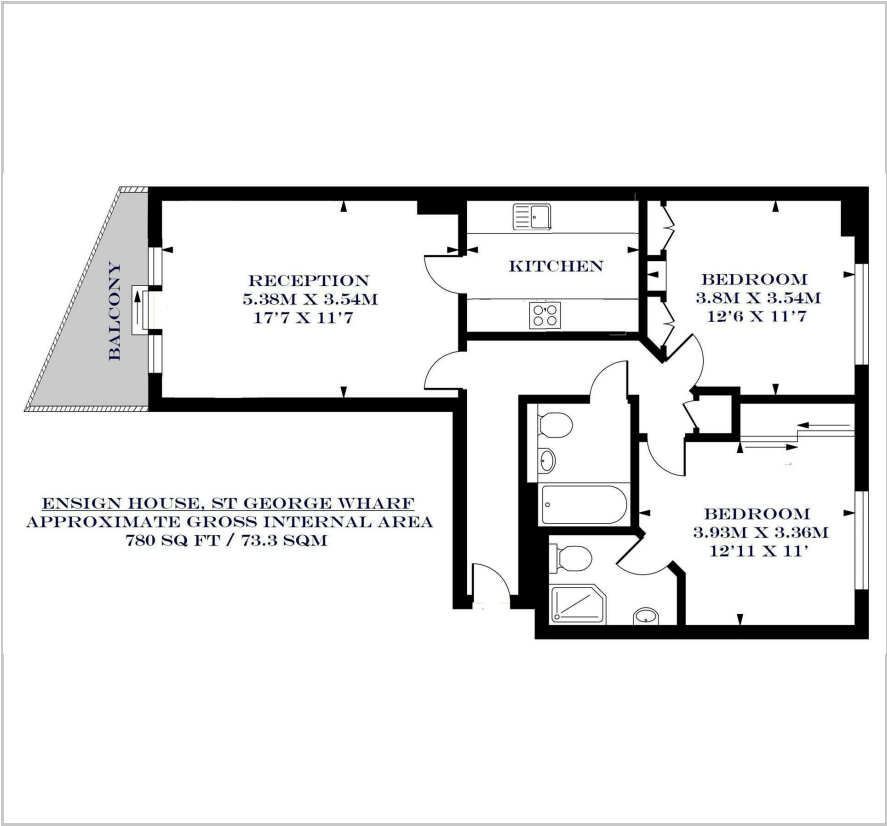
1



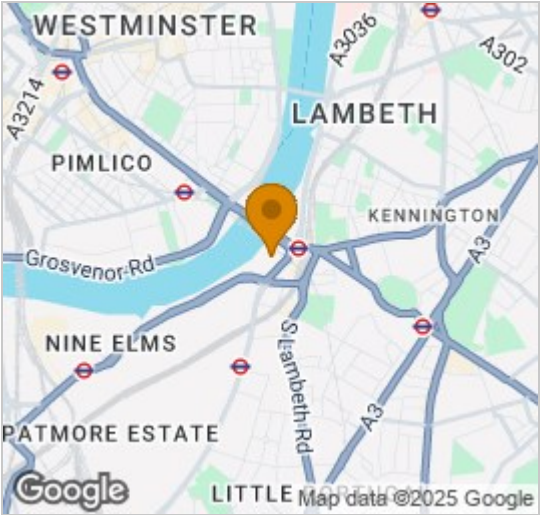
B



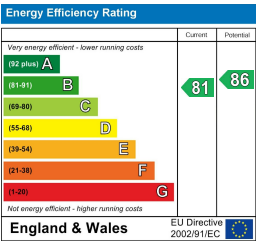
Floor Plan



Area Map



Energy Efficiency Graph



Viewing

By appointment. Contact us on 0207 928 6663 if you wish to arrange a viewing appointment for this property, or require further information.

- Beautifully furnished
- Two balconies, one with apartment River Views
- Fantastic transport links
- Riverside bars and restaurants



A beautifully furnished two bedroom two bathroom apartment with direct river views, available exclusively through Prime London in Ensign House, St. George Wharf.

The property comprises a large reception with balcony with river views, attached kitchen, two double bedrooms with integrated storage and two modern bathrooms, one of which is en-suite.

The property also benefits from a second, south facing balcony coming off both of the bedrooms. This apartment has fantastic transport links afforded by this very well kept complex by The River Thames.

St George Wharf offers on site riverside bars and restaurants such as Waterfront London, The Riverside, Four Degree and Pop Art Sushi as well as direct access to Vauxhall Underground Station on the Victoria Line.

For additional convenience other on site outlets include Tesco Express, Pret a Manger, Hudson's Dry Cleaners, Riverside Medical Centre & Dental Spa and more.



These particulars, whilst believed to be accurate are set out as a general outline only for guidance and do not constitute any part of an offer or contract. Intending purchasers should not rely on them as statements of representation of fact, but must satisfy themselves by inspection or otherwise as to their accuracy. No person in this firm's employment has the authority to make or give any representation or warranty in respect of the property.