

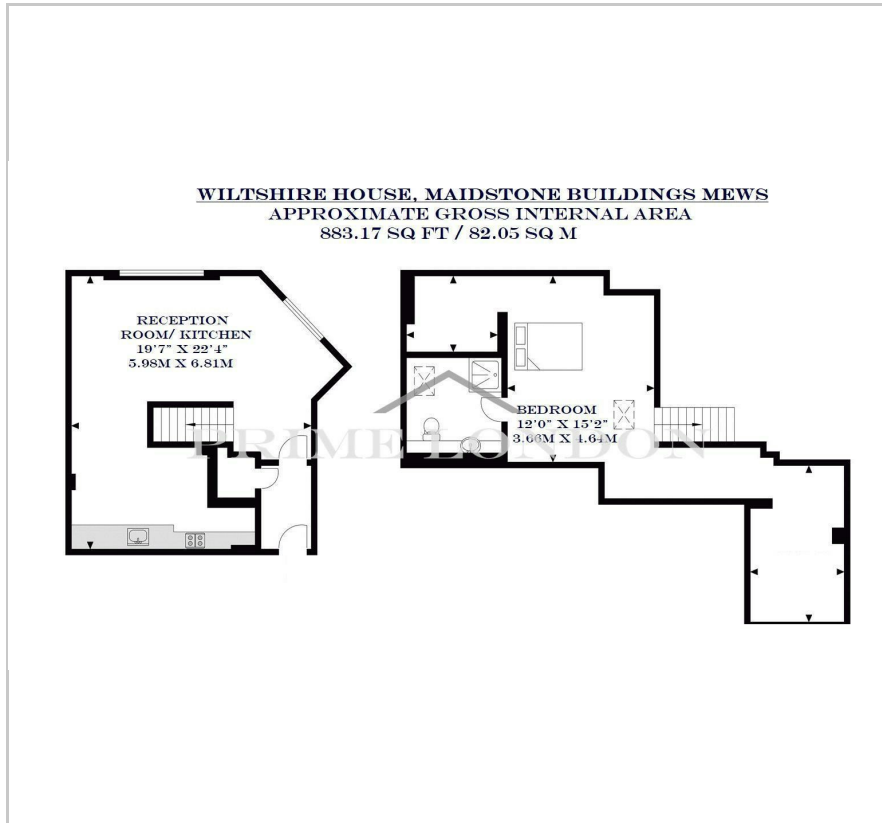
Wiltshire House

2 Maidstone Buildings Mews, London Bridge, SE1 1GH

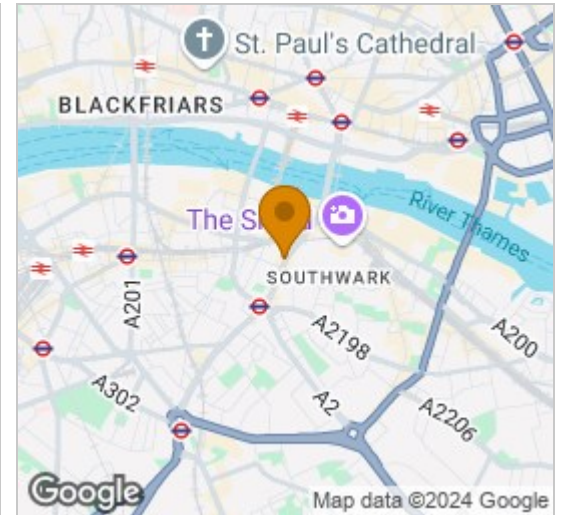
£615 Per Week



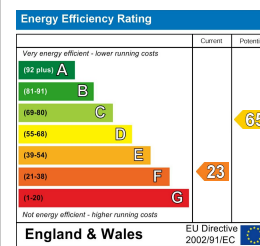
Floor Plan



Area Map



Energy Efficiency Graph



Viewing

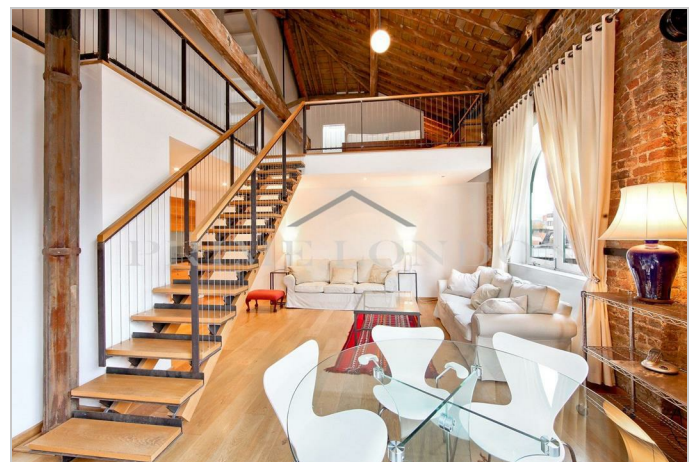
By appointment. Contact us on 0207 928 6663 if you wish to arrange a viewing appointment for this property, or require further information.

- Huge warehouse conversion
- 883.17 sq ft (82.05 sqm)
- Double-height reception
- Substantial mezzanine
- Exposed brickwork and original beams
- On site porter

This beautiful one bedroom with study warehouse conversion of 883.17 sq ft (82.05 sqm) includes a substantial mezzanine, exposed brickwork, original beams and double-height reception, and is available to rent through Prime London.

The fully furnished property comprises a dual-aspect reception with open plan kitchen, large mezzanine bedroom, separate study area, and family bathroom.

The development itself provides a quiet position in a busy location full of amenities, and offers on site security and Borough Market, London Bridge, The Shard and Hays Galleria are all within two minutes' walk.



These particulars, whilst believed to be accurate are set out as a general outline only for guidance and do not constitute any part of an offer or contract. Intending purchasers should not rely on them as statements of representation of fact, but must satisfy themselves by inspection or otherwise as to their accuracy. No person in this firm's employment has the authority to make or give any representation or warranty in respect of the property.