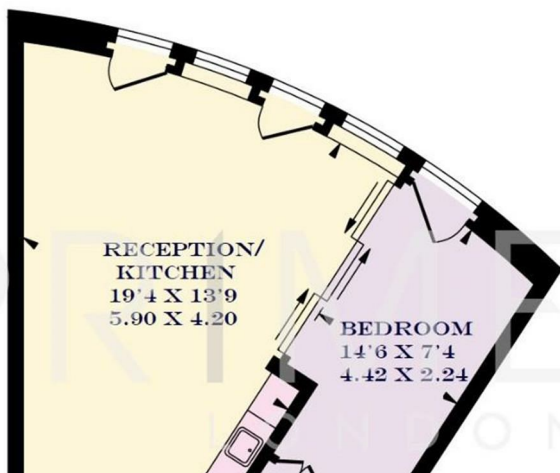




APPROXIMATE GROSS INTERNAL AREA  
496 SQ FT / 46.08



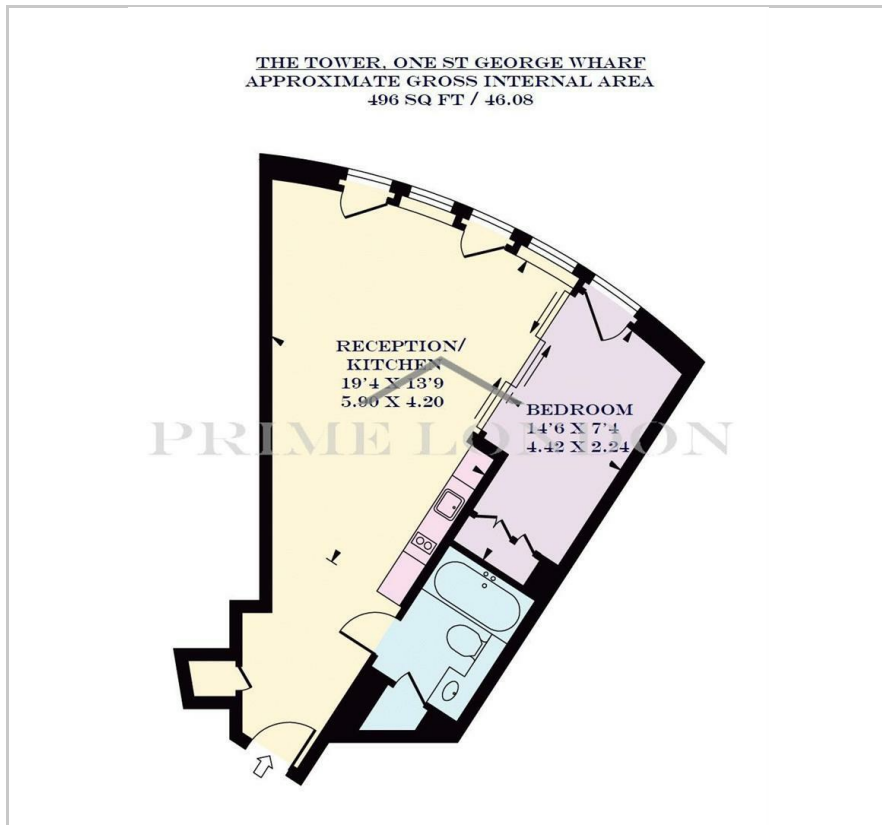
## The Tower

One St. George Wharf, SW8 2DA

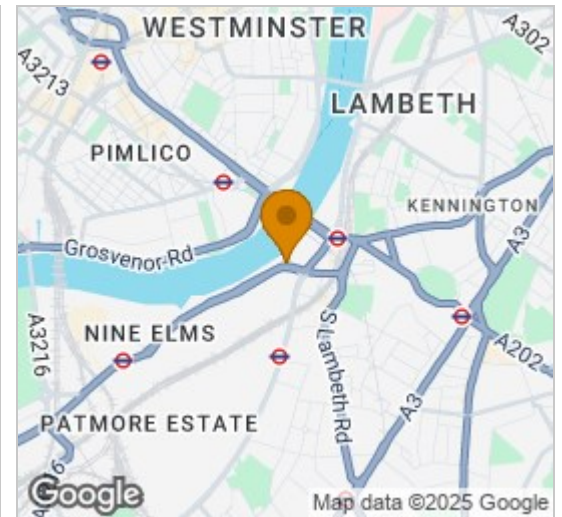
£675 Per Week



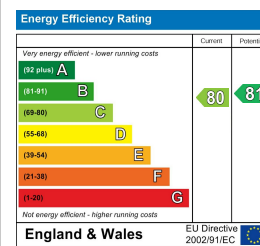
## Floor Plan



## Area Map



## Energy Efficiency Graph



## Viewing

By appointment. Contact us on 0207 928 6663 if you wish to arrange a viewing appointment for this property, or require further information.

- Ultra high-specification
- Valet parking inclusive
- Infinity swimming pool, sauna and steam room
- Fully furnished
- Private screening room
- 24 hour concierge

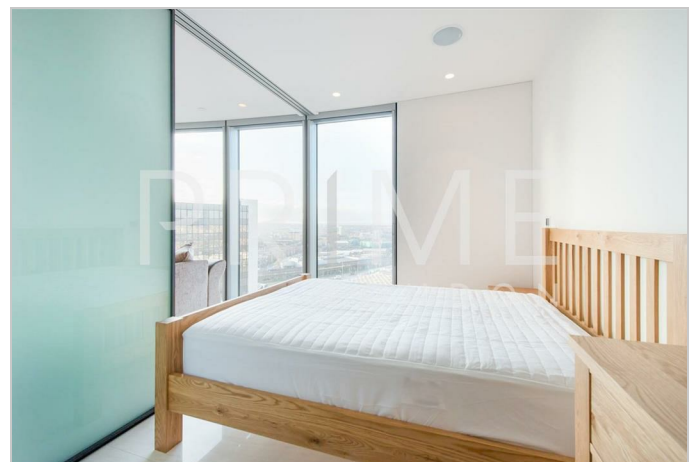


An exceptionally priced apartment to rent through Prime London in the ultra high-specification One St. George Wharf.

This building offers the highest details in design and style, whilst being located on the water's edge in the heart of central London.

All apartments have valet parking inclusive, and the building offers dedicated door service, 24 hour concierge, private health club with gym, infinity swimming pool, sauna and steam room.

Business facilities including a boardroom with conference facility are also available, along with a business lounge, private screening room and landscaped exterior gardens.



These particulars, whilst believed to be accurate are set out as a general outline only for guidance and do not constitute any part of an offer or contract. Intending purchasers should not rely on them as statements of representation of fact, but must satisfy themselves by inspection or otherwise as to their accuracy. No person in this firm's employment has the authority to make or give any representation or warranty in respect of the property.