



55 Ebury Street

Belgravia, London, SW1W 0PA

£980 Per Week



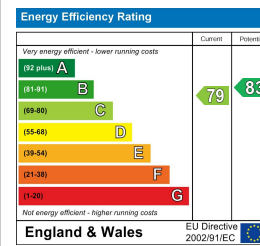
## Floor Plan



## Area Map



## Energy Efficiency Graph



## Viewing

By appointment. Contact us on 0207 052 1075 if you wish to arrange a viewing appointment for this property, or require further information.

- Two bedroom apartment
- 1,067 sq ft (99.1 sqm)
- Large reception area and separate kitchen
- Built-in wardrobes
- Close proximity to Victoria and Sloane Square stations
- 24 hour concierge

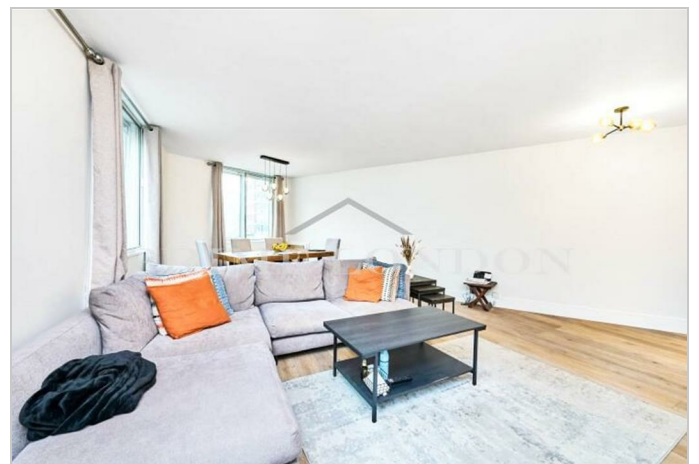
This contemporary two bedroom apartment, located in 55 Ebury Street and in the heart of Belgravia, is available for lease through Prime London.

Totalling 1,067 sq ft (99.1 sqm), this property comprises a spacious reception area, a well-proportioned separate kitchen, two double bedrooms with built-in wardrobes, and two bathrooms (one of which is an en-suite).

Conveniently situated, 55 Ebury Street is just a stone's throw away from the amenities of Eccleston Street and Elizabeth Street, offering a variety of local eateries, trendy cafes, and bars. Eccleston Yards is also nearby.

Residents of 55 Ebury Street also benefit from a 24 hour concierge.

Transport links are easily accessible, with Victoria station providing services such as the Gatwick Express, underground, and buses. Sloane Square tube station (District and Circle lines) is also within walking distance.



These particulars, whilst believed to be accurate are set out as a general outline only for guidance and do not constitute any part of an offer or contract. Intending purchasers should not rely on them as statements of representation of fact, but must satisfy themselves by inspection or otherwise as to their accuracy. No person in this firm's employment has the authority to make or give any representation or warranty in respect of the property.