

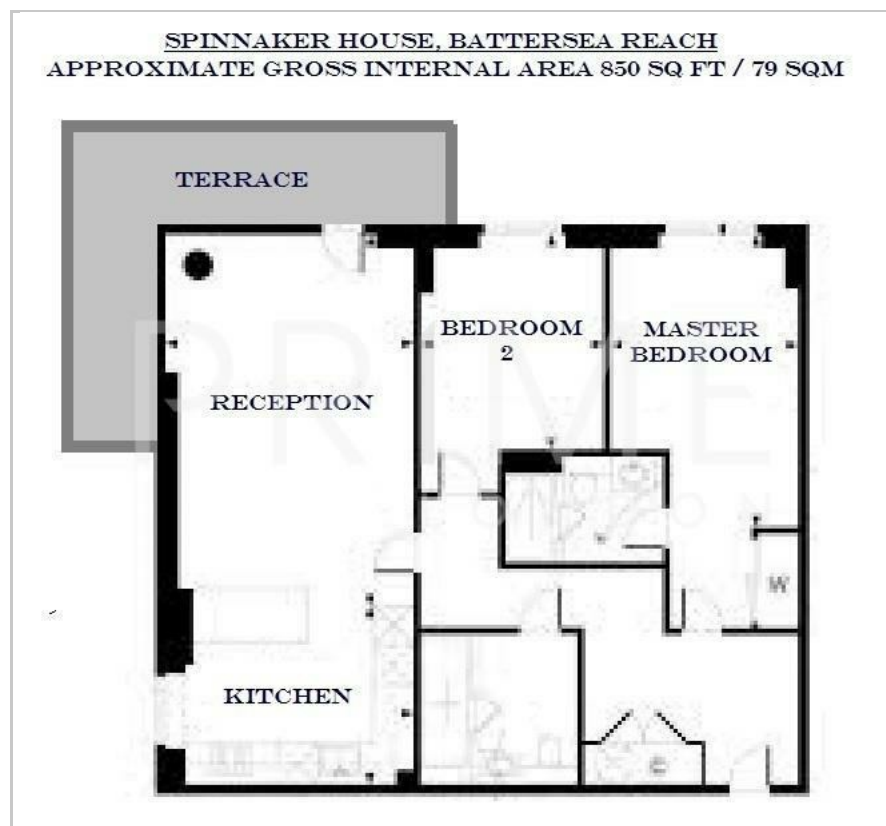
Spinnaker House

Juniper Drive, Battersea Reach, SW18 1FS

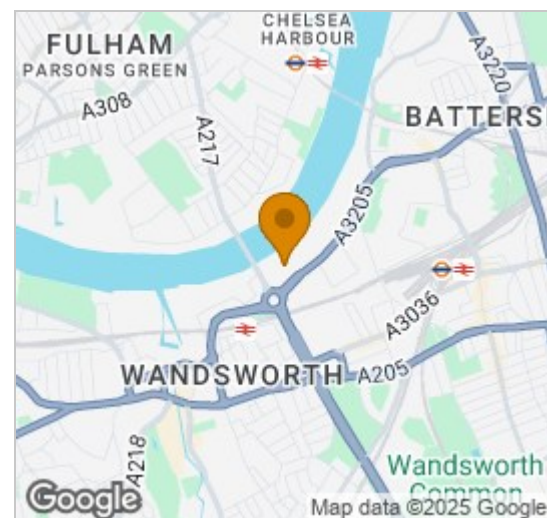
£611 Per Week



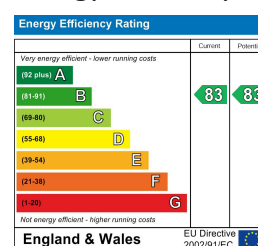
Floor Plan



Area Map



Energy Efficiency Graph



Viewing

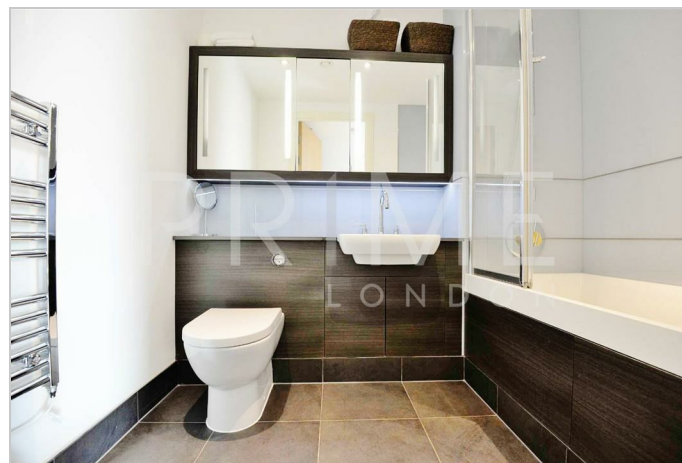
By appointment. Contact us on 0207 928 6663 if you wish to arrange a viewing appointment for this property, or require further information.

- 850 sq ft
- Secure parking
- Restaurants and bars
- Dual aspect
- 24 hour concierge service
- Residents' only fitness suite

A dual aspect high specification river view apartment of 850 sq ft, with secure parking, available for lease exclusively through Prime London.

This apartment features luxurious interior finishes, an excellent reception perfect for entertaining, two double bedrooms (master with en suite), generous private balcony, high specification kitchen (with serving area/breakfast bar), plentiful storage and secure underground parking space.

Battersea Reach itself provides many on-site amenities, including restaurants and bars, a residents only fitness suite, convenience shopping and a 24 hour concierge service.



These particulars, whilst believed to be accurate are set out as a general outline only for guidance and do not constitute any part of an offer or contract. Intending purchasers should not rely on them as statements of representation of fact, but must satisfy themselves by inspection or otherwise as to their accuracy. No person in this firm's employment has the authority to make or give any representation or warranty in respect of the property.

Palace View, 131 Lambeth Road, London SE1 7BT | 21 Grosvenor Gardens, Belgravia, London SW1W 0BP

Tel: 0207 928 6663 | 0207 052 1075 Email: Office@PrimeLondonResidential.com www.PrimeLondonResidential.com